

LOC/DME I-UQU 111.75 Chan 54 (Y)	APP CRS 021°	Rwy Idg TDZE Apt Elev	8000 590 599
--	------------------------	-----------------------------	---

ILS or LOC RWY 2R

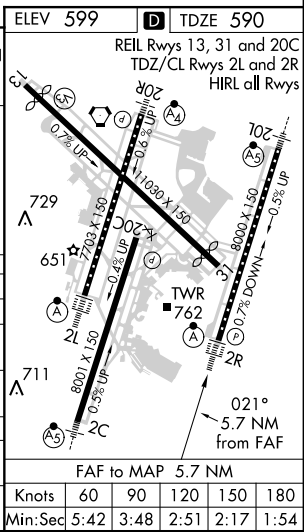
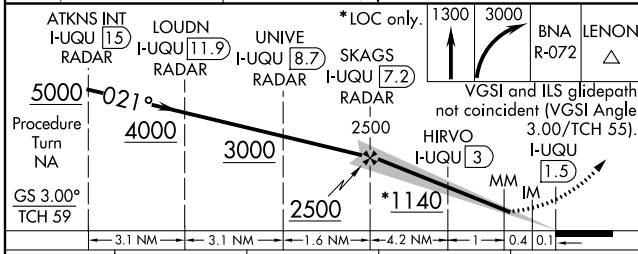
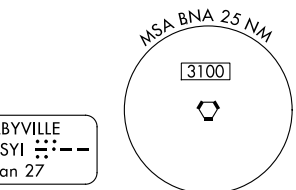
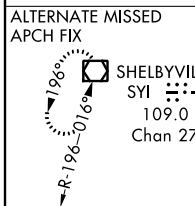
NASHVILLE INTL (BNA)

Simultaneous approach authorized with Rwy 2C or 2L.
DME or radar required.

MISSED APPROACH: Climb to 1300 then climbing right turn to 3000 via BNA R-072 to LENON INT/BNA 25.1 DME and hold.

ATIS 135.1	NASHVILLE APP CON 200°-018° 120.6 372.0 019°-199° 127.175 360.7	NASHVILLE TOWER 118.6 257.8	GND CON 121.9 348.6	CLNC DEL 126.05
----------------------	---	---------------------------------------	-------------------------------	---------------------------

DME or RADAR REQUIRED



CATEGORY	A	B	C	D
S-ILS 2R	790/18 200 (200-½)			
S-LOC 2R	1140/24 550 (600-½)		1140/50 550 (600-1)	1140/60 550 (600-1½)
CIRCLING	1140-1 541 (600-1)		1140-1½ 541 (600-1½)	1160-2 561 (600-2)
HIRVO FIX MINIMUMS				
S-LOC 2R	1080/24 490 (500-½)		1080/40 490 (500-¾)	1080/50 490 (500-1)
CIRCLING	1100-1 501 (600-1)		1120-1½ 521 (600-1½)	1160-2 561 (600-2)

SE-1, 07 FEB 2013 to 07 MAR 2013

SE-1, 07 FEB 2013 to 07 MAR 2013

ELEV 599	TDZE 590
REIL Rwy's 13, 31 and 20C TDZ/CL Rwy's 2L and 2R HIRL all Rwy's	
FAF to MAP 5.7 NM	
Knots	60 90 120 150 180
Min:Sec	5:42 3:48 2:51 2:17 1:54