


LOC I-EZN 110.75	APP CRS 021°	Rwy Idg TDZE Apt Elev 8000 587 599
----------------------------	------------------------	--

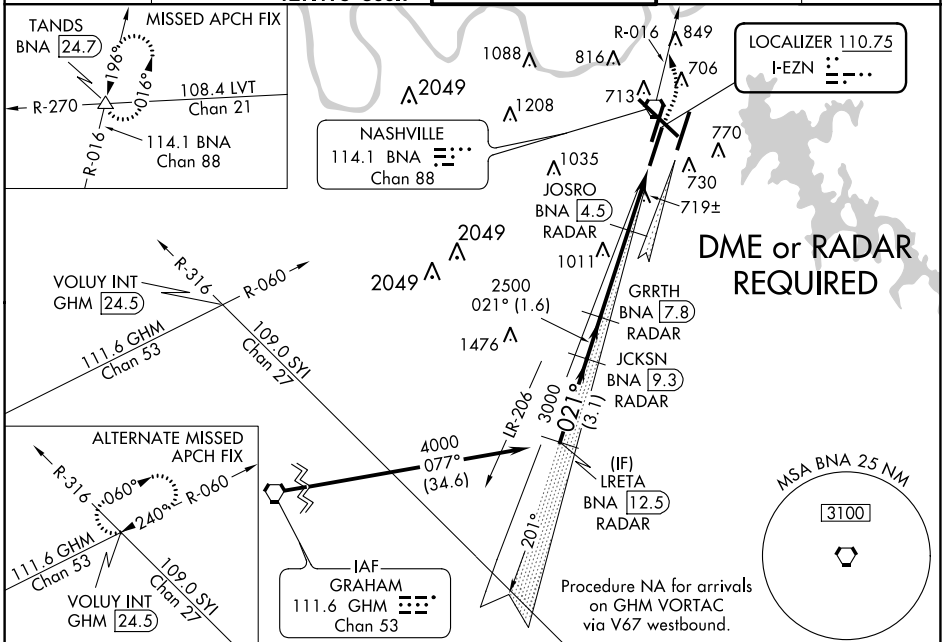
ILS or LOC RWY 2C

NASHVILLE INTL (BNA)

▼ For inoperative MALSRR, increase S-LOC 2C Cat A visibility to RVR 5000.
▲ Simultaneous approach authorized with ILS or LOC Rwy 2R, ILS Rwy 2R (Cat II), ILS Rwy 2R (Cat III). DME or radar required.
 ** RVR 1800 authorized with the use of FD or AP or HUD to DA.

MALSRR  MISSED APPROACH: Climb to 1300 then climbing left turn to 3000 via BNA VORTAC R-016 to TANDS INT/BNA 24.7 DME and hold.

ATIS 135.1	NASHVILLE APP CON 200°-018° 120.6 372.0 019°-199° 127.175 360.7	NASHVILLE TOWER 118.6 257.8	GND CON 121.9 348.6	CLNC DEL 126.05
----------------------	---	--	--------------------------------------	---------------------------

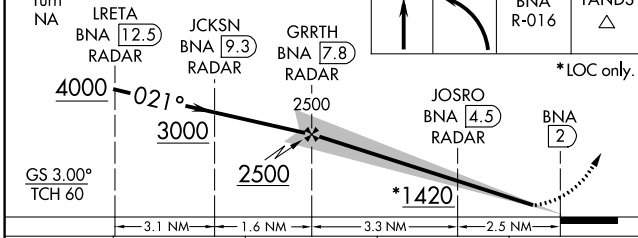


SE-1, 07 FEB 2013 to 07 MAR 2013

SE-1, 07 FEB 2013 to 07 MAR 2013

Procedure Turn VGSI and ILS glidepath not coincident.

ELEV 599	TDZE 587
----------	----------



CATEGORY	A	B	C	D
S-ILS 2C	**787/24 200 (200-½)			
S-LOC 2C	1420/40	833 (900-¾)	1420-2	1420-2¼
CIRCLING	1420-1	1420-1¼	1420-2½	1420-2¾
	821 (900-1)	821 (900-1¼)	821 (900-2½)	821 (900-2¾)
JOSRO FIX MINIMUMS				
S-LOC 2C	980/24 393 (400-½)		980/40 393 (400-¾)	
CIRCLING	1100-1 501 (600-1)		1120-1½ 521 (600-1½)	
			1160-2 561 (600-2)	

