

LOC I-VII 111.3	APP CRS 201°	Rwy Idg 20R 20C	TDZE 7702 8000 578 588
		Apt Elev	599 599

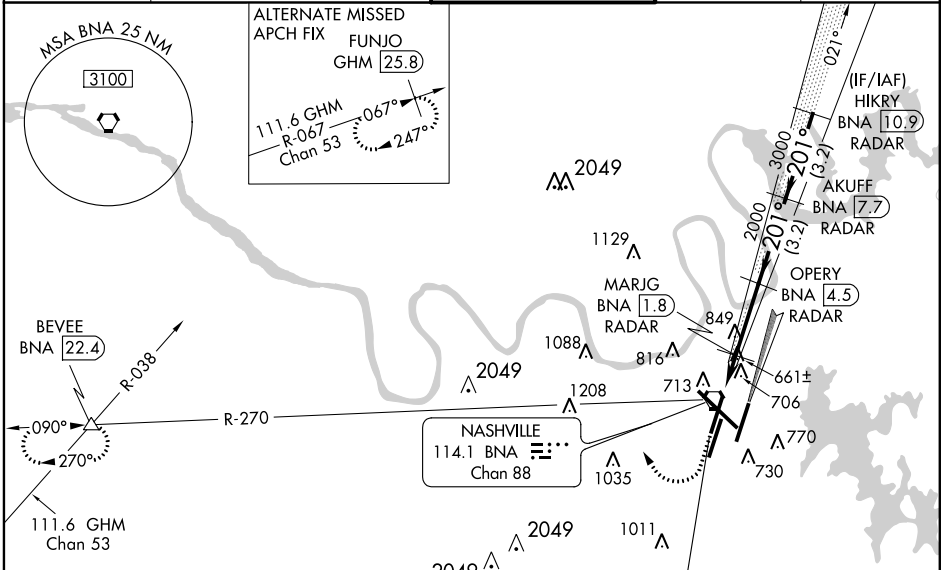
ILS or LOC RWY 20R

NASHVILLE INTL (BNA)

Simultaneous approach authorized with Rwy 20L. DME or radar required.

MALSF  MISSED APPROACH: Climb to 1200 then climbing right turn to 4000 via heading 300° and BNA VORTAC R-270 to BEVEE INT/BNA VORTAC 22.4 DME and hold.

ATIS 135.1	NASHVILLE APP CON 200°-018° 120.6 372.0 019°-199° 127.175 360.7	NASHVILLE TOWER 118.6 257.8	GND CON 121.9 348.6	CLNC DEL 126.05
----------------------	---	---------------------------------------	-------------------------------	---------------------------

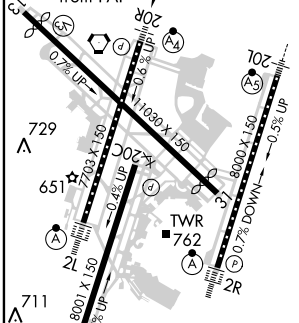


SE-1, 07 FEB 2013 to 07 MAR 2013

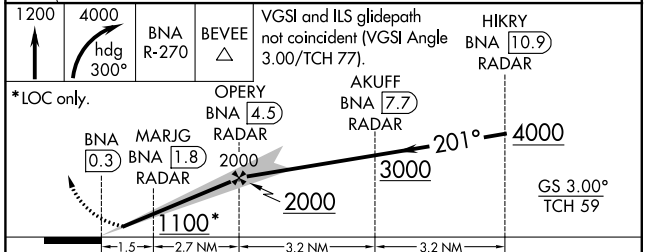
SE-1, 07 FEB 2013 to 07 MAR 2013

RADAR REQUIRED

ELEV 599	TDZE 20C 588
201° 4.3 NM from FAF	TDZE 20R 578



FAF to MAP 4.3 NM					
Knots	60	90	120	150	180
Min:Sec	4:18	2:52	2:09	1:43	1:26



CATEGORY	A	B	C	D
S-ILS 20R	778/40 200 (200-¾)			
S-LOC 20R	920/40	342 (400-¾)	920/60 342 (400-1¼)	
SIDESTEP 20C	960-1	372 (400-1)	960-1½ 372 (400-1½)	960-2 372 (400-2)
CIRCLING	1100-1 501 (600-1)		1120-1½ 521 (600-1½)	1160-2 561 (600-2)