

LOC/DME I-UQU 111.75 Chan 54 (Y)	APP CRS 021°	Rwy Idg TDZE Apt Elev	8000 590 599
--	------------------------	-----------------------------	---

ILS RWY 2R (CAT II)

NASHVILLE INTL (BNA)

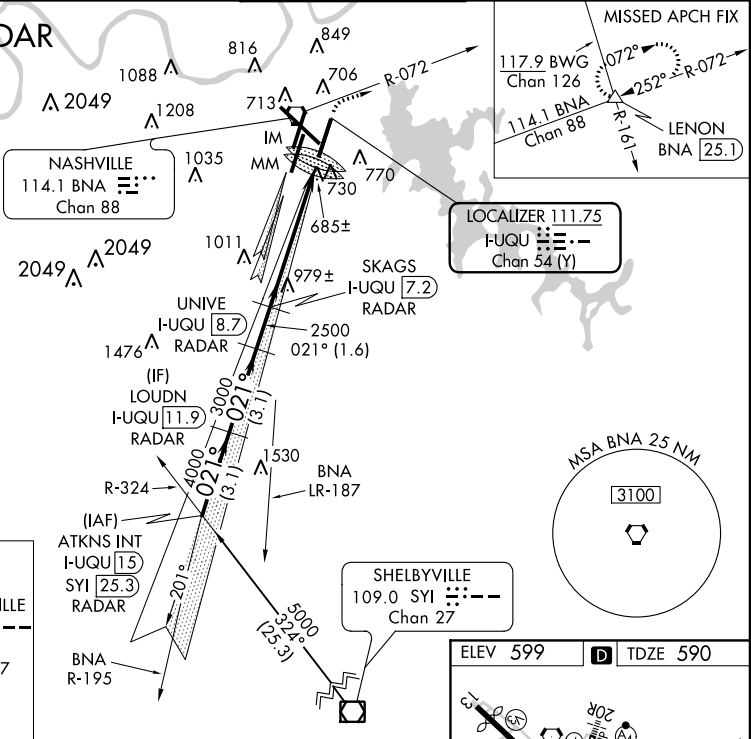
Simultaneous approach authorized with Rwy 2C or 2L. DME or radar required.

ALSIF-2

MISSED APPROACH: Climb to 1300 then climbing right turn to 3000 via BNA R-072 to LENON INT/BNA 25.1 DME and hold.

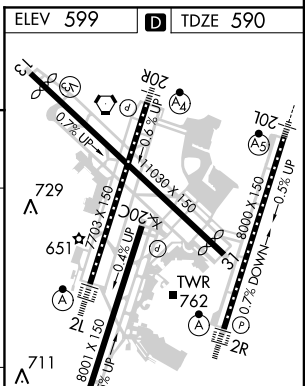
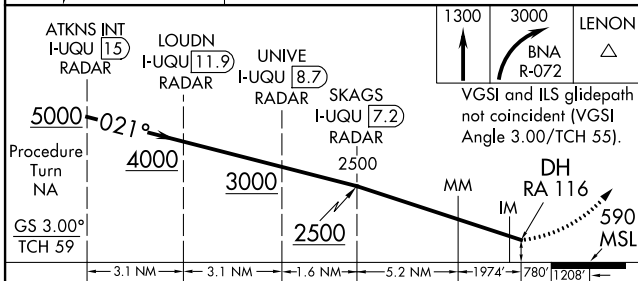
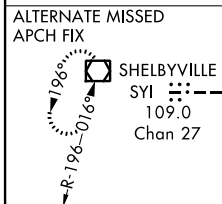
ATIS 135.1	NASHVILLE APP CON 200°-018° 120.6 372.0 019°-199° 127.175 360.7	NASHVILLE TOWER 118.6 257.8	GND CON 121.9 348.6	CLNC DEL 126.05
----------------------	---	---------------------------------------	-------------------------------	---------------------------

DME or RADAR REQUIRED



SE-1, 07 FEB 2013 to 07 MAR 2013

SE-1, 07 FEB 2013 to 07 MAR 2013



CATEGORY	A	B	C	D
S-ILS 2R	RA 116/12 100 DA 690			

CATEGORY II ILS - SPECIAL AIRCREW & AIRCRAFT CERTIFICATION REQUIRED

HIRL all Rwys
TDZ/CL Rwys 2L and 2R
REIL Rwys 13, 31 and 20C