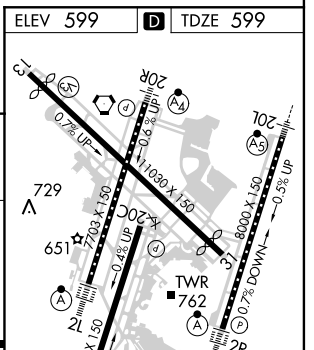
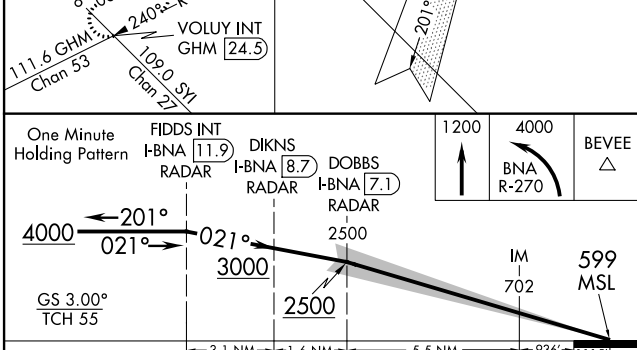
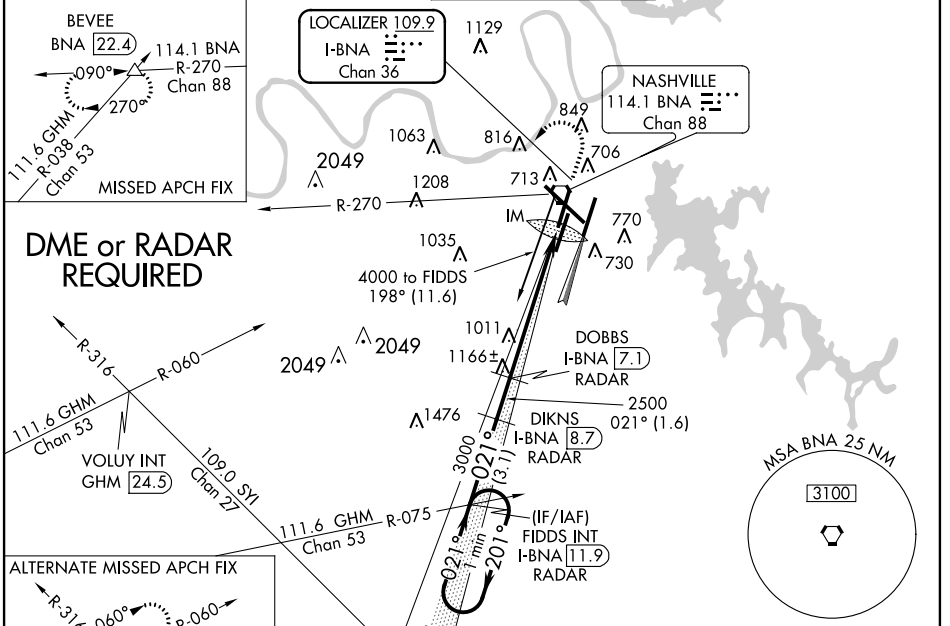


| | | | |
|--|------------------------|-----------------------------|---|
| LOC/DME I-BNA 109.9 Chan 36 | APP CRS 021° | Rwy Idg TDZE Apt Elev | 7702 599 599 |
|--|------------------------|-----------------------------|---|

ILS RWY 2L (CAT III)

NASHVILLE INTL (BNA)

| | | | | |
|---|--|---|--|-----------------------------------|
| <p>Simultaneous approach authorized with Rwy 2R. DME or RADAR REQUIRED.</p> | | <p>ALSF-2</p> | <p>MISSED APPROACH: Climb to 1200 then climbing left turn to 4000 via BNA VORTAC R-270 to BEVEE INT/BNA 22.4 DME and hold.</p> | |
| <p>ATIS 135.1</p> | <p>NASHVILLE APP CON 200°-018° 120.6 372.0 019°-199° 127.175 360.7</p> | <p>NASHVILLE TOWER 118.6 257.8</p> | <p>GND CON 121.9 348.6</p> | <p>CLNC DEL 126.05</p> |



| CATEGORY | A | B | C | D |
|----------|---|----------|--------|---|
| S-ILS 2L | | CAT IIIa | RVR 07 | |
| S-ILS 2L | | CAT IIIb | RVR 06 | |
| S-ILS 2L | | CAT IIIc | NA | |

CATEGORY III ILS - SPECIAL AIRCREW & AIRCRAFT CERTIFICATION REQUIRED

HIRL all Rwys
TDZ/CL Rwys 2L and 2R
REIL Rwys 13, 31 and 20C

SE-1, 07 FEB 2013 to 07 MAR 2013

SE-1, 07 FEB 2013 to 07 MAR 2013