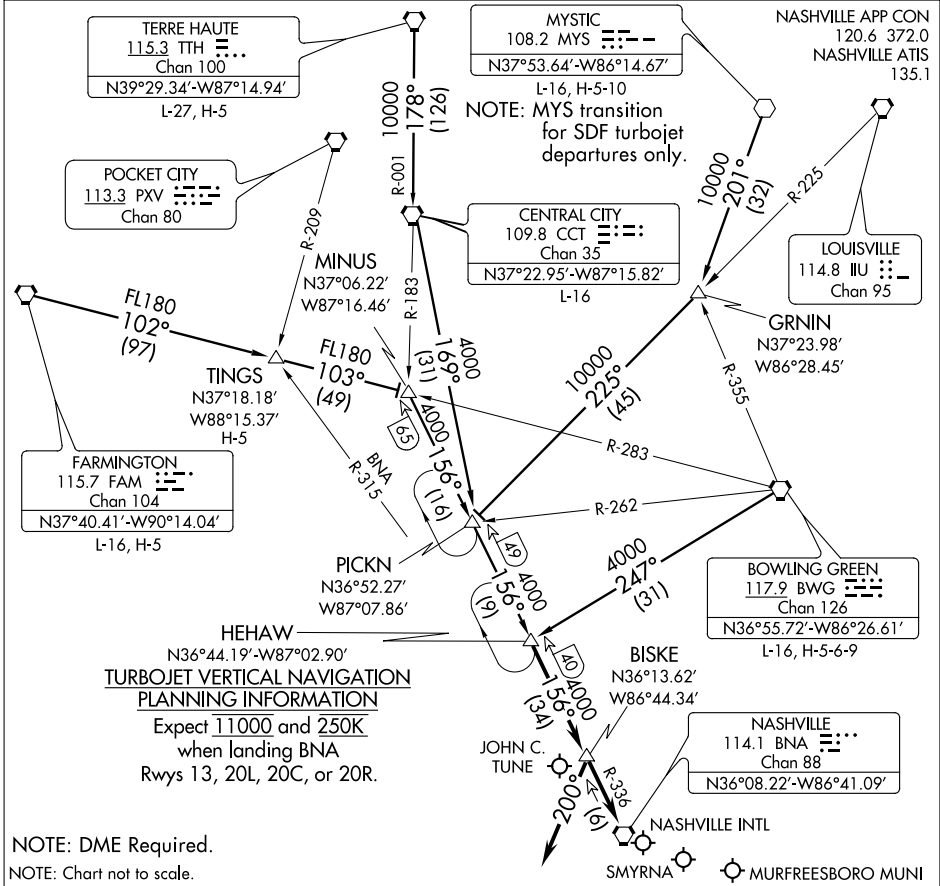


HEHAW FIVE ARRIVAL

NASHVILLE, TENNESSEE



SE-1, 07 FEB 2013 to 07 MAR 2013

SE-1, 07 FEB 2013 to 07 MAR 2013

NOTE: DME Required.
NOTE: Chart not to scale.

BOWLING GREEN TRANSITION (BWG.HEHAW5): From over BWG VORTAC via BWG R-247 to HEHAW INT. Thence. . .

CENTRAL CITY TRANSITION (CCT.HEHAW5): From over CCT VORTAC via CCT R-169 to PICKN INT, then via BNA R-336 to HEHAW INT. Thence. . .

FARMINGTON TRANSITION (FAM.HEHAW5): From over FAM VORTAC via FAM R-102 and BWG R-283 to MINUS INT, then via BNA R-336 to HEHAW INT. Thence. . .

MYSTIC TRANSITION (MYS.HEHAW5): From over MYS VOR via MYS R-201 to GRNIN INT, then via IU R-225 to PICKN INT, then via BNA R-336 to HEHAW INT. Thence. . .

TERRE HAUTE TRANSITION (TTH.HEHAW5): From over TTH VORTAC via TTH R-178 and CCT R-001 to CCT VORTAC, then via CCT R-169 to PICKN INT, then via BNA R-336 to HEHAW INT. Thence. . .

TINGS TRANSITION (TINGS.HEHAW5): From over TINGS INT via BWG R-283 to MINUS INT, then via BNA R-336 to HEHAW INT. Thence. . .

. . . TURBOJETS/TURBOPROPS; LANDING NORTH: From over HEHAW INT via BNA R-336 to BISKE. Thence heading 200° for vectors to final approach course. LANDING SOUTH: From over HEHAW INT via BNA R-336 to BNA VORTAC. Expect vectors to final approach course.

NON-TURBINE; ALL RUNWAYS: From over HEHAW INT via BNA R-336 to BNA VORTAC. Expect vectors to final approach course passing HEHAW INT.

HEHAW FIVE ARRIVAL

NASHVILLE, TENNESSEE