

GRAHAM FIVE ARRIVAL

NASHVILLE, TENNESSEE

NASHVILLE APP CON
120.6 372.0
NASHVILLE ATIS
135.1

GHM VORTAC TURBOJET VERTICAL NAVIGATION PLANNING INFORMATION

Expect 11000 and 250K
when landing BNA Rws 2L, 2C, 2R or 13.

NASHVILLE
114.1 BNA
Chan 88
N36°08.22'-W86°41.09'

DYERSBURG
116.8 DYR
Chan 115

GHAM
111.6 GHM
Chan 53
N35°50.04'-W87°27.11'

JOHN C. TUNE

NASHVILLE INTL

SMYRNA

MURFREESBORO MUNI

LINGA
N36°05.17'
W86°48.87'

HELAM
N35°27.44'
W88°38.58'

MEMPHIS
117.5 MEM
Chan 122
N35°00.91'-W89°58.99'
L-18, H-6

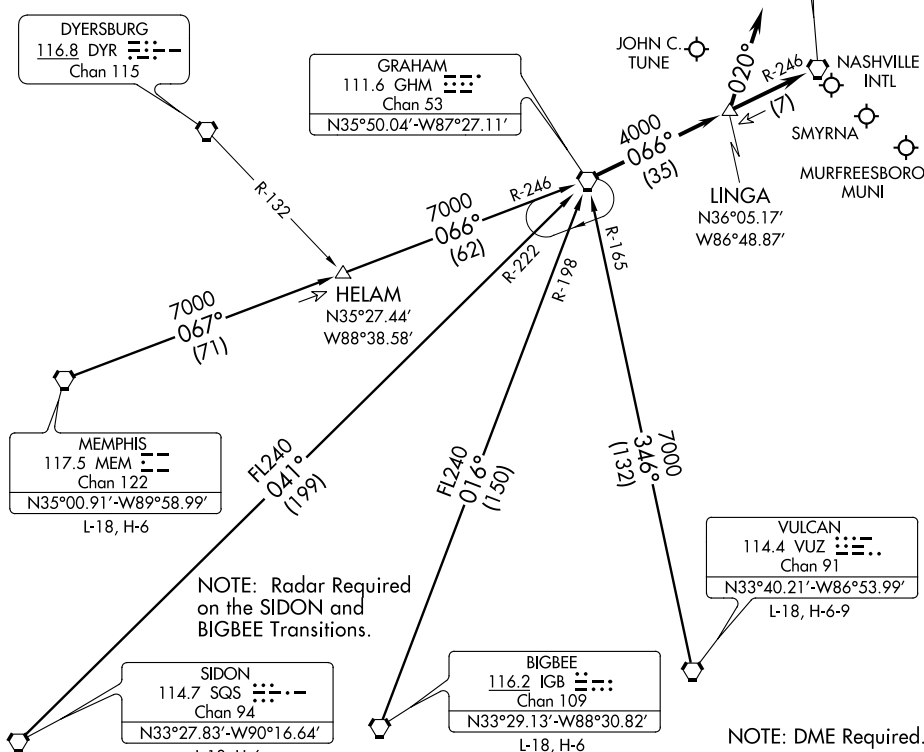
NOTE: Radar Required
on the SIDON and
BIGBEE Transitions.

SIDON
114.7 SQS
Chan 94
N33°27.83'-W90°16.64'
L-18, H-6

BIGBEE
116.2 IGB
Chan 109
N33°29.13'-W88°30.82'
L-18, H-6

VULCAN
114.4 VUZ
Chan 91
N33°40.21'-W86°53.99'
L-18, H-6-9

NOTE: DME Required.
NOTE: Chart not to scale.



SE-1, 07 FEB 2013 to 07 MAR 2013

SE-1, 07 FEB 2013 to 07 MAR 2013

BIGBEE TRANSITION (IGB.GHM5): From over IGB VORTAC via IGB R-016 and GHM R-198 to GHM VORTAC. Thence. . . .

MEMPHIS TRANSITION (MEM.GHM5): From over MEM VORTAC via MEM R-067 and GHM R-246 to GHM VORTAC. Thence. . . .

SIDON TRANSITION (SQS.GHM5): From over SQS VORTAC via SQS R-041 and GHM R-222 to GHM VORTAC. Thence. . . .

VULCAN TRANSITION (VUZ.GHM5): From over VUZ VORTAC via VUZ R-346 and GHM R-165 to GHM VORTAC. Thence. . . .

. . . .TURBOJETS/TURBOPROPS; LANDING NORTH: From over GHM VORTAC via BNA R-246 to BNA VORTAC. Expect vectors to final approach course passing GHM VORTAC.

LANDING SOUTH: From over GHM VORTAC via BNA R-246 to LINGA. Thence heading 020° for vectors to final approach course.

NON-TURBINE; ALL RUNWAYS: From over GHM VORTAC via BNA R-246 to BNA VORTAC. Expect vectors to final approach course passing GHM VORTAC.

GRAHAM FIVE ARRIVAL

NASHVILLE, TENNESSEE