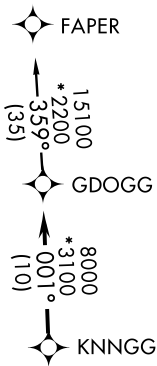


# GDOGG ONE DEPARTURE (RNAV)

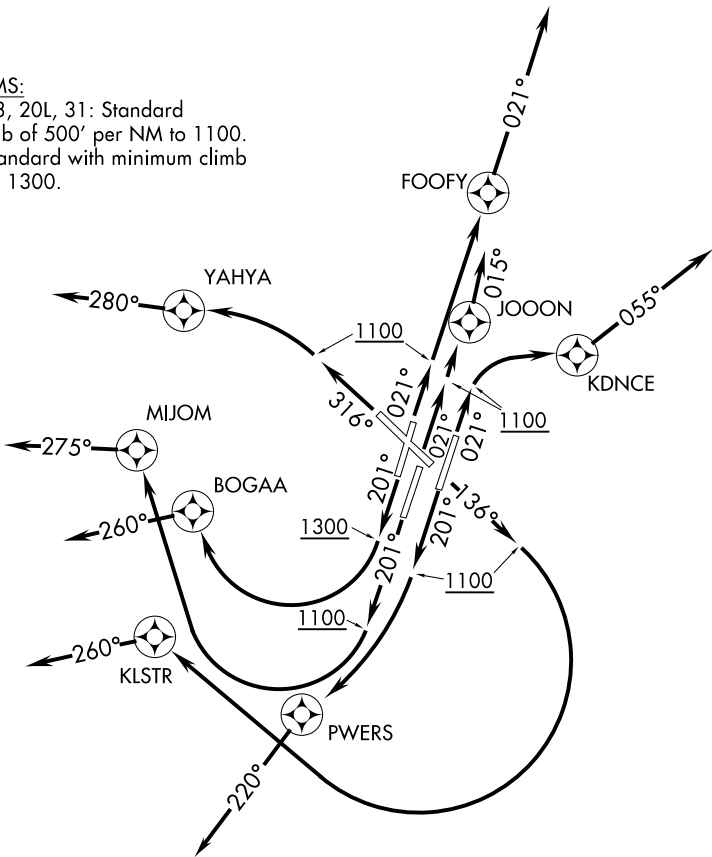
ATIS 135.1  
 CLNC DEL 126.05  
 GND CON  
 121.9 348.6  
 NASHVILLE TOWER  
 118.6 257.8  
 NASHVILLE DEP CON  
 118.4 360.7 (019°-199°)  
 119.35 372.0 (200°-018°)



- NOTE: Transponder code will be issued via PDC or Nashville clearance delivery.
- NOTE: If unable to accept climb rates, advise ATC on initial contact.
- NOTE: RNAV-1
- NOTE: DME/DME/IRU or GPS required.
- NOTE: Radar required.

### TAKEOFF MINIMUMS:

Rwys 2C, 2L, 2R, 13, 20L, 31: Standard with minimum climb of 500' per NM to 1100.  
 Rwys 20C, 20R: Standard with minimum climb of 500' per NM to 1300.



(NARRATIVE ON FOLLOWING PAGE)

NOTE: Chart not to scale.

# GDOGG ONE DEPARTURE (RNAV)

SE-1, 07 FEB 2013 to 07 MAR 2013

SE-1, 07 FEB 2013 to 07 MAR 2013