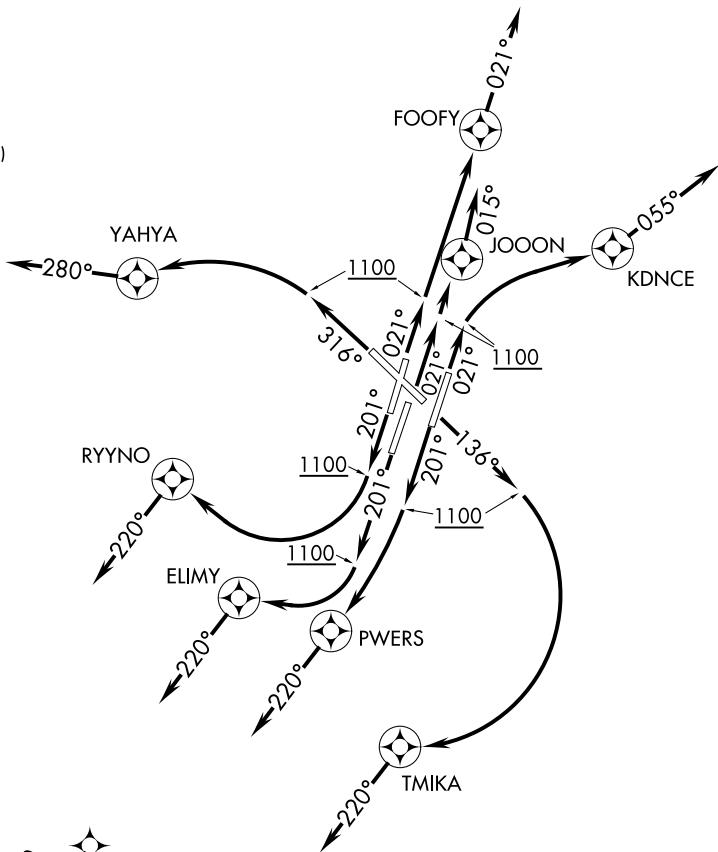


DRURY ONE DEPARTURE (RNAV)

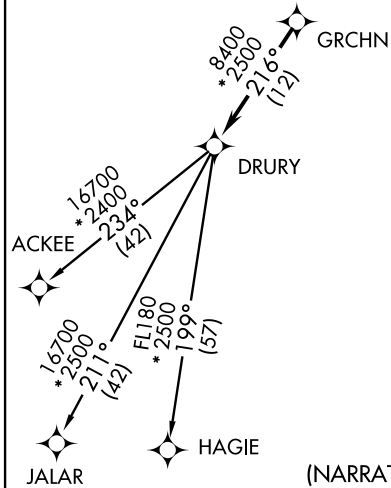
ATIS 135.1
CLNC DEL 126.05
GND CON
121.9 348.6
NASHVILLE TOWER
118.6 257.8
NASHVILLE DEP CON
118.4 360.7 (019°-199°)
119.35 372.0 (200°-018°)



TAKEOFF MINIMUMS:

Rwys 2C, 2L, 2R, 13, 20L, 20R, 31: Standard with minimum climb of 500' per NM to 1100.
Rwy 20C: Standard with minimum climb of 500' per NM to 1300.

- NOTE: Transponder code will be issued via PDC or Nashville clearance delivery.
- NOTE: If unable to accept climb rates, advise ATC on initial contact.
- NOTE: RNAV-1
- NOTE: DME/DME/IRU or GPS required.
- NOTE: Radar required.



(NARRATIVE ON FOLLOWING PAGE)

NOTE: Chart not to scale.

SE-1, 07 FEB 2013 to 07 MAR 2013

SE-1, 07 FEB 2013 to 07 MAR 2013