

WAAS CH 40313 W36B	APP CRS 006°	Rwy Idg 5930 THRE 14 Apt Elev 35
--	------------------------	--

RNAV (GPS) Z RWY 36L

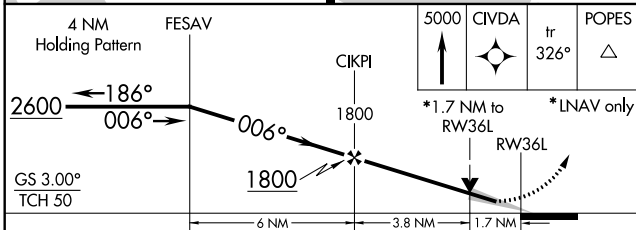
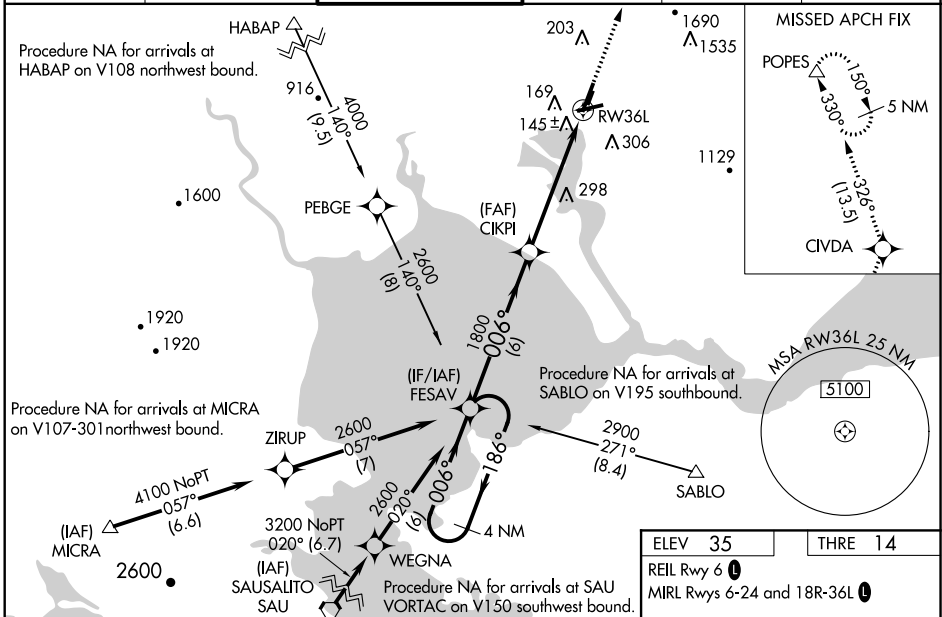
NAPA COUNTY (APC)

⚠ For uncompensated Baro-VNAV systems, LNAV/VNAV NA below -15°C (5°F) or above 43°C (109°F). DME/DME RNP-0.3 NA. When local altimeter setting not received, use Concord altimeter setting and increase all DA 41 feet, all MDA 60 feet, and increase visibility LNAV/VNAV all Cats ½ mile and LNAV Cats C/D and Circling Cat C ¼ mile. VDP and Baro-VNAV NA when using Concord altimeter setting. For inoperative MALS, increase visibility LNAV/VNAV Cat D ¼ mile and LNAV Cats C/D ⅓ mile. For inoperative MALS when using Concord altimeter setting, increase visibility LPV all Cats ½ mile, LNAV/VNAV all Cats ⅓ mile, and LNAV Cat D ¼ mile. Missed approach requires minimum climb of 480 feet per NM to 2200. If unable, see RNAV (GPS) Y RWY 36L.

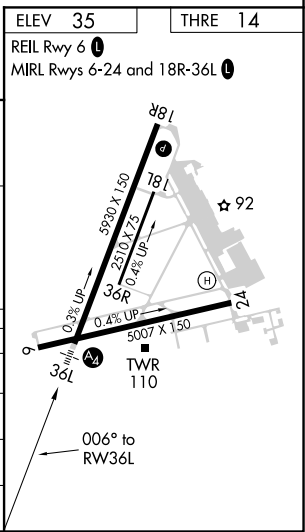
MALS
⚠

MISSED APPROACH:
Climb to 5000 direct CIVDA and on track 326° to POPES and hold, continue climb-in-hold to 5000.

ATIS 124.05	OAKLAND CENTER 127.8 353.5	NAPA TOWER ★ 118.7 (CTAF) 0 257.8	GND CON 121.7	CLNC DEL 127.85	UNICOM 122.95
-----------------------	--------------------------------------	---	-------------------------	---------------------------	-------------------------



CATEGORY	A	B	C	D
LPV DA		264-¾	250 (300-¾)	
LNAV/VNAV DA		369-⅞	355 (400-⅞)	
LNAV MDA	600-¾	586 (600-¾)	600-1⅜	586 (600-1⅜)
CIRCLING	700-1 665 (700-1)	880-1¼ 845 (900-1¼)	980-2¾ 945 (1000-2¾)	1240-3 1205 (1300-3)



SW-2, 07 FEB 2013 to 07 MAR 2013

SW-2, 07 FEB 2013 to 07 MAR 2013