

WAAS CH 56613 W36A	APP CRS 006°	Rwy Idg THRE 14 Apt Elev 35
--	------------------------	--

RNAV (GPS) Y RWY 36L

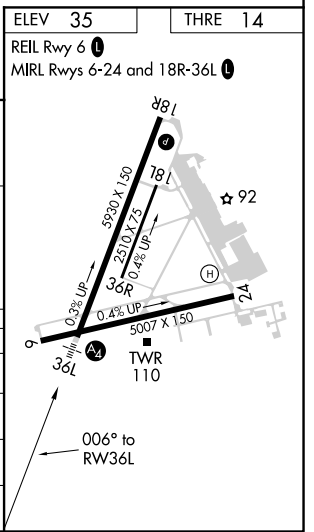
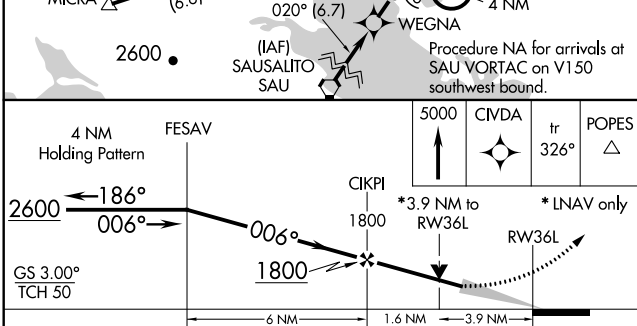
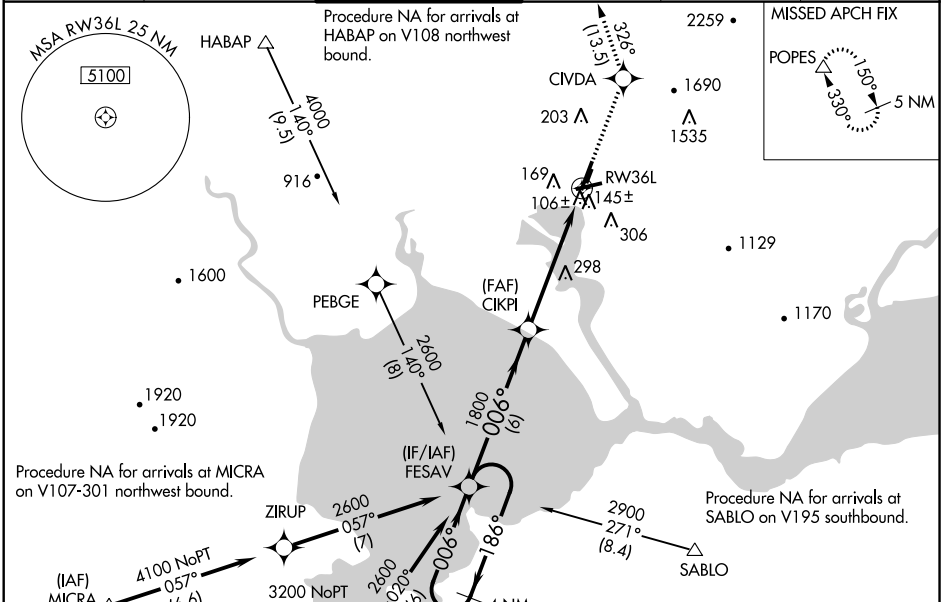
NAPA COUNTY (APC)

⚠ Inoperative table does not apply. For uncompensated Baro-VNAV systems, LNAV/VNAV NA below -15°C (5°F) or above 43°C (109°F). DME/DME RNP-0.3 NA. When local altimeter setting not received, use Concord altimeter setting and increase all DA 41 feet, all MDA 60 feet. VDP and Baro-VNAV NA when using Concord altimeter setting.

MAIS

MISSED APPROACH: Climb to 5000 direct CIVDA and on track 326° to POPES and hold, continue climb-in-hold to 5000.

ATIS 124.05	OAKLAND CENTER 127.8 353.5	NAPA TOWER ★ 118.7 (CTAF) 0 257.8	GND CON 121.7	CLNC DEL 127.85	UNICOM 122.95
-----------------------	--------------------------------------	---	-------------------------	---------------------------	-------------------------



CATEGORY	A	B	C	D
LPV DA	1246-5	1232 (1300-5)		
LNAV/VNAV DA	1039-4	1025 (1100-4)		
LNAV MDA	1300-1¼ 1286 (1300-1¼)	1300-3 1286 (1300-3)		
CIRCLING	1300-1¼ 1265 (1300-1¼)	1300-1½ 1265 (1300-1½)	1300-3 1265 (1300-3)	

SW-2, 07 FEB 2013 to 07 MAR 2013

SW-2, 07 FEB 2013 to 07 MAR 2013