

LOC/DME I-APC 111.3 Chan 50	APP CRS 006°	Rwy Idg THRE Apt Elev 35	5930
--	------------------------	--	-------------

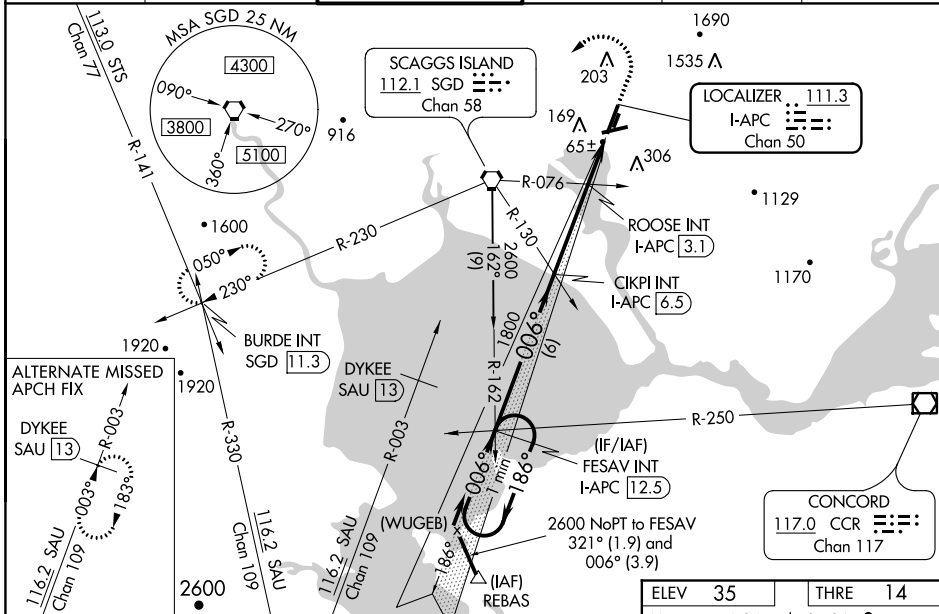
ILS or LOC RWY 36L

NAPA COUNTY (APC)

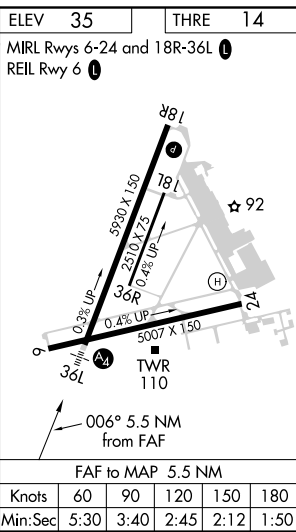
⚠ When local altimeter setting not received, use Concord altimeter setting and increase all DA 41 feet; increase all MDA 60 feet and visibility Circling Cat B ¼ mile and; increase ROOSE fix minimums S-L 36L visibility Cats C and D ¼ mile, Circling Cat B ¼ mile. VDP NA when using Concord altimeter setting. For inoperative MALS, increase S-LOC Cats C and D visibility ½ mile; increase ROOSE fix S-LOC Cats C and D visibility ¾ mile. When using Concord altimeter setting; for inoperative MALS, increase ROOSE fix S-LOC Cats C and D visibility ½ mile.

MALS
MISSED APPROACH: Climb to 500 then climbing left turn to 3200 then heading 200° and on SGD VORTAC R-230 to BURDE/SGD 11.3 DME and hold.

ATIS 124.05	OAKLAND CENTER 127.8 353.5	NAPA TOWER ★ 118.7 (CTAF) 257.8	GND CON 121.7	CLNC DEL 127.85	UNICOM 122.95
-----------------------	--------------------------------------	---	-------------------------	---------------------------	-------------------------



One Minute Holding Pattern	FESAV INT I-APC (12.5)	CIKPI INT I-APC (6.5)	ROOSE INT I-APC (3.1)	SGD R-230	BURDE INT
	2600 ← 186°	1800	1800	3200	
GS 3.00° TCH 50	006°	006°	006°	hdg 200°	
# 740 when using Concord altimeter setting.		# 680			
	6 NM	3.4 NM	0.8 NM	1.2 NM	
CATEGORY	A	B	C	D	
S-ILS 36L		214-¾	200 (200-¾)		
S-LOC 36L	680-¾	666 (700-¾)	680-1¾	666 (700-1¾)	
CIRCLING	700-1	820-1	920-2¾	1180-3	
	665 (700-1)	785 (800-1)	885 (900-2¾)	1145 (1200-3)	
ROOSE FIX MINIMUMS (DUAL VOR RECEIVERS OR DME REQUIRED)					
S-LOC 36L	460-¾	446 (500-¾)	460-1	446 (500-1)	
CIRCLING	700-1	820-1	920-2¾	1180-3	
	665 (700-1)	785 (800-1)	885 (900-2¾)	1145 (1200-3)	



SW-2, 07 FEB 2013 to 07 MAR 2013

SW-2, 07 FEB 2013 to 07 MAR 2013

ELEV 35	THRE 14
MIRL Rwy 6-24 and 18R-36L	
REIL Rwy 6	
Knots	60 90 120 150 180
Min:Sec	5:30 3:40 2:45 2:12 1:50