

LOC I-BSQ 111.9	APP CRS 354°	Rwy Idg THRE Apt Elev	9503 21 25
---------------------------	------------------------	-----------------------------	---------------------------------------

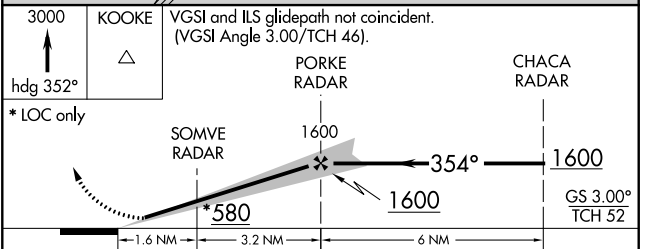
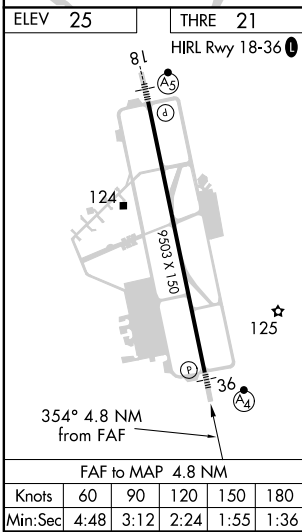
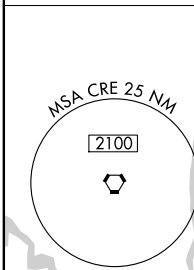
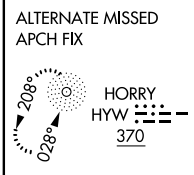
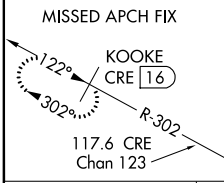
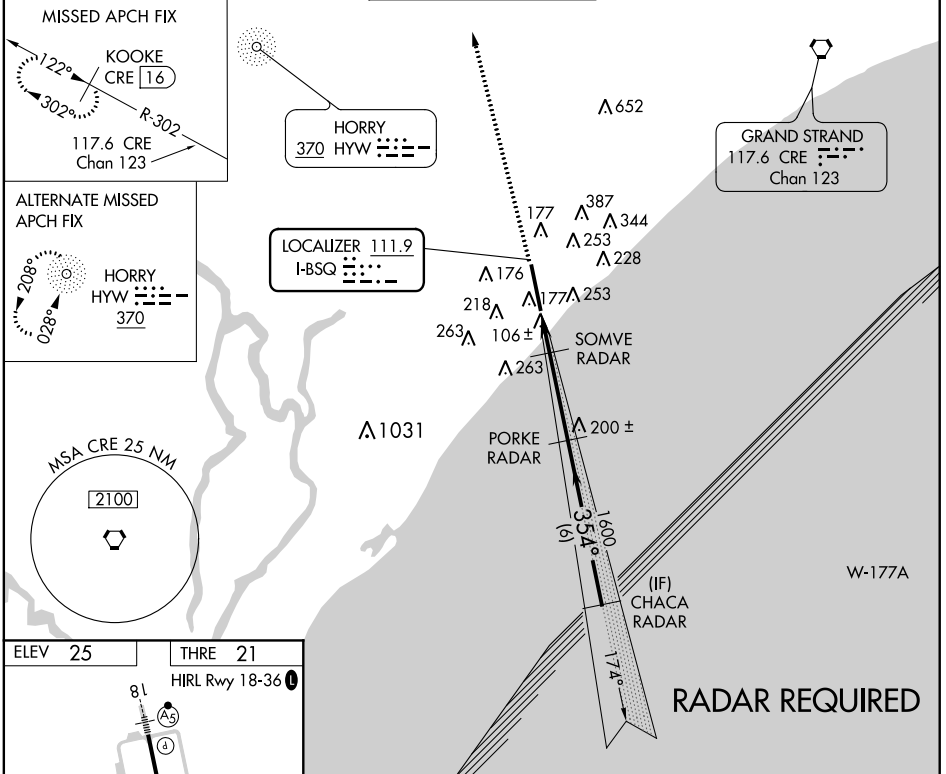
AL-280 (FAA)

ILS or LOC RWY 36

MYRTLE BEACH INTL (MYR)

<p>▼ Radar required.</p> <p>▲ For inoperative MALSF increase S-ILS 36 all Cats visibility to RVR 4000.</p>	<p>MALSF</p>	<p>MISSED APPROACH: Climb to 3000 on heading 352° to KOOKE INT/CRE 16 DME and hold.</p>
--	--------------	---

<p>ATIS 123.925</p>	<p>MYRTLE BEACH APP CON * (171° 321°) 127.4 257.95 (322°-170°) 119.2 350.3</p>	<p>MYRTLE BEACH TOWER * 128.45 (CTAF) 259.3</p>	<p>GND CON 120.3 275.8</p>	<p>CLNC DEL 132.175</p>	<p>UNICOM 122.95</p>
--------------------------------	--	--	---------------------------------------	------------------------------------	---------------------------------



CATEGORY	A	B	C	D
S-ILS 36	221/26		200 (200- ³ / ₈)	
S-LOC 36	360/40	339 (400- ³ / ₄)	360/35	339 (400- ³ / ₄)
CIRCLING	560-1	535 (600-1)	560-1 ¹ / ₂	640-2
			535 (600-1 ¹ / ₂)	615 (700-2)

SE-2, 07 FEB 2013 to 07 MAR 2013

SE-2, 07 FEB 2013 to 07 MAR 2013