

WAAS Ch 56618 W06A	APP CRS 060°	Rwy Idg 6501 TDZE 623 Apt Elev 629
--	------------------------	---

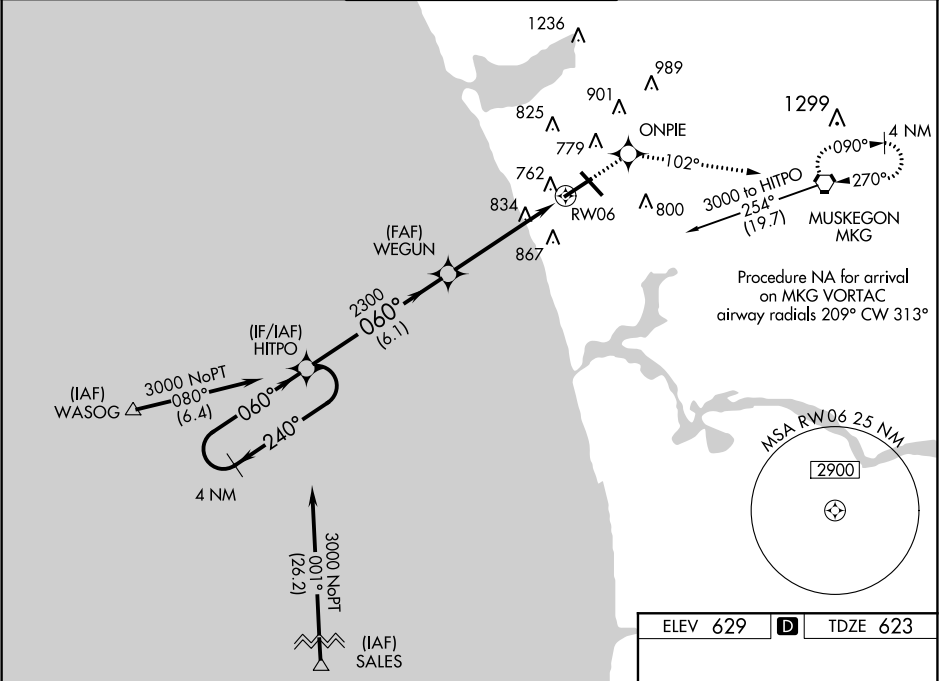
RNAV (GPS) RWY 6

MUSKEGON COUNTY (MKG)

ASR When VGSI inoperative, procedure NA at night. Baro-VNAV NA when using Fremont altimeter setting. For uncompensated Baro-VNAV systems, LNAV/VNAV NA below -1.6°C (4°F) or above 47°C (116°F). DME/DME RNP-0.3 NA. Visibility reduction by helicopters NA. When local altimeter setting not received, use Fremont altimeter setting and increase all DA 65 feet and all MDA 80 feet. Increase LPV, LNAV/VNAV all Cats and LNAV Cats C/D visibility ¼ mile.

MISSED APPROACH:
Climb to 3000 direct ONPIE and on track 102° to MKG VORTAC and hold.

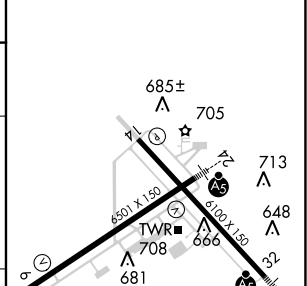
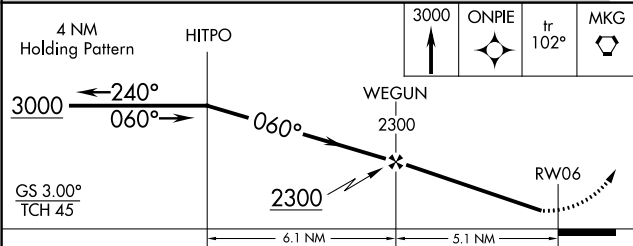
ATIS 124.3	MUSKEGON APP CON ★ 119.8 290.35 (N of V2) 133.825 290.35 (S of V2)	MUSKEGON TOWER★ 126.25 (CTAF) 343.725	GND CON 121.6	UNICOM 122.95
----------------------	--	--	-------------------------	-------------------------



EC-1, 07 FEB 2013 to 07 MAR 2013

EC-1, 07 FEB 2013 to 07 MAR 2013

ELEV 629	D	TDZE 623
----------	----------	----------



CATEGORY	A	B	C	D
LPV DA		926-1	303 (300-1)	
LNAV/VNAV DA		1173-2	550 (600-2)	
LNAV MDA	1100-1	477 (500-1)	1100-1½ 477 (500-1½)	1100-1½ 477 (500-1½)
CIRCLING	1100-1	471 (500-1)	1140-1½ 511 (600-1½)	1180-2 551 (600-2)

REIL Rwy 6 and 14 **1**
HIRL Rwy 6-24 and 14-32 **1**