

MUSKEGON, MICHIGAN

AL-278 (FAA)

# RNAV (GPS) RWY 32

MUSKEGON COUNTY (MKG)

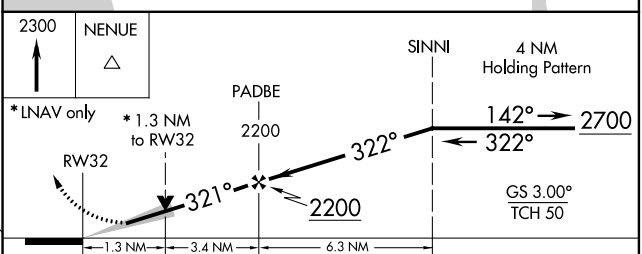
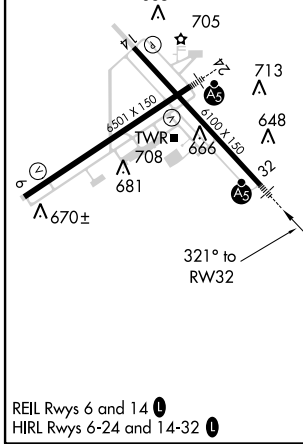
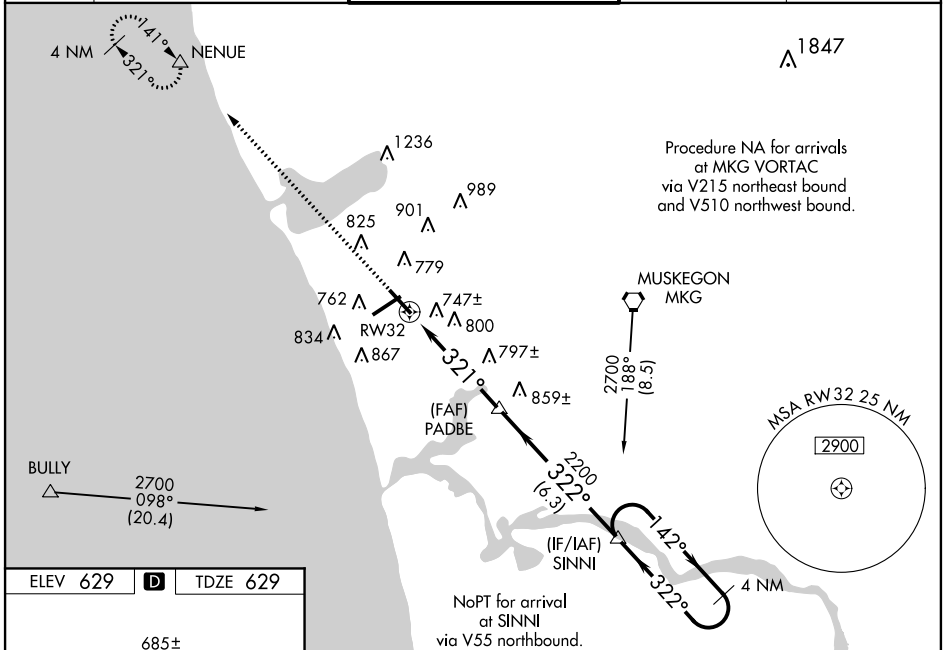
WAAS CH <b>63010</b> <b>W32A</b>	APP CRS <b>321°</b>	Rwy Idg <b>6100</b>
		TDZE <b>629</b>
		Apr Elev <b>629</b>

**⚠** For inoperative MALS/R, increase LPV all Cats visibility to RVR 5000. Baro-VNAV NA when using Fremont altimeter setting. For uncompensated Baro-VNAV systems, LNAV/VNAV NA below -16°C (4°F) or above 47°C (116°F). DME/DME RNP-0.3 NA. When local altimeter setting not received, use Fremont altimeter setting and increase all DA 65 feet, all MDA 80 feet, increase LPV all Cats visibility to RVR 4000, LNAV/VNAV all Cats visibility to RVR 6000, LNAV Cat C visibility to RVR 5000 and LNAV Cat D visibility to RVR 6000. VDP NA when using Fremont altimeter setting.

**MALS/R**

**MISSED APPROACH:**  
Climb to 2300 direct NENUE and hold.

ATIS <b>124.3</b>	MUSKEGON APP CON* <b>119.8 290.35</b> (N of V2) <b>133.825 290.35</b> (S of V2)	MUSKEGON TOWER* <b>126.25</b> (CTAF) <b>343.725</b>	GND CON <b>121.6</b>	UNICOM <b>122.95</b>
----------------------	---	--	-------------------------	-------------------------



CATEGORY	A	B	C	D
LPV DA		913/24	284 (300-½)	
LNAV/VNAV DA		1029/50	400 (400-1)	
LNAV MDA	1100/24	471 (500-½)	1100/40 471 (500-¾)	1100/50 471 (500-1)
CIRCLING	1100-1	471 (500-1)	1140-1½ 511 (600-1½)	1180-2 551 (600-2)

MUSKEGON, MICHIGAN  
Amdt 1 12264

43°10'N-86°14'W

# RNAV (GPS) RWY 32

EC-1, 07 FEB 2013 to 07 MAR 2013

EC-1, 07 FEB 2013 to 07 MAR 2013