

WAAS Ch 42918 W24A	APP CRS 240°	Rwy Idg TDZE Apt Elev	6501 627 629
--	------------------------	-----------------------------	---

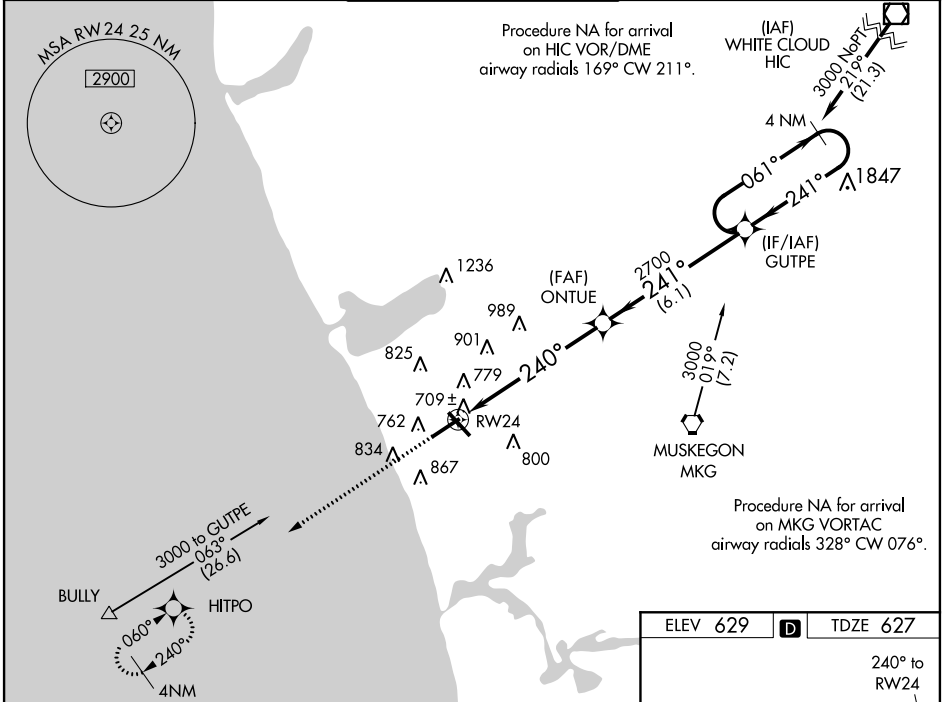
RNAV (GPS) RWY 24

MUSKEGON COUNTY (MKG)

⚠ For uncompensated Baro-VNAV systems, LNAV/VNAV NA below -16°C (4°F) or above 48°C (118°F). DME/DME RNP-0.3 NA. Baro-VNAV and VDP NA when using Fremont altimeter setting. When local altimeter setting not received, use Fremont altimeter setting and increase all ASR DA 65 feet and all MDA 80 feet. Increase LNAV/VNAV visibility all Cats ¼ mile. For inoperative MALSR, when using Fremont altimeter setting: increase LPV visibility to 1 mile all Cats.


MALSR
 MISSED APPROACH:
Climb to 3000 direct HITPO and hold.

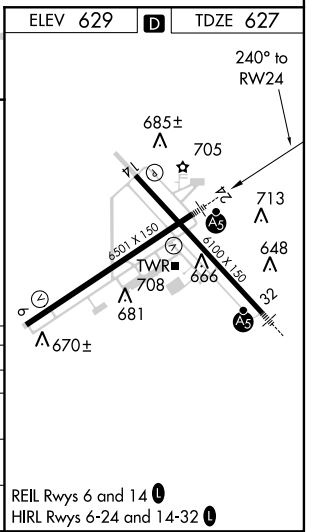
ATIS 124.3	MUSKEGON APP CON * 119.8 290.35 (N of V2) 133.825 290.35 (S of V2)	MUSKEGON TOWER * 126.25 (CTAF) 343.725	GND CON 121.6	UNICOM 122.95
----------------------	--	---	-------------------------	-------------------------



EC-1, 07 FEB 2013 to 07 MAR 2013

EC-1, 07 FEB 2013 to 07 MAR 2013

3000 ↑ HITPO *LNAV only	GUTPE 4 NM Holding Pattern			
	ONTUE 2700 061° → 3000 ← 241° 240° → 2700 ← 241° *1.4 NM to RW24 RW24 1.4 4.8 NM 6.1 NM			
CATEGORY	A	B	C	D
LPV DA	827-½ 200 (200-½)			
LNAV/VNAV DA	1076-1 449 (500-1)			
LNAV MDA	1140-½ 513 (600-½)	1140-1 513 (600-1)	1140-1¼ 513 (500-1¼)	
CIRCLING	1140-1 511 (600-1)	1140-1½ 511 (600-1½)	1180-2 551 (600-2)	



REIL Rwy 6 and 14 **Ⓛ**
HIRL Rwy 6-24 and 14-32 **Ⓛ**