

# RNAV (GPS) RWY 14

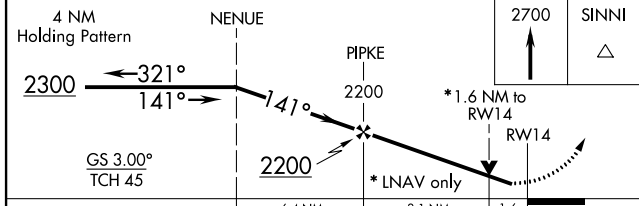
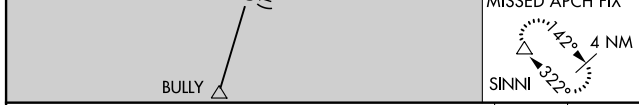
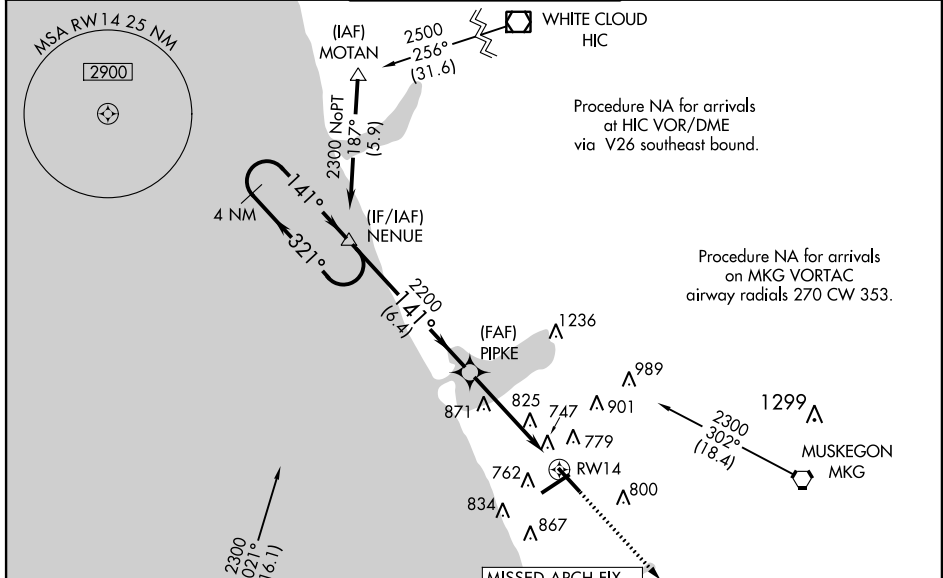
MUSKEGON COUNTY (MKG)

WAAS CH <b>69410</b> <b>W14A</b>	APP CRS <b>141°</b>	Rwy Idg TDZE Apt Elev	<b>6100</b> <b>627</b> <b>629</b>
--	------------------------	-----------------------------	---

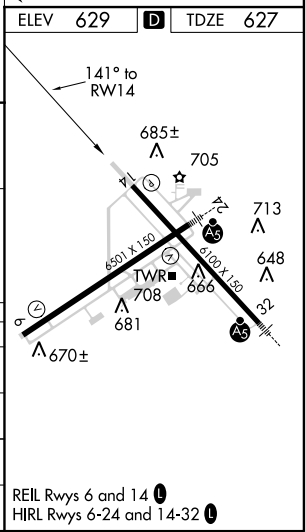
**⚠** Baro-VNAV NA when using Fremont altimeter setting. For uncompensated Baro-VNAV systems, LNAV/VNAV NA below -16°C (4°F) or above 47°C (116°F).  
**⚠** DME/DME RNP-0.3 NA. Visibility reduction by helicopters NA. When local altimeter setting not received, use Fremont altimeter setting and increase all DA 65 feet and all MDA 80 feet, increase LPV all Cats, LNAV/VNAV all Cats, LNAV Cats C and D, and Circling Cat C visibility 1/2 mile. VDP NA when using Fremont altimeter setting.

**MISSED APPROACH:**  
Climb to 2700 direct SINNI and hold.

ATIS <b>124.3</b>	MUSKEGON APP CON ★ <b>119.8 290.35</b> (N of V2) <b>133.825 290.35</b> (S of V2)	MUSKEGON TOWER ★ <b>126.25</b> (CTAF) <b>343.725</b>	GND CON <b>121.6</b>	UNICOM <b>122.95</b>
----------------------	--	---	-------------------------	-------------------------



CATEGORY	A	B	C	D
LPV DA		877-3/4	250 (300-3/4)	
LNAV/VNAV DA		1079-1 1/2	452 (500-1 1/2)	
LNAV MDA	1180-1	553 (600-1)	1180-1 1/2 553 (600-1 1/2)	1180-1 3/4 553 (600-1 3/4)
CIRCLING	1180-1	551 (600-1)	1180-1 1/2 551 (600-1 1/2)	1180-2 551 (600-2)



EC-1, 07 FEB 2013 to 07 MAR 2013

EC-1, 07 FEB 2013 to 07 MAR 2013