

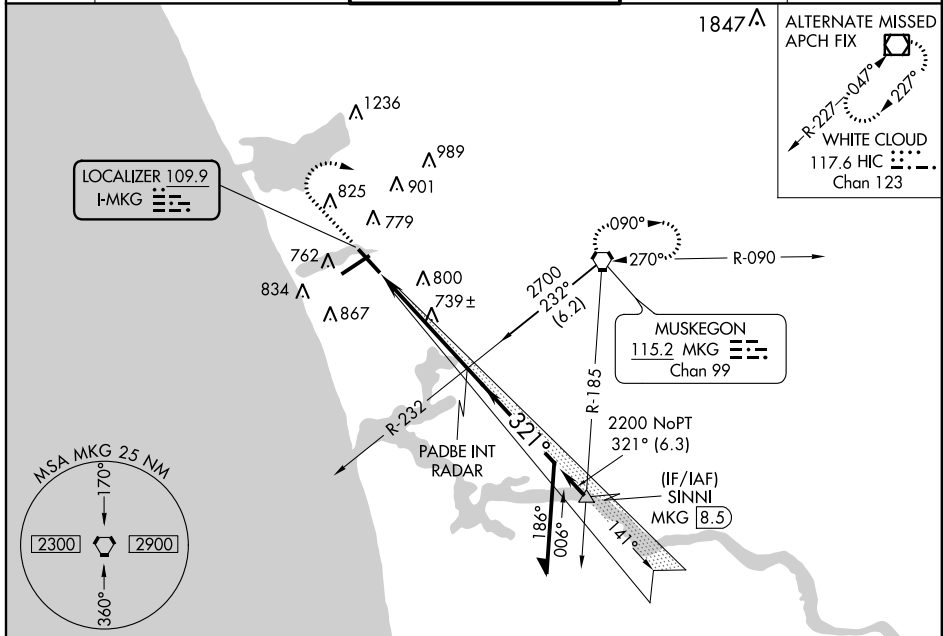
LOC I-MKG 109.9	APP CRS 321°	Rwy Idg 6100
		TDZE 629
		Apt Elev 629

ILS or LOC RWY 32

MUSKEGON COUNTY (MKG)

<p>ASR</p> <p>*RVR 1800 authorized with the use of FD or AP or HUD to DA. When local altimeter setting not received, use Fremont altimeter setting and increase DA 65 feet, and all MDA 80 feet, increase S-LOC Cat C visibility to RVR 4000, Cat D visibility to RVR 5000.</p>	<p>MALSR</p>	<p>MISSED APPROACH: Climb to 2500 then right turn direct MKG VORTAC and hold.</p>
--	---------------------	--

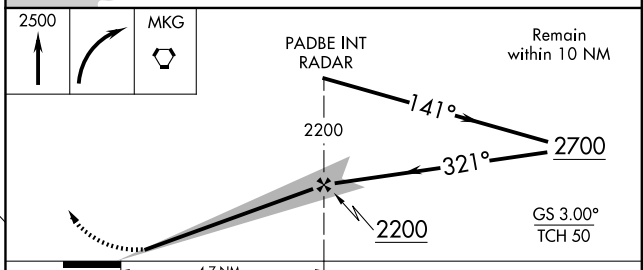
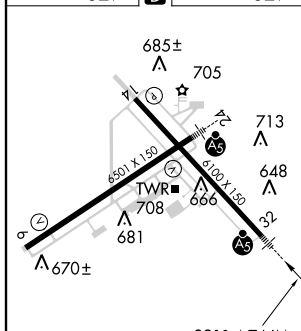
<p>ATIS 124.3</p>	<p>MUSKEGON APP CON * 119.8 290.35 (N of V2) 133.825 290.35 (S of V2)</p>	<p>MUSKEGON TOWER * 126.25 (CTAF) 0 343.725</p>	<p>GND CON 121.6</p>	<p>UNICOM 122.95</p>
-------------------------------------	--	--	--	--



EC-1, 07 FEB 2013 to 07 MAR 2013

EC-1, 07 FEB 2013 to 07 MAR 2013

ELEV 629	D	TDZE 629
-----------------	----------	-----------------



REIL Rwy 6 and 14

HIRL Rwy 6-24 and 14-32

FAF to MAP 4.7 NM

Knots	60	90	120	150	180
Min:Sec	4:42	3:08	2:21	1:53	1:34

CATEGORY	A	B	C	D
S-ILS 32	* 829/24 200 (200-½)			
S-LOC 32	1000/24 371 (400-½)			1000/40 371 (400-¾)
CIRCLING	1080-1 451 (500-1)		1140-1½ 511 (600-1½)	1180-2 551 (600-2)

MUSKEGON, MICHIGAN
Amdt 18A 03JUN10

43°10'N-86°14'W

MUSKEGON COUNTY (MKG)

ILS or LOC RWY 32