

LOC/DME I-CJH <b>109.5</b> Chan 32	APP CRS <b>240°</b>	Rwy ldg TDZE <b>6501</b> <b>627</b> Apt Elev <b>629</b>
--	------------------------	--

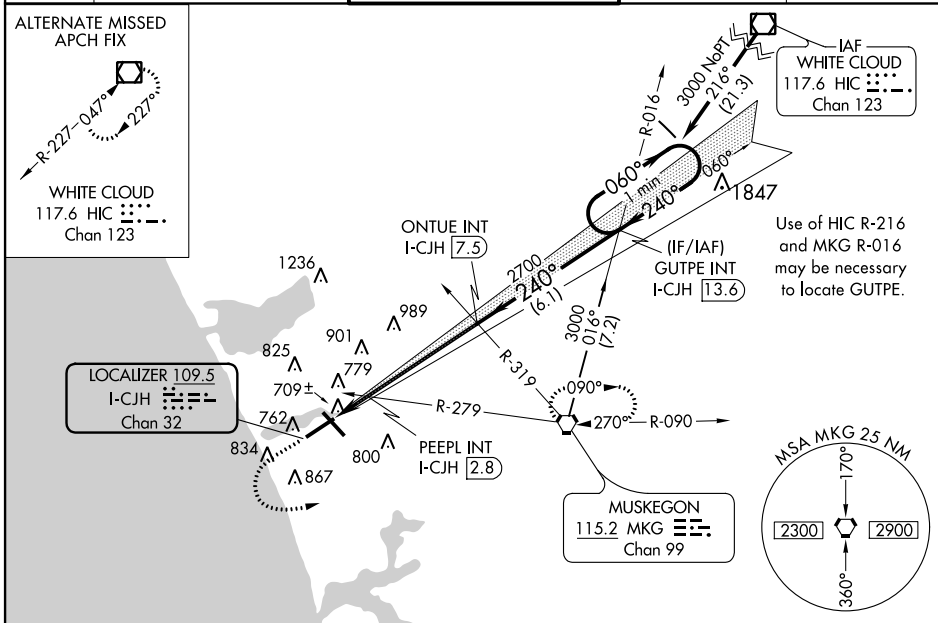
# ILS or LOC RWY 24

MUSKEGON COUNTY (MKG)

**ASR** ▽ VDP NA with Fremont altimeter setting. When local altimeter setting not received, use Fremont altimeter setting and increase all DA 65 feet and all MDA 80 feet. Increase S-LOC 24 Cats C/D and Circling Cat C visibility ¼ mile. PEEPL Fix minimums: increase S-LOC 24 Cat C visibility ¼ mile. PEEPL Fix Minimums: For inoperative MALSRS, increase S-LOC 24 Cat D visibility to 1 mile. For inoperative MALSRS, when using Fremont altimeter setting; increase S-ILS 24 visibility to 1 mile all Cats

**MALSRS** MISSED APPROACH: Climb to 2500 then left turn direct MKG VORTAC and hold.

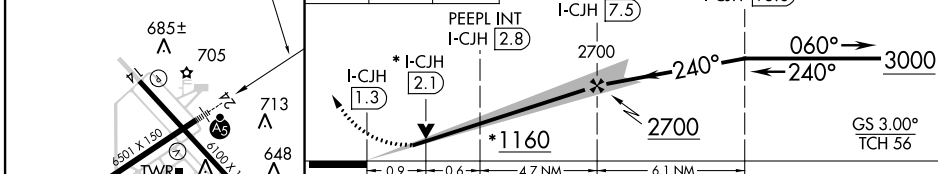
ATIS <b>124.3</b>	MUSKEGON APP CON ★ <b>119.8 290.35</b> (N of V2) <b>133.825 290.35</b> (S of V2)	MUSKEGON TOWER ★ <b>126.25</b> (CTAF) <b>343.725</b>	GND CON <b>121.6</b>	UNICOM <b>122.95</b>
----------------------	--	---	-------------------------	-------------------------



EC-1, 07 FEB 2013 to 07 MAR 2013

EC-1, 07 FEB 2013 to 07 MAR 2013

ELEV 629	<b>D</b> TDZE 627 240° 6.2 NM from FAF	2500	MKG	* 1240 when using Fremont altimeter setting. LOC only	One Minute Holding Pattern
----------	---	------	-----	---	----------------------------



CATEGORY	A	B	C	D
S-ILS 24	827-½ 200 (200-½)			
S-LOC 24	1160-½	533 (600-½)	1160-1 533 (600-1)	1160-1¼ 533 (600-1¼)
CIRCLING	1160-1	531 (600-1)	1160-1½ 531 (600-1½)	1180-2 551 (600-2)
PEEPL FIX MINIMUMS				
S-LOC 24	960-½	333 (400-½)	960-¾ 333 (400-¾)	
CIRCLING	1080-1	451 (500-1)	1140-1½ 511 (600-1½)	1180-2 551 (600-2)

REIL Rwy 6 and 14   
HIRL Rwy 6-24 and 14-32

FAF to MAP 6.2 NM

Knots	60	90	120	150	180
Min:Sec	6:12	4:08	3:06	2:29	2:04