

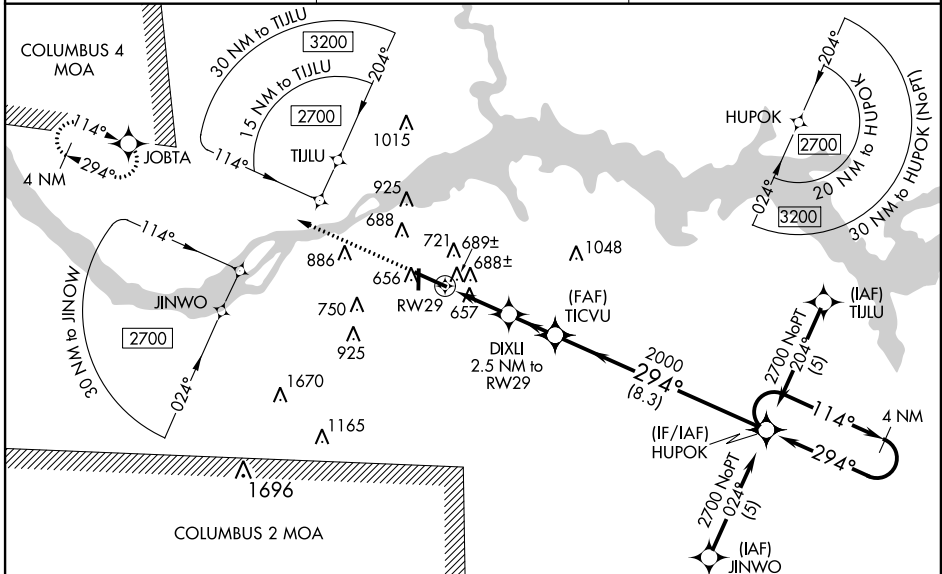
WAAS CH 40000 W29A	APP CRS 294°	Rwy Idg TDZE Apt Elev	6694 551 551
--	------------------------	-----------------------------	---

RNAV (GPS) RWY 29

MUSCLE SHOALS/NORTHWEST ALABAMA RGNL (MISL)

<p>⚠ DME/DME RNP-0.3 NA. For uncompensated Baro-VNAV systems, LNAV/VNAV NA below -16° C (4° F) or above 47° C (116° F). When local altimeter setting not received use Decatur altimeter setting and increase all DA 83 feet and all MDA 100 feet; increase LNAV/VNAV all Cats and LNAV Cat C and D visibility ¼ mile. When VGSI Inop, circling Rwy 18 NA at night. Baro-VNAV NA when using Decatur altimeter setting. For inoperative MALSR when using Decatur altimeter setting, increase LPV all Cats visibility to 1 mile. VDP NA with Decatur altimeter setting.</p>	<p>MALSR</p> <p>MISSED APPROACH: Climb to 3000 direct JOBTA and hold.</p>
---	---

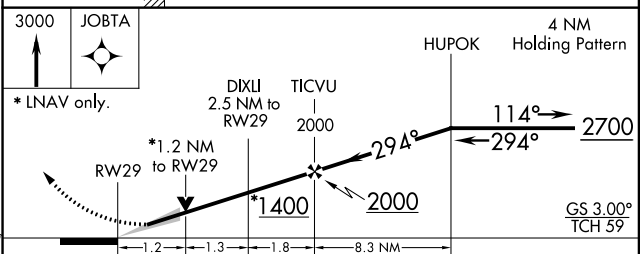
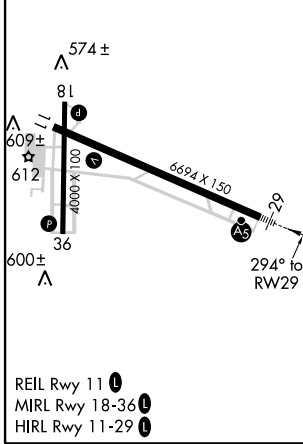
ASOS 119.425	MEMPHIS CENTER 120.8 307.0	UNICOM 123.05 (CTAF)
------------------------	--------------------------------------	--------------------------------



SE-4, 07 FEB 2013 to 07 MAR 2013

SE-4, 07 FEB 2013 to 07 MAR 2013

ELEV 551	TDZE 551
----------	----------



CATEGORY	A	B	C	D
LPV DA		751-½	200 (200-½)	
LNAV/VNAV DA		975-1	424 (500-1)	
LNAV MDA	980-½	429 (500-½)	980-¾ 429 (500-¾)	980-1 429 (500-1)
CIRCLING	1040-1	489 (500-1)	1040-1½ 489 (500-1½)	1120-2 569 (600-2)