

WAAS CH <b>90518</b> <b>W11A</b>	APP CRS <b>114°</b>	Rwy Idg 6694
		TDZE 544
		Apt Elev 551

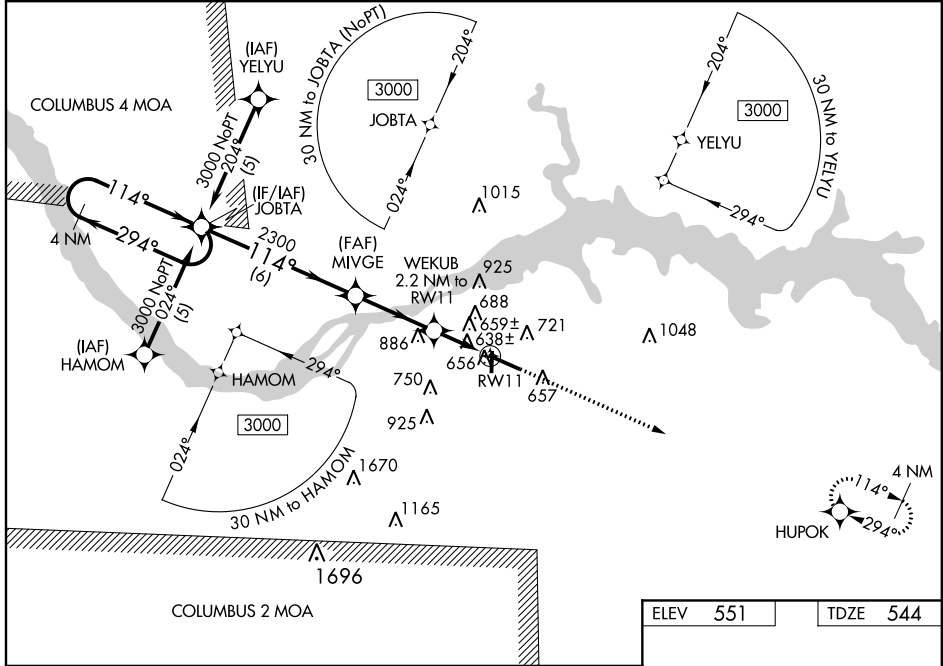
# RNAV (GPS) RWY 11

MUSCLE SHOALS/NORTHWEST ALABAMA RGNL (MISL)

**⚠** DME/DME RNP-0.3 NA. Visibility reduction by helicopters NA. When VGSI inop, Circling Rwy 18 NA at night. When local altimeter setting not received use Decatur altimeter setting and increase all DA 83 feet and all MDA 100 feet; increase LPV all Cats, LNAV/VNAV all Cats, and LNAV Cat C and D visibility ¼ mile. For uncompensated Baro-VNAV systems, LNAV/VNAV NA below -16°C (4°F) or above 48°C (118°F).  
Baro-VNAV NA when using Decatur altimeter setting, VDP NA with Decatur altimeter setting.

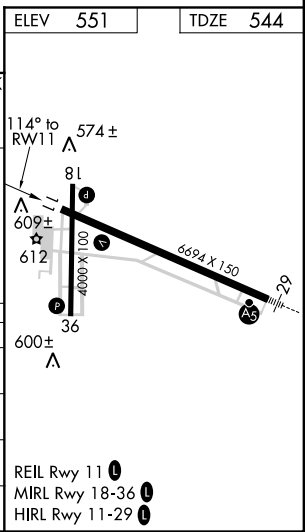
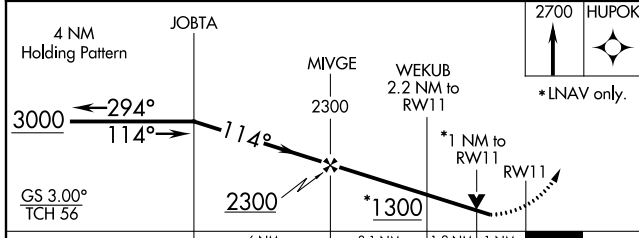
**MISSED APPROACH:**  
Climb to 2700 direct HUPOK and hold.

ASOS <b>119.425</b>	MEMPHIS CENTER <b>120.8 307.0</b>	UNICOM <b>123.05 (CTAF) ①</b>
------------------------	--------------------------------------	----------------------------------



SE-4, 07 FEB 2013 to 07 MAR 2013

SE-4, 07 FEB 2013 to 07 MAR 2013



CATEGORY	A	B	C	D
LPV DA		848-1	304 (300-1)	
LNAV/ VNAV DA		983-1½	439 (500-1½)	
LNAV MDA	920-1	376 (400-1)		920-1¼ 376 (400-1¼)
CIRCLING	1040-1	489 (500-1)	1040-1½ 489 (500-1½)	1120-2 569 (600-2)