


LOC I-MSL <b>109.7</b>	APP CRS <b>294°</b>	Rwy Idg <b>6694</b>
		TDZE <b>551</b>
		Apt Elev <b>551</b>

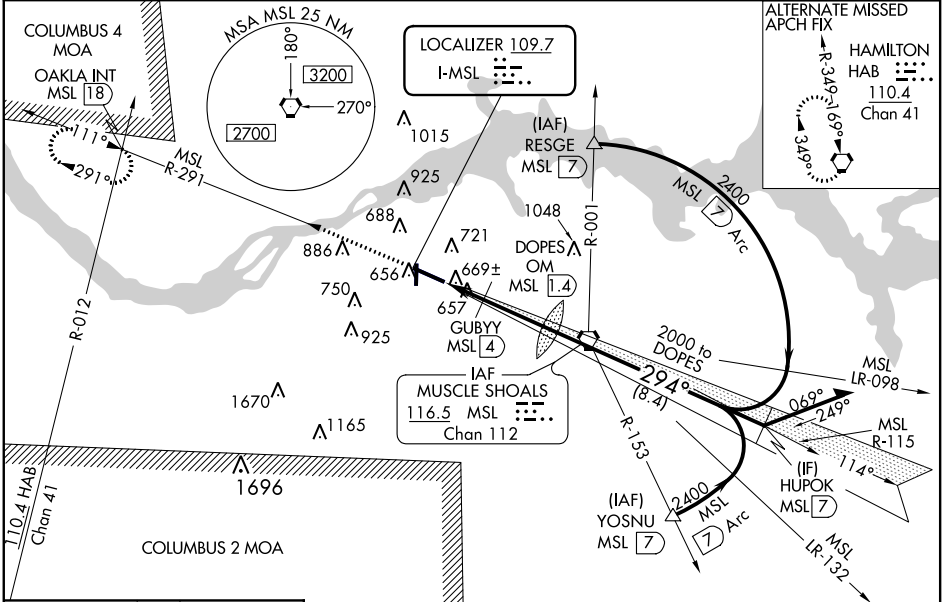
# ILS or LOC RWY 29

MUSCLE SHOALS/NORTHWEST ALABAMA RGNL (MSL)

▼ When local altimeter setting not received, use Decatur altimeter setting; increase all DA 83 feet; all MDA 100 feet and increase S-LOC 29 Cat C visibility ¼ mile and Cat D visibility ½ mile, and Circling Cat C visibility ¼ mile; increase GUBYY Fix minimums S-LOC 29 Cat C and D visibility ¼ mile. DME from MSL VORTAC. Simultaneous reception of I-MSL and MSL VORTAC DME required for GUBYY fix minimums. For inoperative MALSRS when using Decatur altimeter setting, increase S-ILS 29 all Cats visibility to 1 mile. When VGSI Inop, Circling Rwy 18 NA at night.

MALSRS  MISSED APPROACH: Climb to 1100 then climbing left turn to 3000 via MSL VORTAC R-291 to OAKLA INT/MSL VORTAC 18 DME and hold.

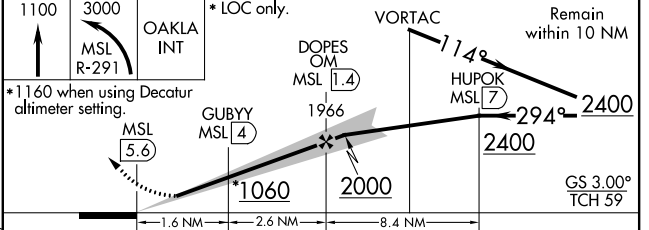
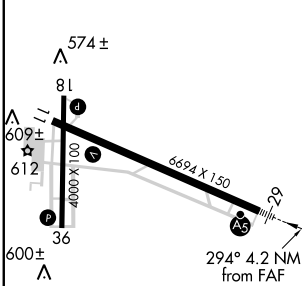
ASOS <b>119.425</b>	MEMPHIS CENTER <b>120.8 307.0</b>	UNICOM <b>123.05 (CTAF)</b>
------------------------	--------------------------------------	--------------------------------





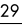
SE-4, 07 FEB 2013 to 07 MAR 2013

SE-4, 07 FEB 2013 to 07 MAR 2013

ELEV 551	TDZE 551
----------	----------



CATEGORY	A	B	C	D
S-ILS 29	751-½		200 (200-½)	
S-LOC 29	1060-½ 509 (600-½)		1060-1 509 (600-1)	
CIRCLING	1060-1 509 (600-1)		1060-1½ 509 (600-1½)	
GUBYY FIX MINIMUMS				
S-LOC 29	920-½ 369 (400-½)		920-¾ 369 (400-¾)	
CIRCLING	1040-1 489 (500-1)		1040-1½ 489 (500-1½)	

REIL Rwy 11   
MIRL Rwy 18-36   
HIRL Rwy 11-29 

FAF to MAP 4.2 NM

Knots	60	90	120	150	180
Min:Sec	4:12	2:48	2:06	1:41	1:24