

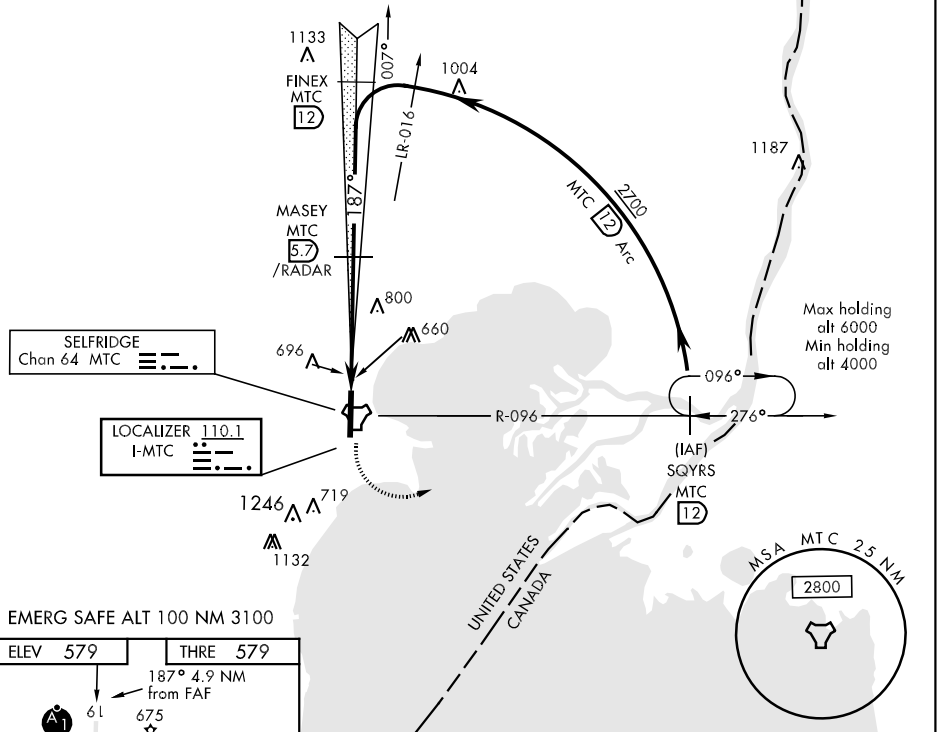
MT. CLEMENS, MICHIGAN

# ILS or LOC/DME RWY 19

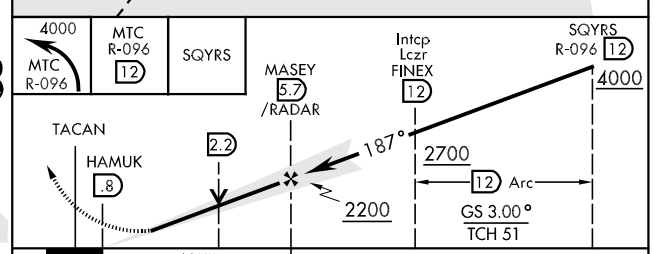
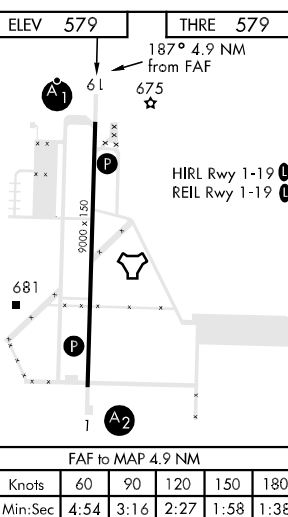
LOC I-MTC <b>110.1</b>	APCH CRS <b>187°</b>	Rwy Idg THRE Arpt Elev <b>9000</b> <b>579</b> <b>579</b>	AL-276 [USAF]	SELFDRIDGE ANGB (KMTCC)
* When ALS inop, increase RVR to 55, vis to 1 mile. ** When ALS inop, increase CAT AB RVR to 55, vis to 1 mile, CAT CDE vis to 1 3/8 miles.			ALSF-1 	MISSED APPROACH: Climbing left turn to 4000, intercept MTC R-096 to SQYRS and hold, continue climb-in-hold to 4000.

ATIS <b>125.325 270.1</b>	SELFDRIDGE APP CON <b>119.6 318.2</b>	SELFDRIDGE TOWER * <b>120.15(CTAF) 225.4</b>	GND CON <b>128.3 275.8</b>	CLNC DEL <b>119.0 259.95</b>
------------------------------	--	---	-------------------------------	---------------------------------

\*\*\* Circling not authorized W of Rwy 1-19.



EMERG SAFE ALT 100 NM 3100



CATEGORY	A	B	C	D	E
S-ILS 19*	923/40		344	(400-34)	
S-LOC 19**	1080/40	501 (600-34)	1080/55	501 (600-1)	
CIRCLING ***	1120-1	541 (600-1)	1120-1 1/2	1140-2	561 (600-2)

MT. CLEMENS, MICHIGAN 42°36'N-82°50'W SELFDRIDGE ANGB (KMTCC)

Amtd 3 23AUG12

# ILS or LOC/DME RWY 19

EC-1, 07 FEB 2013 to 07 MAR 2013

EC-1, 07 FEB 2013 to 07 MAR 2013