

MT. CLEMENS, MICHIGAN

# ILS or LOC/DME RWY 1

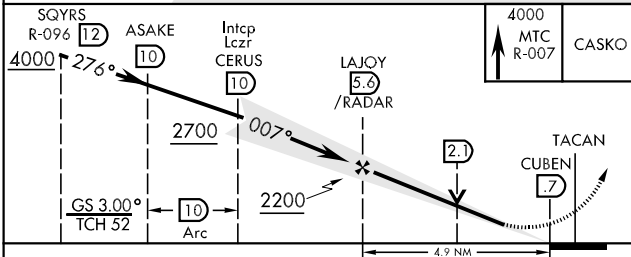
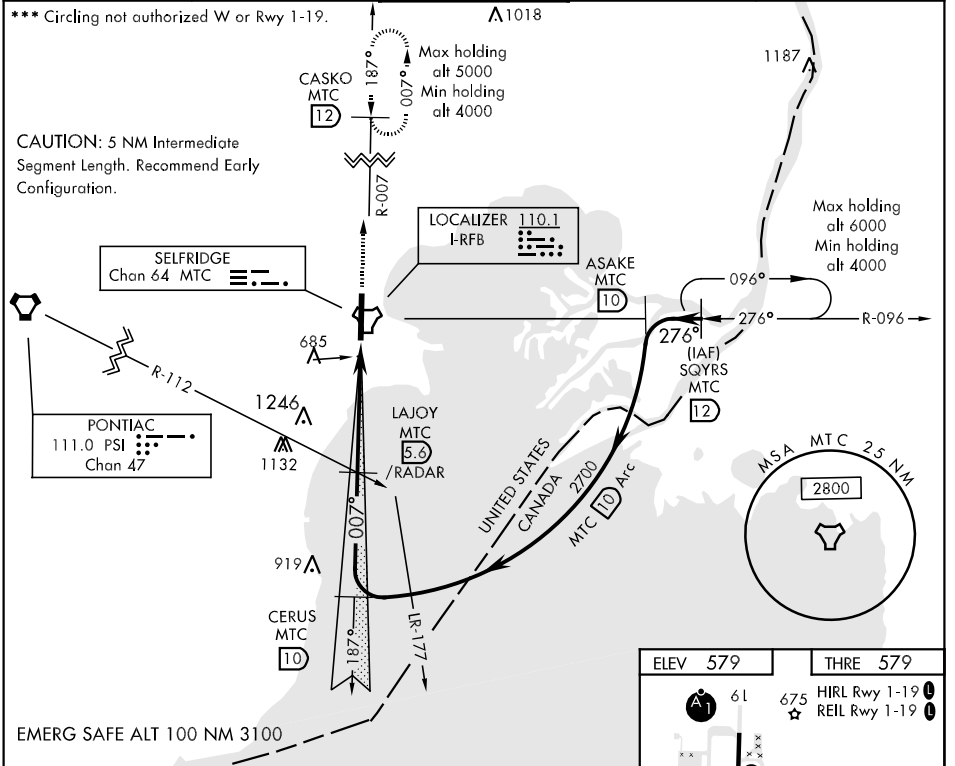
LOC I-RFB <b>110.1</b>	APCH CRS <b>007°</b>	Rwy Idg THRE Arpt Elev <b>9000</b> <b>579</b> <b>579</b>	AL-276 [USAF]	SELFDRIDGE ANGB (KMTC)
---------------------------	-------------------------	---	---------------	------------------------

▼ \* When ALS inop, increase RVR to 50, vis to 1 mile.  
▼ \*\* When ALS inop, increase CAT AB RVR to 55 and vis to 1 mile CAT CDE vis to 1½ miles.

SALS  
**A2**

MISSED APPROACH: Climb to 4000 on MTC R-007 to CASKO and hold, continue climb-in-hold to 4000.

ATIS <b>125.325 270.1</b>	SELFDRIDGE APP CON <b>119.6 318.2</b>	SELFDRIDGE TOWER ★ <b>120.15 (CTAF) 225.4</b>	GND CON <b>128.3 275.8</b>	CLNC DEL <b>119.0 259.95</b>
------------------------------	--	--	-------------------------------	---------------------------------



ELEV 579	THRE 579
<b>A1</b>	61 675 HIRL Rwy 1-19 ★ REIL Rwy 1-19
<b>A2</b>	007° 4.9 NM from FAF
FAF to MAP 4.9 NM	
Knots	60 90 120 150 180
Min:Sec	4:54 3:16 2:27 1:58 1:38

CATEGORY	A	B	C	D	E
S-ILS 01*	907/40		328	(400-¾)	
S-LOC 01**	1060/40	481 (500-¾)	1060/60	481 (500-1½)	
CIRCLING ***	1120-1	541 (600-1)	1120-1½ 541 (600-1½)	1140-2	561 (600-2)

MT. CLEMENS, MICHIGAN  
Amdt 3 23AUG12

42°36'N-82°50'W

SELFDRIDGE ANGB (KMTC)

# ILS or LOC/DME RWY 1

EC-1, 07 FEB 2013 to 07 MAR 2013

EC-1, 07 FEB 2013 to 07 MAR 2013