

MONTGOMERY, ALABAMA

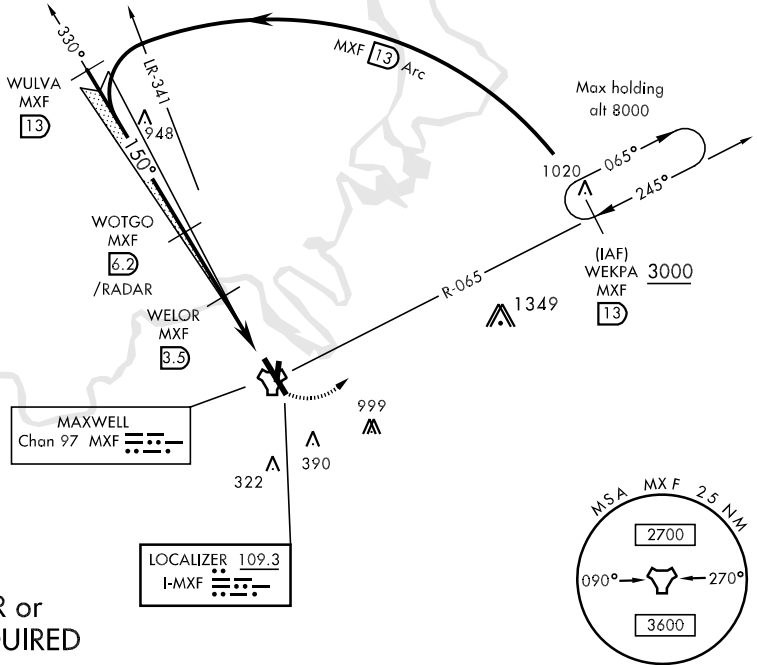
ILS or LOC/DME RWY 15

MAXWELL AFB (KMXF)

LOC I-MXF 109.3	APCH CRS 150°	Rwy Idg 8013 THRE 171 Arpt Elev 171	AL-274 [USAF]	ALSF-1	MISSED APPROACH: Climb to 1000 then climbing left turn to 3000 direct WEKPA and hold.
* When ALS inop, increase RVR to 40 and vis to 3/4 mile. ** When ALS inop, increase RVR all CAT to 55 and vis to 1 mile. *** Circling not authorized E of Rwy 15-33.				(A1)	

ATIS ★ 134.7 269.9	MONTGOMERY APP CON 121.2 269.05	MAXWELL TOWER ★ 118.15 253.5	GND CON 127.15 289.4
------------------------------	---	--	--------------------------------

Missed Approach requires ATC RADAR monitoring.



RADAR or DME REQUIRED

EMERG SAFE ALT 100 NM 5100

† LOC only WULVA 13 WOTGO/RADAR 6.2 † WELOR 3.5 WODUM 1.2 TACAN GS 3.00° TCH 51 3000 2000 1100 2.7 NM, 2.3 NM, 1.5 NM	ELEV 171	THRE 171			
	WEKPA R-065 13 150° 5.5 NM from FAF ASSAULT LANDING ZONE 301.5 x 200 007° 187° 301.3 x 150 260, 264, 246 HIRL Rwy 15-33				
CATEGORY	A	B	C	D	E
S-ILS 15★	371/24		200	(200-1/2)	
S-LOC 15★★	540/24	369 (400-1/2)	540/35	369 (400-3/4)	
CIRCLING★★★	680-1	509 (600-1)	680-1 1/2	740-2	NA
			509 (600-1 1/2)	569 (600-2)	

MONTGOMERY, ALABAMA
Amdt 3 26JUL12

32°23'N-86°22' W

MAXWELL AFB (KMXF)

ILS or LOC/DME RWY 15

SE-4, 07 FEB 2013 to 07 MAR 2013

SE-4, 07 FEB 2013 to 07 MAR 2013