

WAAS CH <b>56200</b> <b>W28A</b>	APP CRS <b>277°</b>	Rwy Idg THRE <b>193</b> Apt Elev <b>221</b>	<b>9020</b>
--	------------------------	---	-------------

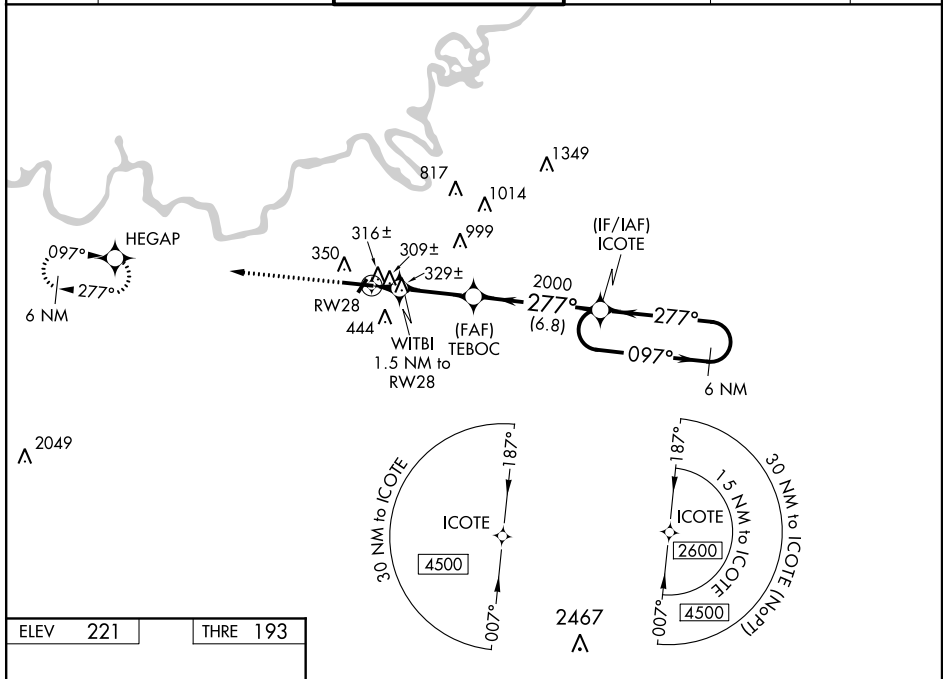
# RNAV (GPS) RWY 28

MONTGOMERY RGNL (DANNELLY FIELD) (MGM)

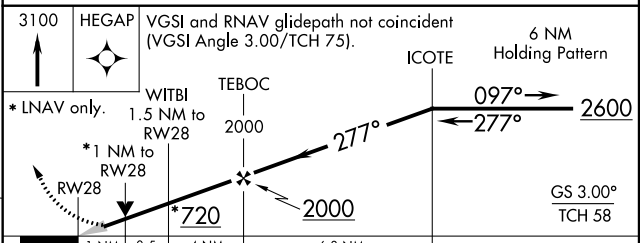
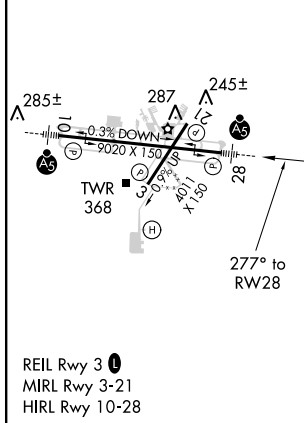
**ASR** Circling for Cat E NA north of Rwy 10-28. Circling to Rwy 21 NA at night. When VGSI inoperative, Circling Rwy 03 NA at night. DME/DME RNP-0.3 NA. For uncompensated Baro-VNAV systems, LNAV/VNAV NA below -15°C (5°F) or above 42°C (107°F). For inoperative MALSR, increase LPV Cat E visibility to ¾ mile, LNAV/VNAV Cat E visibility to 1 ¾ miles, and LNAV Cat E visibility to 1 ½ miles.

**MALSR** MISSED APPROACH: Climb to 3100 direct HEGAP and hold.

ATIS <b>120.675</b>	MONTGOMERY APP CON * <b>121.2 269.05</b>	DANNELLY TOWER * <b>119.7 (CTAF) 0 360.85</b>	GND CON <b>121.7 348.6</b>	CLNC DEL <b>118.3 270.3</b>	UNICOM <b>122.95</b>
------------------------	---	--	-------------------------------	--------------------------------	-------------------------



ELEV <b>221</b>	THRE <b>193</b>
-----------------	-----------------



CATEGORY	A	B	C	D	E
LPV DA		393-1/2	200 (200-1/2)		
LNAV/VNAV DA		610-7/8	417 (400-7/8)		
LNAV MDA	580-1/2	387 (400-1/2)	580-5/8	387 (400-5/8)	
CIRCLING	700-1	479 (500-1)	700-1 1/2 479 (500-1 1/2)	800-2	579 (600-2)

# RNAV (GPS) RWY 28

SE-4, 07 FEB 2013 to 07 MAR 2013

SE-4, 07 FEB 2013 to 07 MAR 2013