

WAAS CH 50100 W10A	APP CRS 097°	Rwy Idg THRE 218 Apt Elev 221	9020
--	------------------------	---	-------------

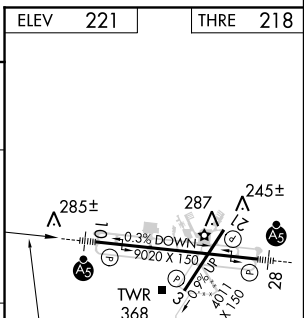
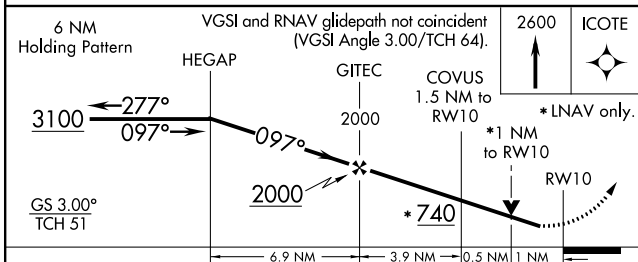
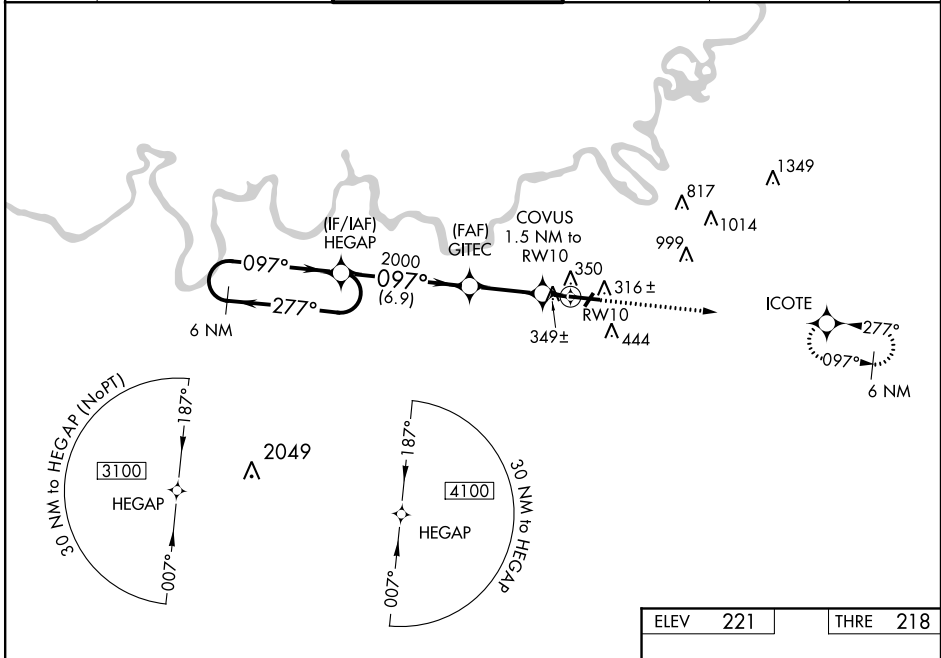
RNAV (GPS) RWY 10

MONTGOMERY RGNL (DANNELLY FIELD) (MGM)

ASR Circling for Cat E NA north of Rwy 10-28. Circling to Rwy 21 NA at night. When VGSI inop, Circling Rwy 03 NA at night. For inoperative MALSR increase LNAV/VNAV all Cats visibility to 1 3/8 miles, LNAV/Cats A/B visibility to RVR 5500, and LNAV/Cats C/D/E visibility to RVR 6000. DME/DME RNP-0.3 NA. For uncompensated Baro-VNAV systems, LNAV/VNAV NA below -1.5°C (5°F) or above 42°C (107°F). Visibility reduction by helicopters NA. Inoperative table does not apply to LPV.

MALSR MISSED APPROACH: Climb to 2600 direct ICOTE and hold.

ATIS 120.675	MONTGOMERY APP CON ★ 121.2 269.05	DANNELLY TOWER ★ 119.7 (CTAF) 360.85	GND CON 121.7 348.6	CLNC DEL 118.3 270.3	UNICOM 122.95
------------------------	---	--	-------------------------------	--------------------------------	-------------------------



CATEGORY	A	B	C	D	E
LPV DA		418/40	200 (200-3/4)		
LNAV/VNAV DA		641/40	423 (500-3/4)		
LNAV MDA		600/40	382 (400-3/4)		
CIRCLING	700-1	479 (500-1)	700-1 1/2 479 (500-1 1/2)	800-2	579 (600-2)

ELEV 221 THRE 218

REIL Rwy 3
MIRL Rwy 3-21
HIRL Rwy 10-28

SE-4, 07 FEB 2013 to 07 MAR 2013

SE-4, 07 FEB 2013 to 07 MAR 2013