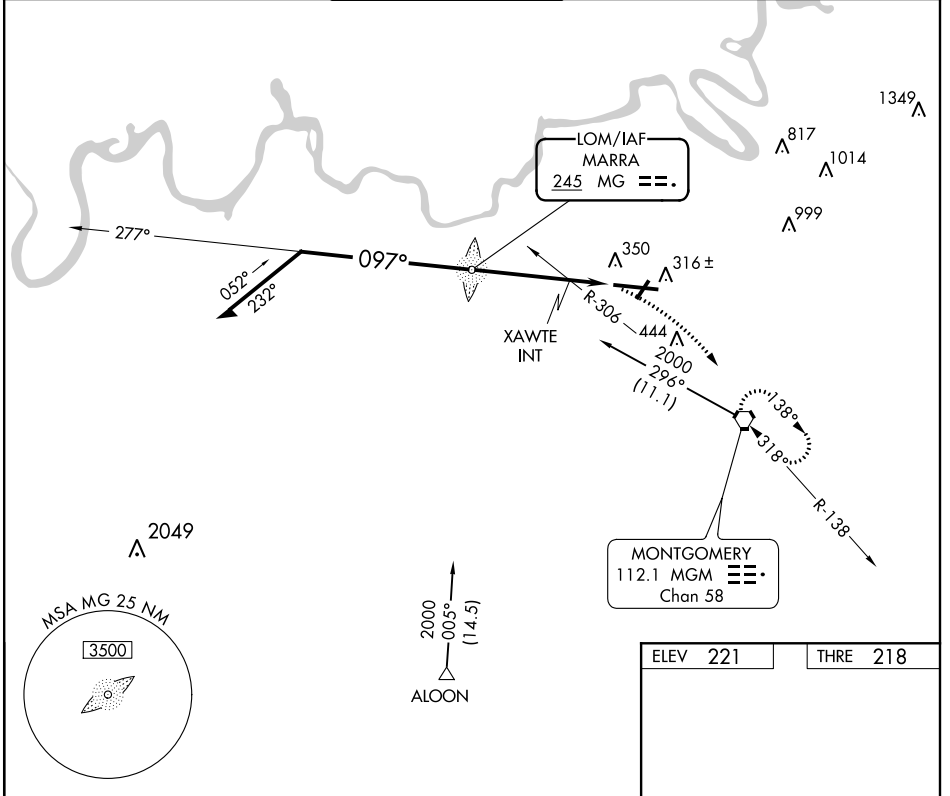


LOM MG <b>245</b>	APP CRS <b>097°</b>	Rwy Idg <b>9020</b> THRE <b>218</b> Apt Elev <b>221</b>
----------------------	------------------------	--

# NDB RWY 10

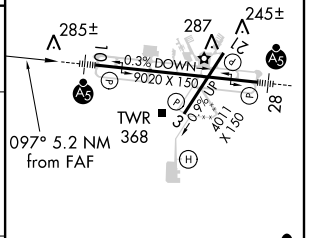
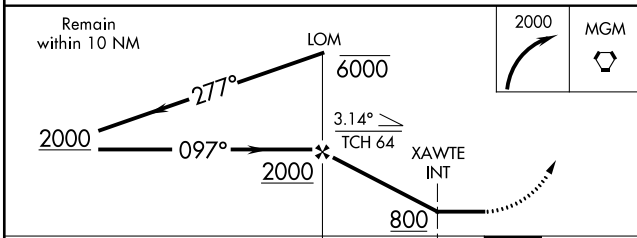
MONTGOMERY RGNL (DANNELLY FIELD) (MGM)

<p><b>▽</b> For inoperative MALSR increase S-10 Cats A/B visibility to RVR 5500, and Cats C/D visibility to 1½ mile. Visibility reduction by helicopters NA. Circling Rwy 21 NA at night. When VGSI inoperative, circling Rwy 03 NA at night.</p>	<p>MALSR </p>	<p>MISSED APPROACH: Climbing right turn to 2000 direct MGM VORTAC and hold.</p>	
<p>ATIS <b>120.675</b></p>	<p>MONTGOMERY APP CON * <b>121.2 269.05</b></p>	<p>DANNELLY TOWER * <b>119.7 (CTAF) 360.85</b></p>	<p>GND CON <b>121.7 348.6</b></p>
<p>CLNC DEL <b>118.3 270.3</b></p>		<p>UNICOM <b>122.95</b></p>	



SE-4, 07 FEB 2013 to 07 MAR 2013

SE-4, 07 FEB 2013 to 07 MAR 2013



CATEGORY	A	B	C	D
S-10	660/40	442 (500-¾)	660/45	442 (500-⅞)
CIRCLING	700-1	479 (500-1)	700-1½ 479 (500-1½)	800-2 579 (600-2)

REIL Rwy 3		MIRL Rwy 3-21		HIRL Rwy 10-28	
FAF to MAP 5.2 NM					
Knots	60	90	120	150	180
Min:Sec	5:12	3:28	2:36	2:05	1:44