

LOC I-DLV	APP CRS	Rwy Idg	9020
108.5	277°	THRE	193
		Apt Elev	221

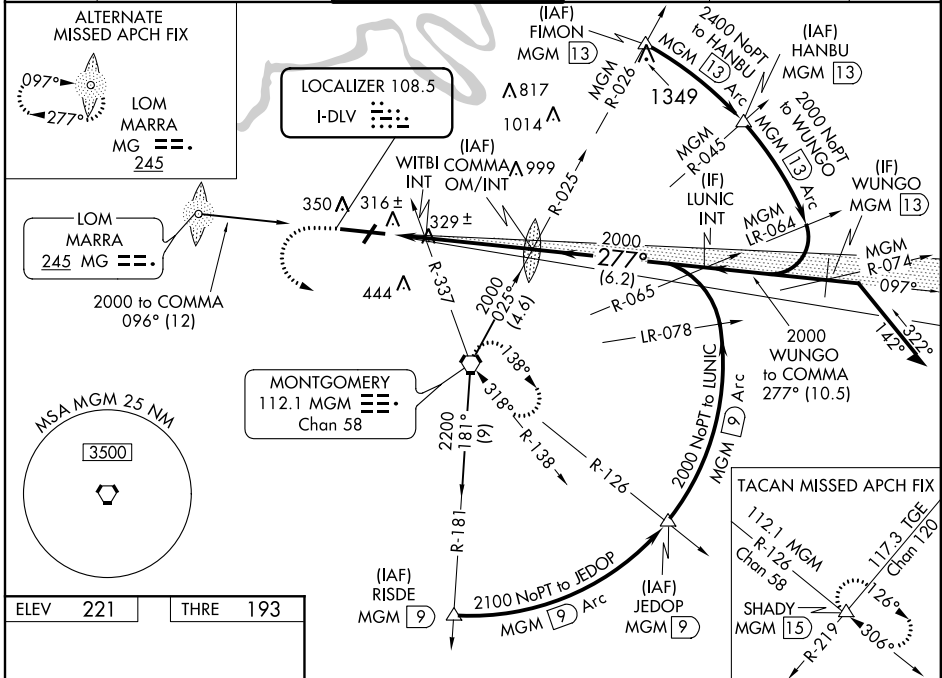
ILS or LOC RWY 28

MONTGOMERY RGNL (DANNELLY FIELD) (MGM)

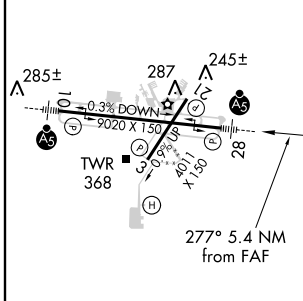
ASR Circling NA for Cat E north of Rwy 10-28. For inop MALSR increase S-ILS 28 Cat E visibility to 3/4 mile, S-LOC 28 Cats C/D/E visibility to 1 3/8 mile, and WITBI fix minimum S-LOC Cat E visibility to 1 1/4 mile. Circling to Rwy 21 NA at night. When VGSI inop, Circling Rwy 03 NA at night.

MALSR MISSED APPROACH: Climb to 700 then climbing left turn to 3000 direct MGM VORTAC and hold, continue climb-in-hold to 3000 (TACAN aircraft continue climb to 3500 on MGM VORTAC R-126 to SHADY INT and hold southeast, right turn, 306° inbound).

ATIS	MONTGOMERY APP CON *	DANNELLY TOWER *	GND CON	CLNC DEL	UNICOM
120.675	121.2 269.05	119.7 (CTAF) 360.85	121.7 348.6	118.3 270.3	122.95



ELEV	221	THRE	193
------	-----	------	-----



REIL Rwy 3
MIRL Rwy 3-21
HIRL Rwy 10-28

FAF to MAP 5.4 NM

Knots	60	90	120	150	180
Min:Sec	5:24	3:36	2:42	2:10	1:48

700	3000	MGM	*LOC only.	COMMA INT/OM	Remain within 15 NM
VGSI and ILS glidepath not coincident (VGSI Angle 3.00/TCH 75).				6000	097°
				1982	277°
				2000	2000
				700*	GS 3.00° TCH 58
				1.5 NM	3.9 NM

CATEGORY	A	B	C	D	E
S-ILS 28	393-1/2 200 (200-1/2)				
S-LOC 28	700-1/2	507 (500-1/2)	700-1 507 (500-1)		
CIRCLING	700-1	479 (500-1)	700-1/2 479 (500-1/2)	800-2 579 (600-2)	
WITBI FIX MINIMUMS					
S-LOC 28	620-1/2	427 (400-1/2)	620-3/4 427 (400-3/4)		
CIRCLING	700-1	479 (500-1)	700-1/2 479 (500-1/2)	800-2 579 (600-2)	

ILS or LOC RWY 28

SE-4, 07 FEB 2013 to 07 MAR 2013

SE-4, 07 FEB 2013 to 07 MAR 2013