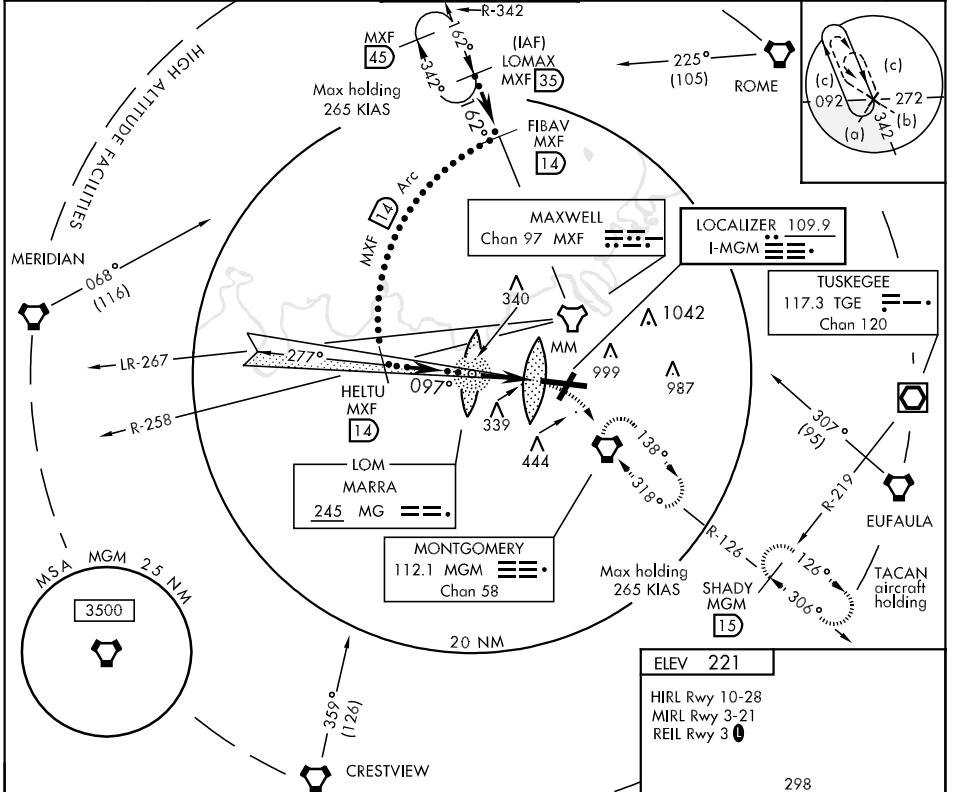


LOC I-MGM 109.9	APCH CRS 097°	Rwy Idg TDZE Arpt Elev 9010 219 221	JAL-272 [USAF]
MONTGOMERY REGIONAL (DANNELLY FIELD) (KMGM)			

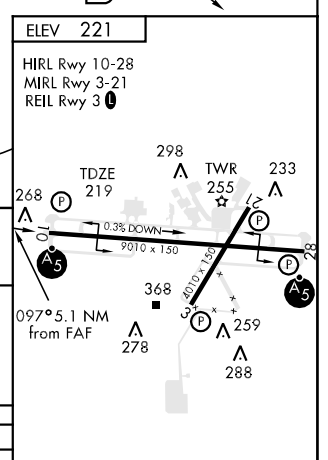
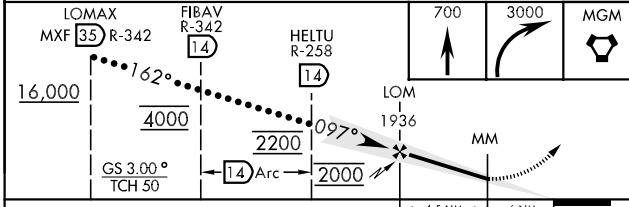
▼ * For inop MALSRS incr vis all CATs to RVR 40.
 ** For inop MALSRS, incr CAT C vis to RVR 50, CAT DE RVR 60.
 *** Circling not authorized for CAT E N of Rwy 10-28.

MALSRS MISSED APPROACH: Climb to 700 then climbing right turn to 3000 direct MGM VORTAC and hold. TACAN aircraft continue to 3500 via MGM R-126 to SHADY INT.

ATIS ★ 120.675	MONTGOMERY APP CON 121.2 380.225 N 124.0 363.025 S	MONTGOMERY TOWER ★ 119.7 (CTAF) 0360.85	GND CON 121.7 348.6	CLNC DEL 118.3 270.3	ASR ASOS
--------------------------	--	--	-------------------------------	--------------------------------	----------



EMERG SAFE ALT 100 NM
5000 FROM "MGM" VORTAC



CATEGORY	C	D	E
S-ILS 10*		419/24 200 (200-½)	
S-LOC 10**		600/40 381 (400-¾)	
CIRCLING ***	700-1½ 479 (500-1½)	800-2 579 (600-2)	

FAF to MAP 4.5 NM					
Knots	120	140	160	180	200
Min:Sec	2:15	1:56	1:41	1:30	1:21

SE-4, 07 FEB 2013 to 07 MAR 2013

SE-4, 07 FEB 2013 to 07 MAR 2013