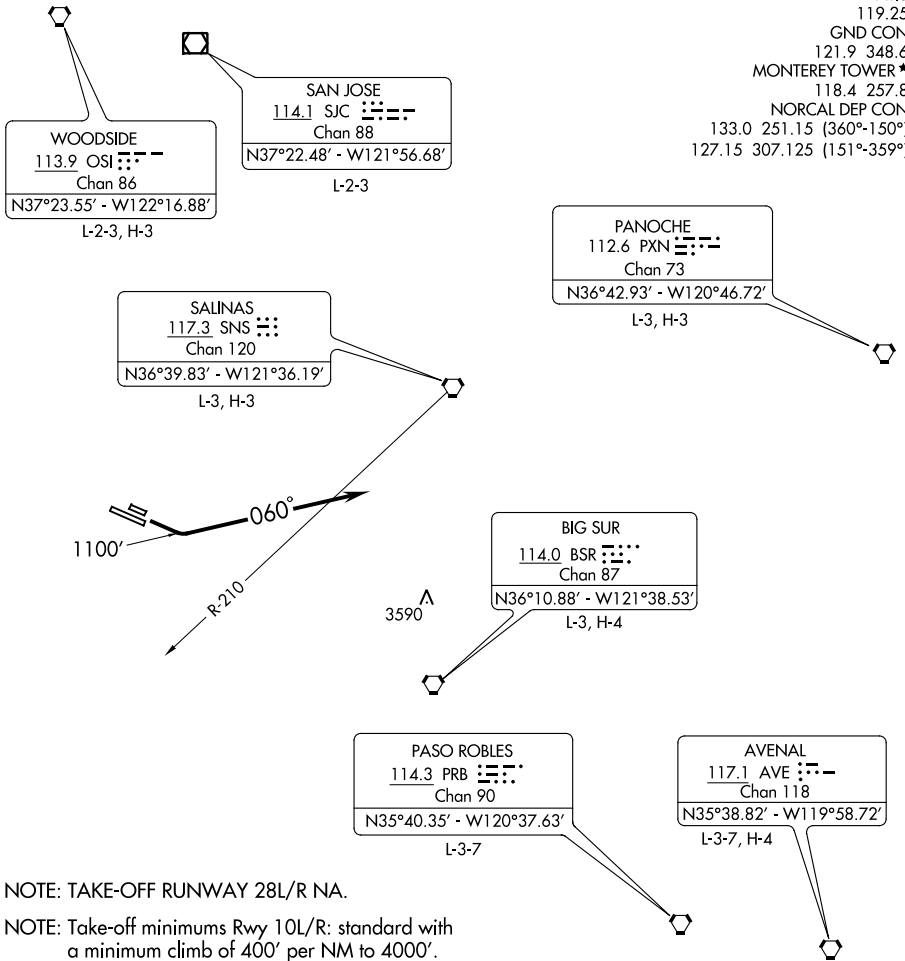


TORO FIVE DEPARTURE

SL-271 (FAA)

MONTEREY PENINSULA (MRY)
MONTEREY, CALIFORNIA



NOTE: Chart not to scale.

DEPARTURE ROUTE DESCRIPTION

TAKE-OFF RUNWAY 10L/R: Climb runway heading to 1100', then climbing left turn heading 060°. Expect vectors to filed route after passing SNS R-210. Maintain 6000' or assigned higher altitude. Expect clearance to filed altitude ten minutes after departure.

LOST COMMUNICATIONS: If no transmissions are received within one minute after departure climb direct SNS VORTAC, then via assigned fix/route. Maintain 6,000' or assigned higher altitude.