

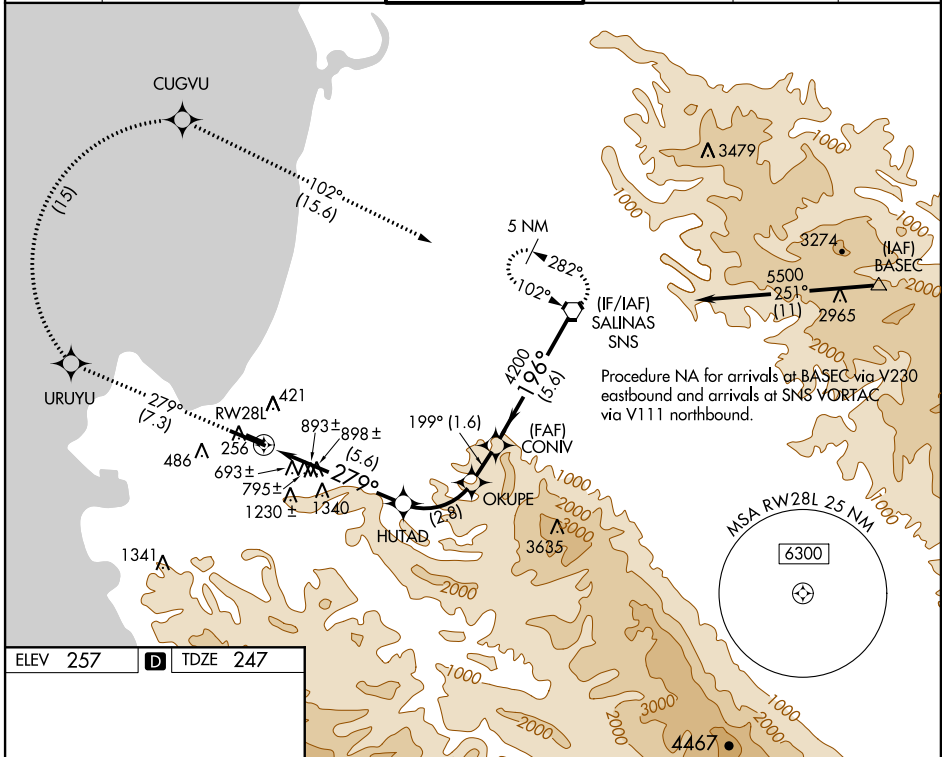
APP CRS	Rwy Idg	6616
279°	TDZE	247
	Apt Elev	257

RNAV (RNP) Z RWY 28L

MONTEREY PENINSULA (MRY)

RF and GPS required. When VGSI inoperative, RNP 0.30 DA NA at night.
MISSED APPROACH: Climb to 5500 via 279° track to URUYU and via right turn to CUGVU and via 102° track to SNS VORTAC and hold.

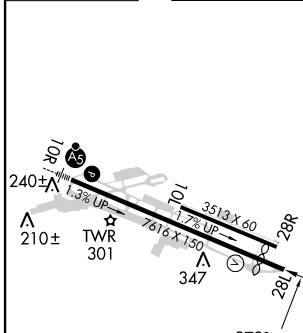
ATIS 119.25	NORCAL APP CON 133.0 251.15 (360°-150°) 127.15 307.125 (151°-359°)	MONTEREY TOWER* 118.4 (CTAF) 0257.8	GND CON 121.9 348.6	CLNC DEL 135.45	UNICOM 122.95
-----------------------	--	--	-------------------------------	---------------------------	-------------------------



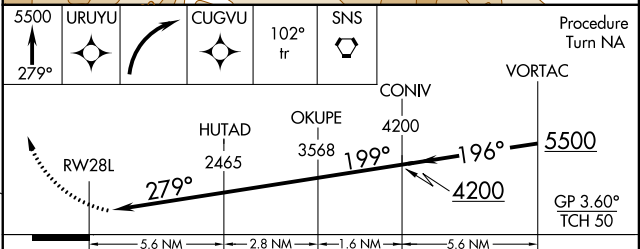
SW-2, 07 FEB 2013 to 07 MAR 2013

SW-2, 07 FEB 2013 to 07 MAR 2013

ELEV 257	D	TDZE 247
----------	----------	----------



MIRL Rwy 10L-28R
 HIRL Rwy 10R-28L
 REIL Rwy 28L



CATEGORY	A	B	C	D
RNP 0.10 DA	497/40	250 (300-3/4)		NA
RNP 0.20 DA	1196-2 3/4	949 (1000-2 3/4)		NA
RNP 0.30 DA	1257-3	1010 (1000-3)		NA

AUTHORIZATION REQUIRED