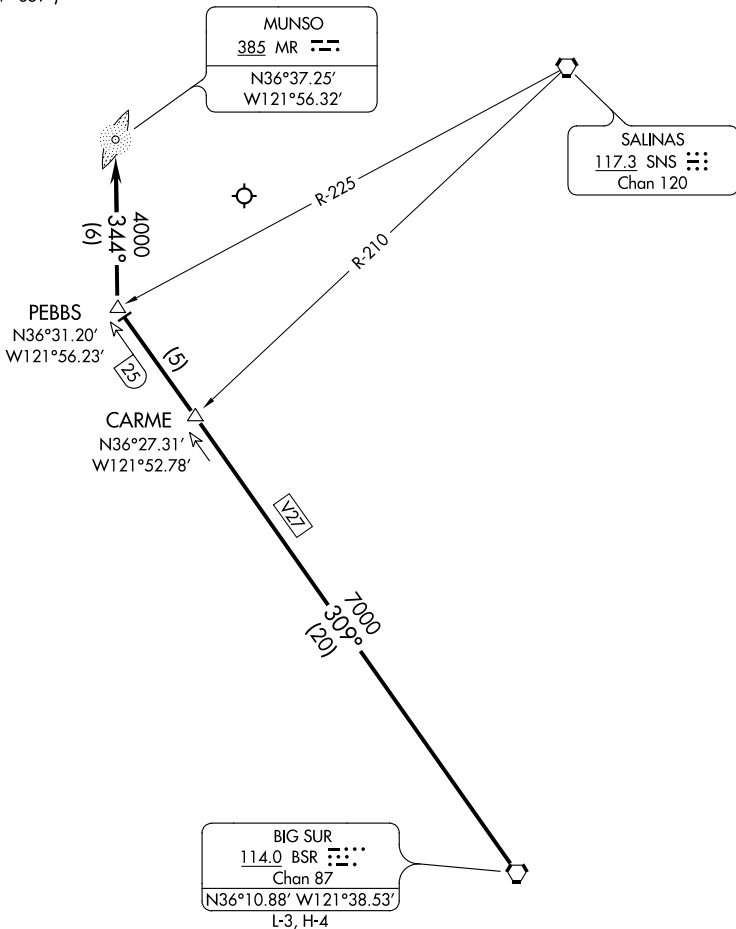


PEBBS ONE ARRIVAL

ST-271 (FAA)

MONTEREY PENINSULA
MONTEREY, CALIFORNIA

ATIS
119.25
NORCAL APP CON
133.0 251.15 (360°-150°)
127.15 307.125 (151°-359°)
OAKLAND CENTER
128.7 307.0



SW-2, 07 FEB 2013 to 07 MAR 2013

SW-2, 07 FEB 2013 to 07 MAR 2013

NOTE: ADF required

From over BSR VORTAC via BSR R-309 to PEBBS Int/DME Fix, thence via 344° course to MUNSO LOM. Expect ILS Runway 10R Approach.