

LOC/DME I-MTB 110.7 Chan 44	APP CRS 278°	Rwy Idg TDZE Apt Elev	6616 245 254
--	------------------------	-----------------------------	---

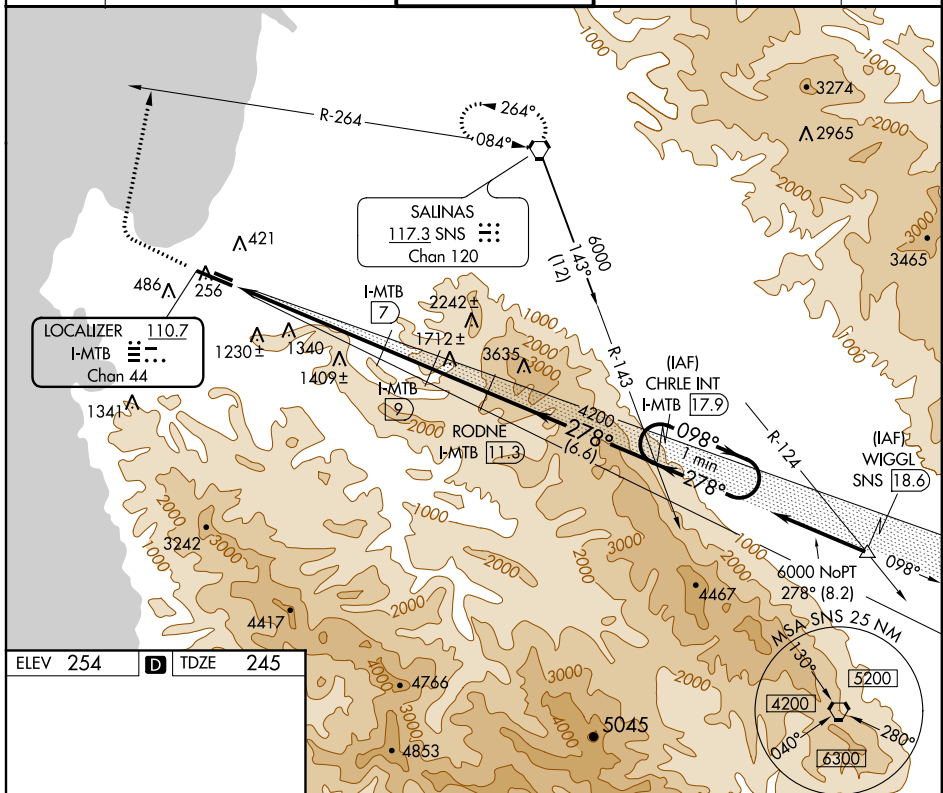
LOC/DME RWY 28L

MONTEREY PENINSULA (MRY)

⚠ Circling not authorized south of Rwy 28L.
⚠ Procedure NA when control tower closed.

MISSED APPROACH: Climb straight ahead to 3000 then climbing right turn to 5000 via heading 360° and SNS R-264 to SNS VORTAC and hold.

ATIS 119.25	NORCAL APP CON 133.0 251.15 (360°-150°) 127.15 307.125 (151°-359°)	MONTEREY TOWER ★ 118.4 (CTAF) 0 257.8	GND CON 121.9 348.6	CLNC DEL 135.45	UNICOM 122.95
-----------------------	--	--	-------------------------------	---------------------------	-------------------------



SW-2, 07 FEB 2013 to 07 MAR 2013

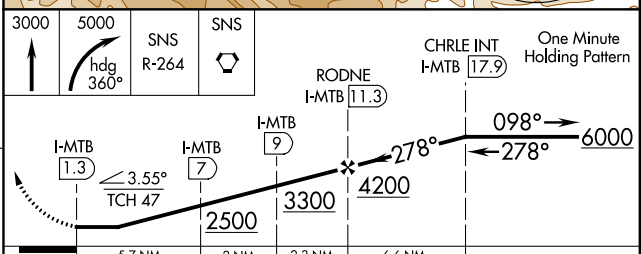
SW-2, 07 FEB 2013 to 07 MAR 2013

ELEV 254	D	TDZE 245
----------	----------	----------

The profile view shows the vertical clearance of RWY 28L. Key data points include:

- Obstacle 1:** 240± ft, 1.0 NM from FAF, 1.3% UP.
- Obstacle 2:** 210± ft, 1.3 NM from FAF.
- Obstacle 3:** 347 ft, 1.7 NM from FAF.
- Obstacle 4:** 3513 ft, 6.0 NM from FAF.
- Obstacle 5:** 7616 ft, 15.0 NM from FAF.
- Obstacle 6:** 288 ft, 2.8 NM from FAF.
- Obstacle 7:** 278 ft, 10 NM from FAF.

MIRL Rwy 10L-28R
 HIRL Rwy 10R-28L
 REIL Rwy 28L



CATEGORY	A	B	C	D
S-28L	1660-1¼ 1415 (1500-1¼)	1660-1½ 1415 (1500-1½)	1660-3	1415 (1500-3)
CIRCLING	1660-1¼ 1406 (1500-1¼)	1660-1½ 1406 (1500-1½)	1660-3	1406 (1500-3)