

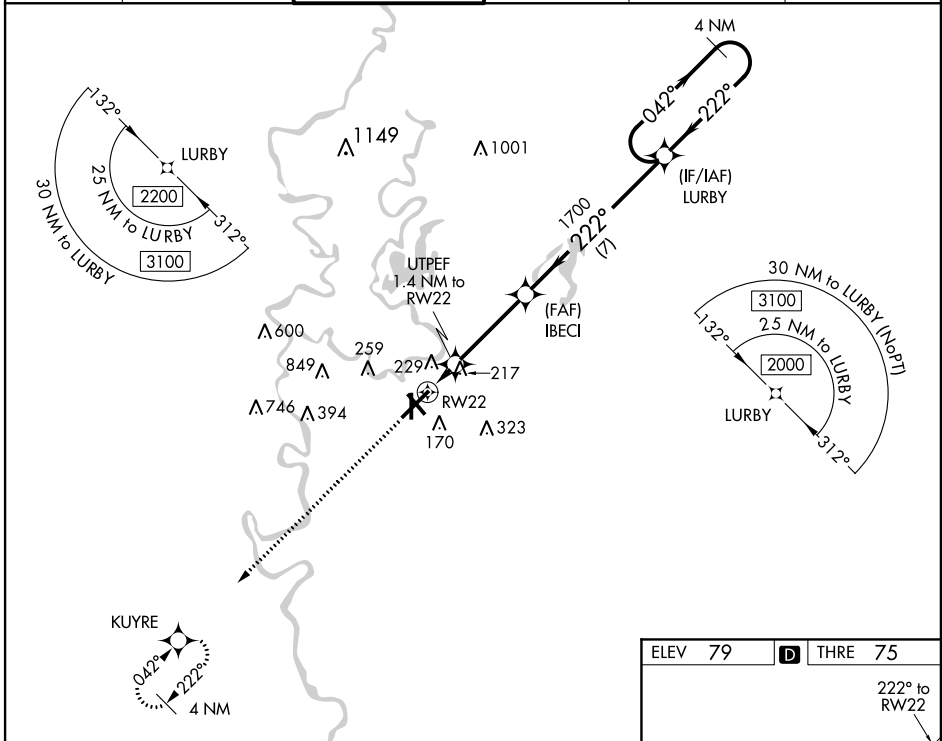
WAAS CH 70510 W22A	APP CRS 222°	Rwy Idg THRE 75 Apt Elev 79
--	------------------------	--

RNAV (GPS) RWY 22

MONROE RGNL (MLU)

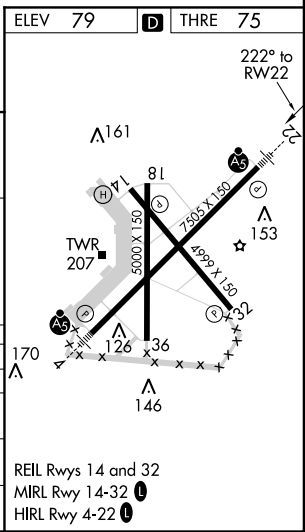
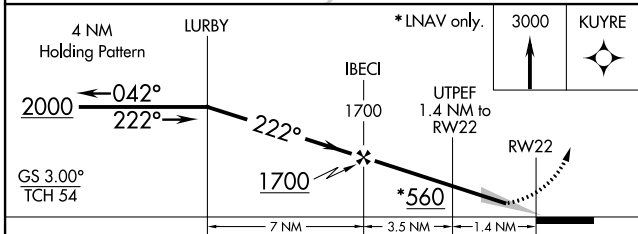
	For uncompensated Baro-VNAV systems, LNAV/VNAV NA below -15°C (5°F) or above 54°C (130°F). DME/DME RNP-0.3 NA.		MISSED APPROACH: Climb to 3000 direct KUYRE and hold.
	(ASR and MALSR symbols)		

ATIS 125.05	MONROE APP CON * 126.9 307.9	MONROE TOWER * 118.9 (CTAF) 0 257.8	GND CON 121.9	CLNC DEL 121.65	UNICOM 122.95
-----------------------	--	---	-------------------------	---------------------------	-------------------------



SC-4, 07 FEB 2013 to 07 MAR 2013

SC-4, 07 FEB 2013 to 07 MAR 2013



CATEGORY	A	B	C	D
LPV DA		275-1/2	200 (200-1/2)	
LNAV/VNAV DA		390-1/2	315 (400-1/2)	
LNAV MDA	480-1/2	405 (500-1/2)	480-3/4	405 (500-3/4)
CIRCLING	580-1	501 (600-1)	620-1 1/2 541 (600-1 1/2)	640-2 561 (600-2)