


WAAS CH 86824 W27A	APP CRS 270°	Rwy Idg THRE 574 Apt Elev 590
--	------------------------	--

RNAV (GPS) RWY 27

MOLINE / QUAD CITY INTL (MLI)

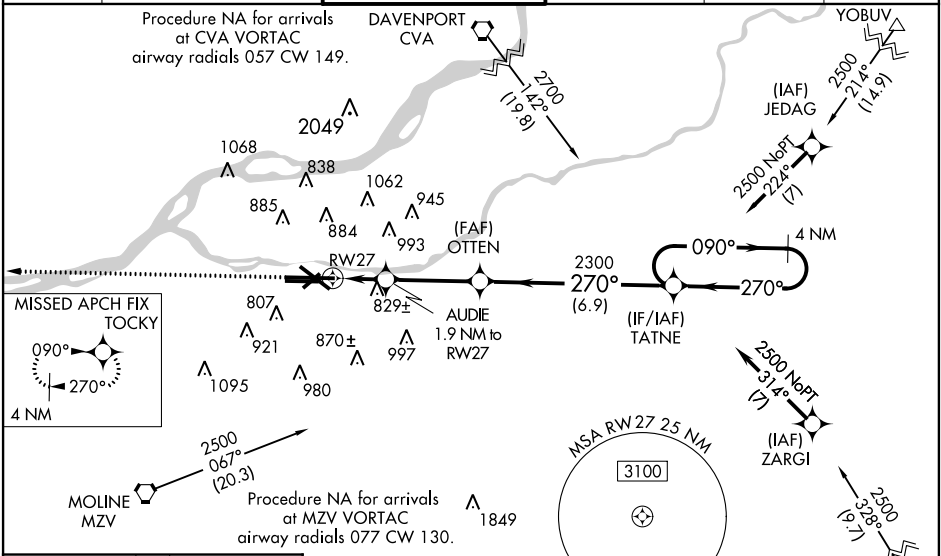
⚠ When VGSI inop, Circling Rwy 05 NA at night. Baro-VNAV NA when using Davenport altimeter setting. For uncompensated Baro-VNAV systems, LNAV/VNAV NA below -26°C (-14°F) or above 40°C (104°F). DME/DME RNP-0,3 NA. When local altimeter setting not received, use Davenport altimeter setting: increase all DA 47 feet and LNAV/VNAV visibility all Cats ½ mile; increase all MDA 60 feet and visibility, Cats C and D ¼ mile, Circling visibility Cats C and D ¼ mile. For inoperative MALSRL, increase LNAV/VNAV visibility all Cats to 2 miles, LNAV visibility Cats C and D to 1½ mile. When using Davenport altimeter increase LNAV visibility Cats C and D to 1½ mile.

MALSRL



MISSED APPROACH:
Climb to 2300 direct
TOCKY and hold.

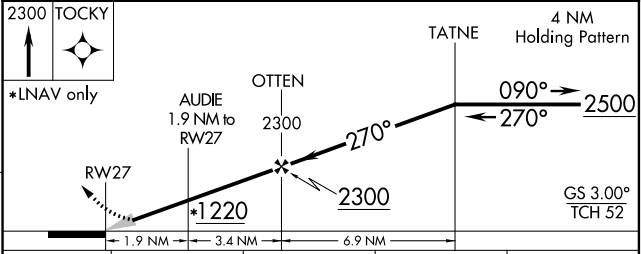
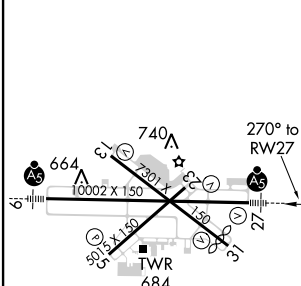
ATIS 121.2	QUAD CITY APP CON * 125.95 257.8	QUAD CITY TOWER * 119.4(CTAF) 269.55	GND CON 121.9 257.8	CLNC DEL 124.05	UNICOM 122.95
----------------------	--	--	-------------------------------	---------------------------	-------------------------



EC-3, 07 FEB 2013 to 07 MAR 2013

EC-3, 07 FEB 2013 to 07 MAR 2013

ELEV 590	D	THRE 574
----------	----------	----------



CATEGORY	A	B	C	D
LPA DA	774/24		200 (200-½)	
LNAV/VNAV DA	1179-1½		605 (600-1½)	
LNAV MDA	1080/24	506 (500-½)	1080/55	506 (500-1¼)
CIRCLING	1140-1 550 (600-1)	1160-1 570 (600-1)	1160-1½ 570 (600-1½)	1260-2 670 (700-2)

MIRL Rwy 5-23
REIL Rwy 13 and 31
HIRL Rwy 9-27 and 13-31