


WAAS CH <b>70304</b> <b>W32A</b>	APP CRS <b>320°</b>	Rwy Idg TDZE Apt Elev	<b>9618</b> <b>25</b> <b>26</b>
--	------------------------	-----------------------------	---------------------------------------

# RNAV (GPS) RWY 32

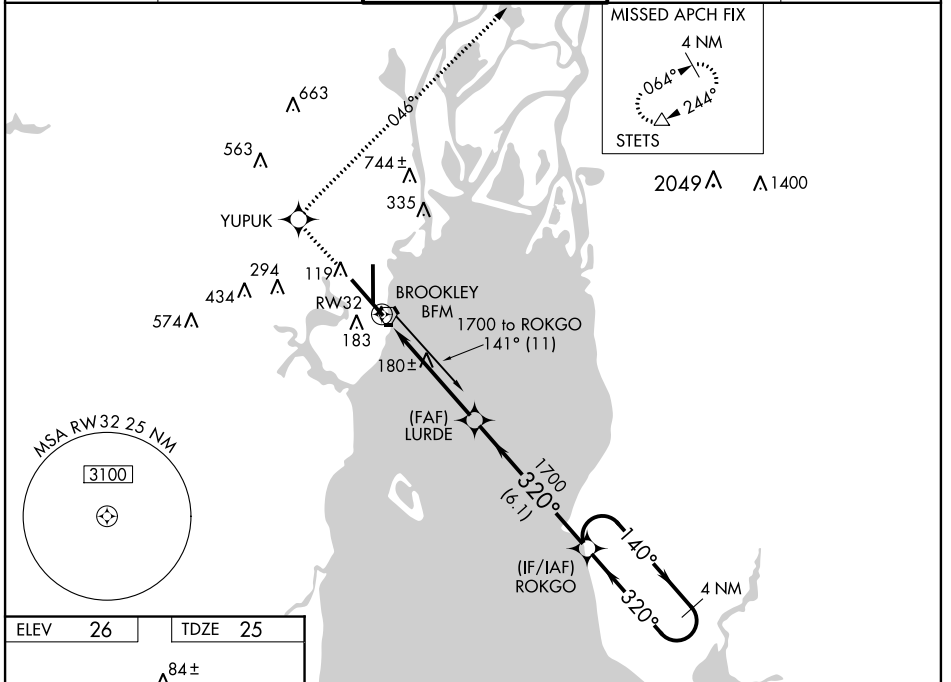
MOBILE DOWNTOWN (BFM)

▼ For uncompensated Baro-VNAV systems, LNAV/VNAV NA below -15°C (5°F) or above 48°C (118°F). DME/DME RNP-0.3 NA. When local altimeter setting not received, use Mobile Rgnl altimeter setting and increase all DA 50 feet and all MDA 60 feet, increase LNAV Cat C visibility to RVR 5000, Cat D to RVR 6000. Baro-VNAV and VDP NA when using Mobile Rgnl altimeter setting.

MALSR 

MISSED APPROACH: Climb to 2000 direct YUPOK and via track 046° to STETS and hold.

ATIS <b>135.575</b>	MOBILE APP CON * <b>118.5 269.3</b>	DOWNTOWN TOWER * <b>118.8 (CTAF) 0 251.1</b>	GND CON <b>121.7 239.3</b>	UNICOM <b>122.95</b>
------------------------	--	---	-------------------------------	-------------------------



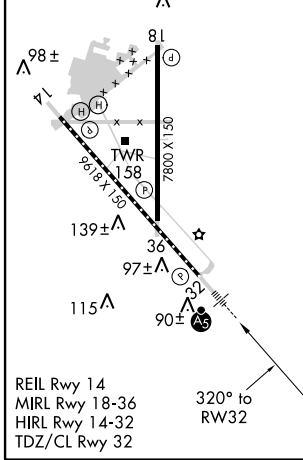
MISSED APCH FIX

4 NM

064° 244°

STETS

ELEV 26	TDZE 25
---------	---------



2000 YUPOK ↑

STETS tr 046° △

VGSI and RNAV glidepath not coincident (VGSI Angle 3.00/TCH 71).

LURDE 1700

ROKGO 1700

4 NM Holding Pattern

\* LNAV only

\* 1.2 NM to RW32

1700 320° 140° 320° 1700

1700 GS 3.00° TCH 55

1.2 NM 3.8 NM 6.1 NM

CATEGORY	A	B	C	D
LPV DA		225/24	200 (200-½)	
LNAV/VNAV DA		368/40	343 (400-¾)	
LNAV MDA	480/24	455 (500-½)	480/40 455 (500-¾)	480/50 455 (500-1)
CIRCLING	520-1	494 (500-1)	520-1½ 494 (500-1½)	580-2 554 (600-2)

SE-4, 07 FEB 2013 to 07 MAR 2013

SE-4, 07 FEB 2013 to 07 MAR 2013