

WAAS CH 97611 W18A	APP CRS 181°	Rwy Idg 7800 TDZE 26 Apt Elev 26
--	------------------------	---

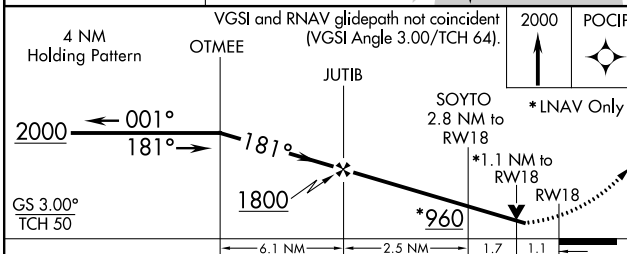
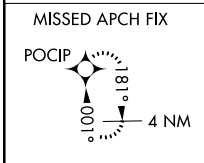
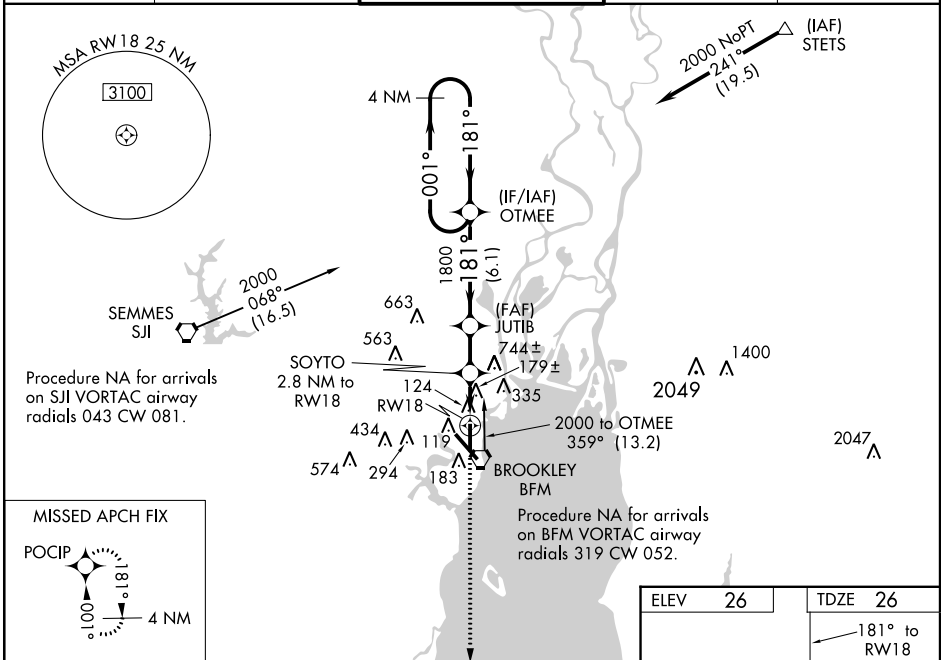
RNAV (GPS) RWY 18

MOBILE DOWNTOWN (BFM)

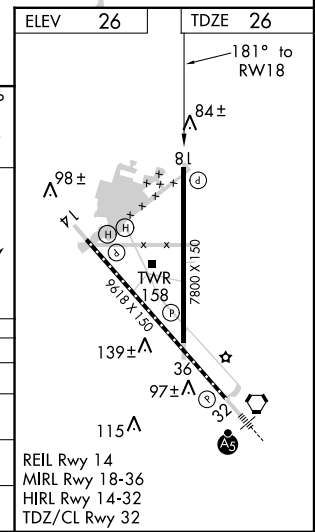
▼ ▲ Straight-in minimums NA at night. For uncompensated Baro-VNAV systems, LNAV/VNAV NA below -15°C (5°F) or above 49°C (120°F). DME/DME RNP-0.3 NA. Visibility reduction by helicopters NA. Baro-VNAV and VDP NA when using Mobile Rgnl altimeter setting. When local altimeter setting not received, use Mobile Rgnl altimeter setting and increase all DA 50 feet and all MDA 60 feet, increase LPV and LNAV/VNAV all Cats., LNAV Cat. D, and Circling Cats. C and D visibility ¼ mile.

MISSED APPROACH:
Climb to 2000 direct POCIP and hold.

ATIS 135.575	MOBILE APP CON * 118.5 269.3	DOWNTOWN TOWER * 118.8 (CTAF) 0 251.1	GND CON 121.7 239.3	UNICOM 122.95
------------------------	--	---	-------------------------------	-------------------------



CATEGORY	A	B	C	D
LPV DA	351-1 325 (400-1)			
LNAV/VNAV DA	397-1¼ 371 (400-1¼)			
LNAV MDA	440-1 414 (500-1)	440-1¼ 414 (500-1¼)		
CIRCLING	680-1 654 (700-1)	680-1¾ 654 (700-1¾)	680-2 654 (700-2)	



SE-4, 07 FEB 2013 to 07 MAR 2013

SE-4, 07 FEB 2013 to 07 MAR 2013