

WAAS CH <b>69306</b> <b>W32A</b>	APP CRS <b>325°</b>	Rwy Idg THRE <b>213</b> Apt Elev <b>219</b>	<b>8502</b>
--	------------------------	---	-------------

# RNAV (GPS) RWY 32

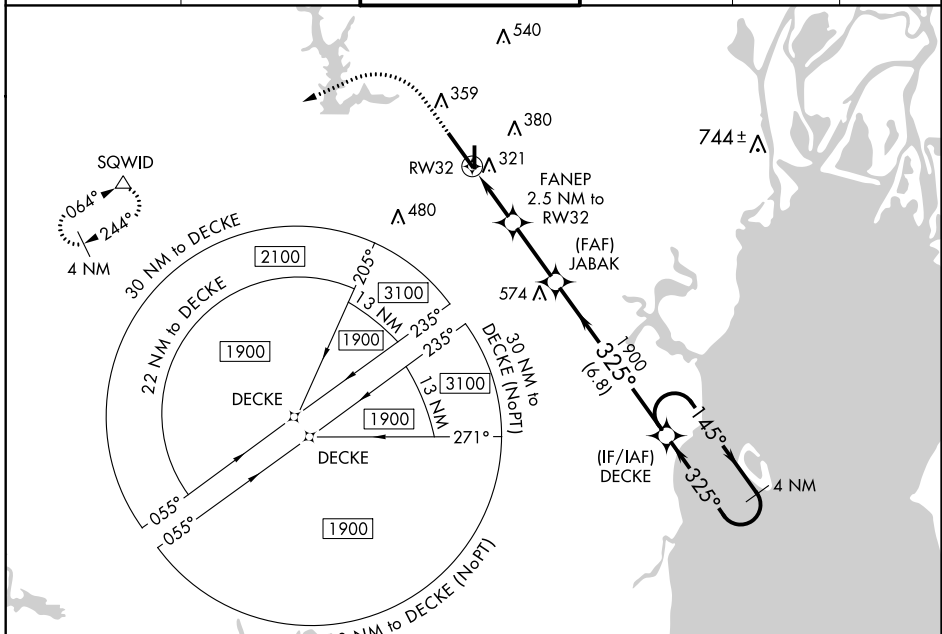
MOBILE RGNL (MOB)

For uncompensated Baro-VNAV systems, LNAV/VNAV NA below -4°C (25°F) or ASR above 42°C (107°F). DME/DME RNP-0.3 NA. For inoperative MALSR, increase LNAV/VNAV all Cats visibility RVR 4500 and LNAV all Cats visibility to RVR 5500.



MISSED APPROACH: Climb to 700 then climbing left turn to 2000 direct SQWID and hold.

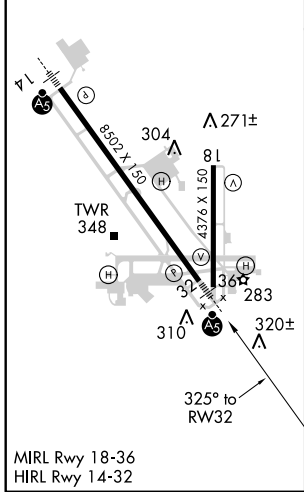
ATIS <b>124.75 257.85</b>	MOBILE APP CON * <b>118.5 269.3</b>	MOBILE TOWER * <b>118.3 (CTAF) 0 239.0</b>	GND CON <b>121.9 348.6</b>	CLNC DEL <b>119.85</b>	UNICOM <b>122.95</b>
------------------------------	--	---	-------------------------------	---------------------------	-------------------------



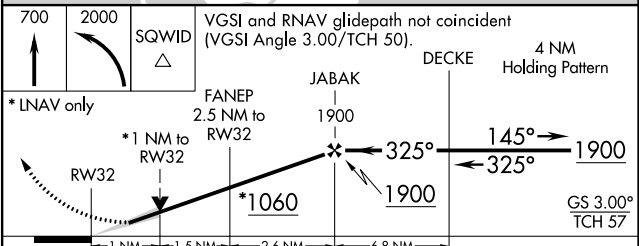
SE-4, 07 FEB 2013 to 07 MAR 2013

SE-4, 07 FEB 2013 to 07 MAR 2013

ELEV 219	THRE 213
----------	----------



MIRL Rwy 18-36  
HIRL Rwy 14-32



CATEGORY	A	B	C	D
LPV DA		413/24	200 (200-½)	
LNAV/VNAV DA		482/24	269 (300-½)	
LNAV MDA	580/24	367 (400-½)	580/35	367 (400-¾)
CIRCLING	680-1	461 (500-1)	680-1½ 461 (500-1½)	780-2 561 (600-2)