

LOC I-MOB <b>109.9</b>	APP CRS <b>145°</b>	Rwy Idg <b>8502</b>
		THRE <b>213</b>
		Apt Elev <b>219</b>

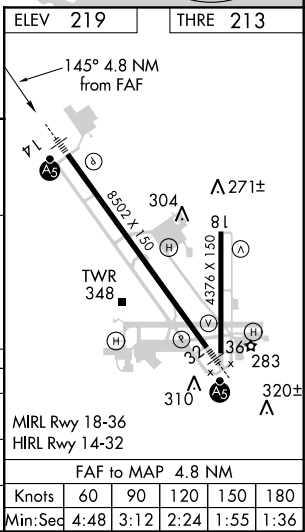
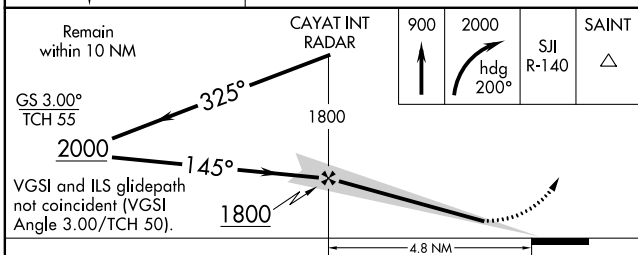
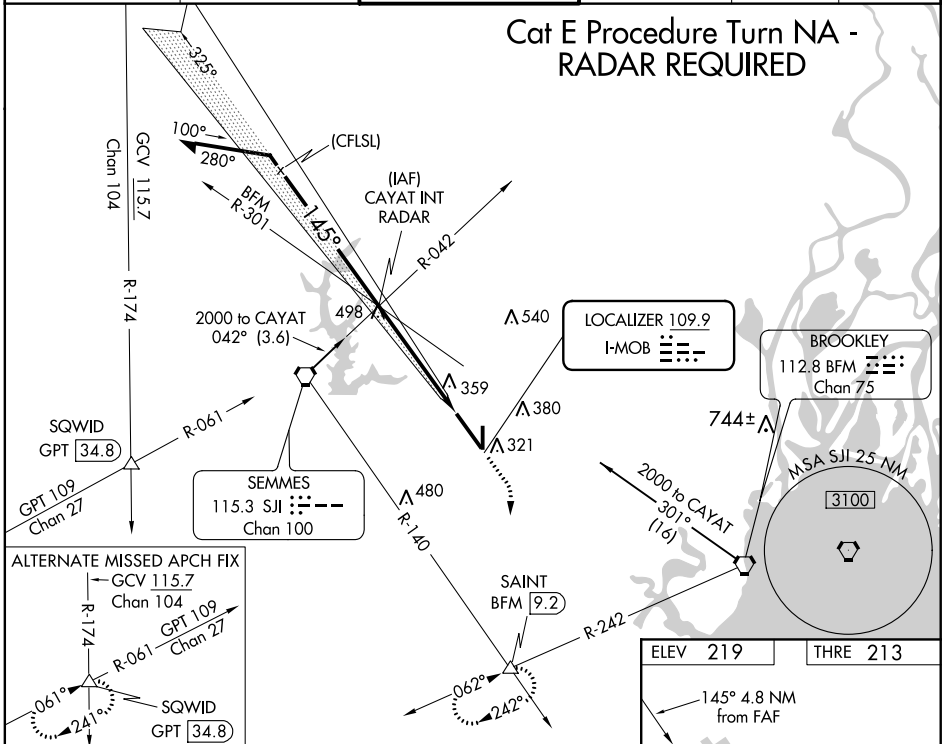
# ILS or LOC RWY 14

MOBILE RGNL (MOB)

**⚠** \*\*RVR 1800 authorized with use of FD or AP or HUD to DA.  
**⚠** For inoperative MALSR, increase S-ILS 14 Cat E visibility to ASR RVR 4000 and S-LOC 14 Cats C/D/E visibility to 1 1/8 mile.

**MALSR** MISSED APPROACH: Climb to 900 then climbing right turn to 2000 on heading 200° and SJI VORTAC R-140 to SAINT INT/BFM 9.2 DME and hold.

ATIS <b>124.75 257.85</b>	MOBILE APP CON * <b>118.5 269.3</b>	MOBILE TOWER * <b>118.3 (CTAF) 239.0</b>	GND CON <b>121.9 348.6</b>	CLNC DEL <b>119.85</b>	UNICOM <b>122.95</b>
------------------------------	--	---	-------------------------------	---------------------------	-------------------------



CATEGORY	A	B	C	D	E
S-ILS 14**	413/24 200 (200-1/2)				
S-LOC 14	700/24	487 (500-1/2)	700/50	487 (500-1)	
CIRCLING	700-1	481 (500-1)	700-1 1/2 481 (500-1 1/2)	780-2 561 (600-2)	NA

SE-4, 07 FEB 2013 to 07 MAR 2013

SE-4, 07 FEB 2013 to 07 MAR 2013