

APP CRS	Rwy Idg	9501
113°	TDZE	3200
	Apt Elev	3206

RNAV (RNP) Z RWY 11

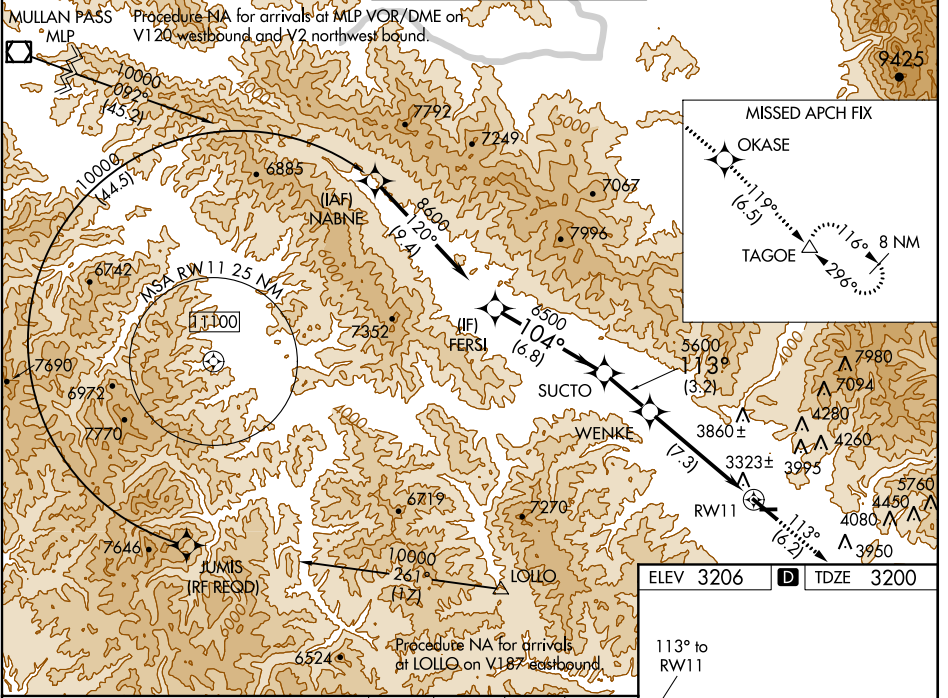
MISSOULA INTL (MSO)

▼ * Missed approach requires minimum climb of 425 feet per NM to 8300.
▲ ** Missed approach requires minimum climb of 350 feet per NM to 8300. If unable see RNAV (GPS) Y RWY 11.
 For uncompensated Baro-VNAV systems, procedure NA below -21°C (-6°F) or above 43°C (109°F). For inoperative MALSR, increase RNP 0.12 all Cats visibility to RVR 6000. For inoperative MALSR, increase RNP 0.30 all Cats visibility to 2½ miles. GPS required.

MALSR

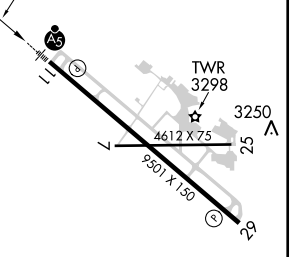
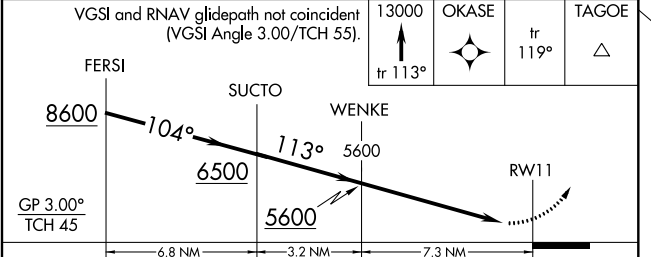
MISSED APPROACH: Climb to 13000 on track 113° to OKASE, and on track 119° to TAGOE and hold, continue climb-in-hold to 13000.

ATIS 126.65	SPOKANE APP CON * 124.9 298.95	MISSOULA TOWER * 118.4 (CTAF) 377.175	GND CON 121.9	UNICOM 122.95
------------------------------	---	--	--------------------------------	--------------------------------



NW-1, 07 FEB 2013 to 07 MAR 2013

NW-1, 07 FEB 2013 to 07 MAR 2013



CATEGORY	A	B	C	D
* RNP 0.12 DA		3518/40	318 (400-¾)	
** RNP 0.30 DA		3880-2	680 (700-2)	

AUTHORIZATION REQUIRED

REIL Rwy 29
 MRL Rwy 7-25
 HIRL Rwy 11-29