

APP CRS 294°	Rwy Idg 9501
	TDZE 3205
	Apt Elev 3205

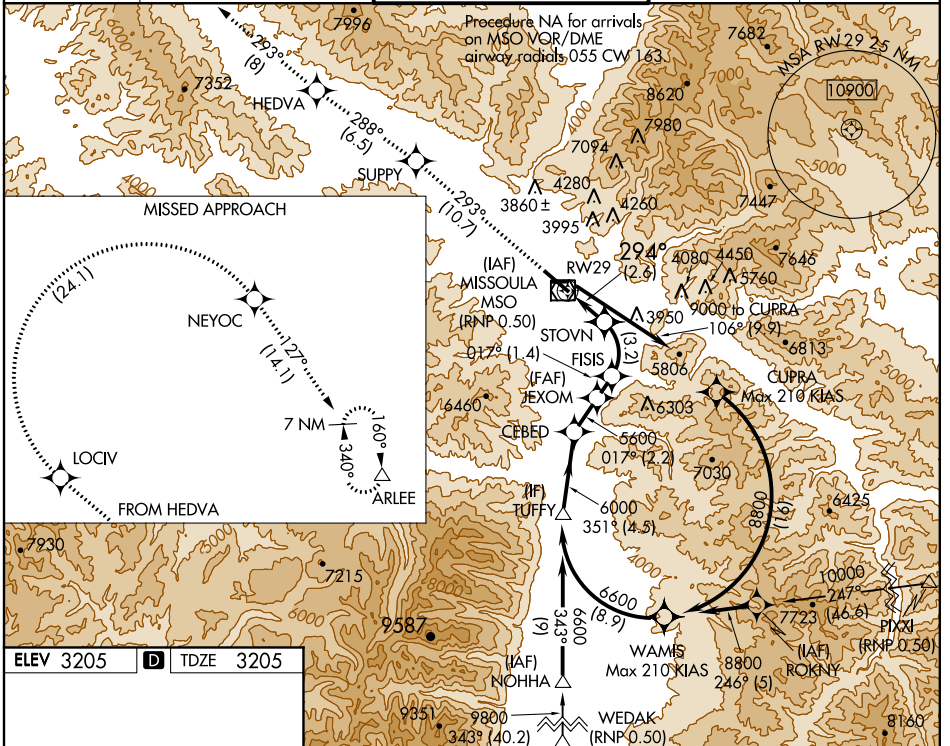
RNAV (RNP) RWY 29

MISSOULA INTL (MISO)

▼ RF and GPS required. When local altimeter setting not received, procedure NA. For uncompensated Baro-VNAV systems, procedure NA below -21°C (-5°F) or above 43°C (109°F).
 * Missed approach requires minimum climb of 21.5 feet per NM to 5000.

MISSED APPROACH: Climb to 11000 via track 293° to SUPPY, and via track 288° to HEDVA, and via track 293° to LOCIV, and via right turn to NEYOC, and via track 127° to ARLEE and hold.

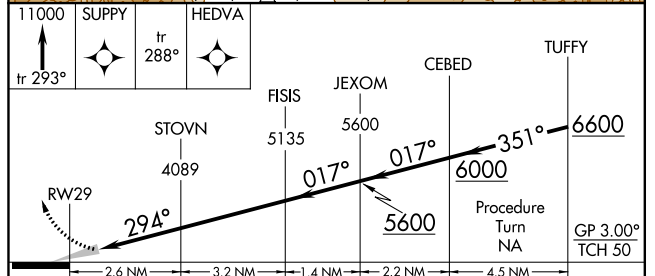
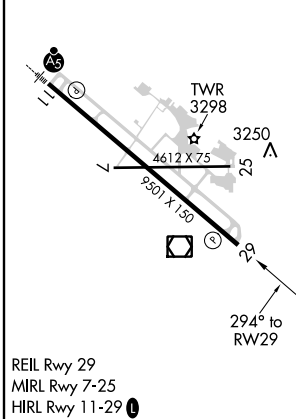
ATIS 126.65	SPOKANE APP CON * 124.9 298.95	MISSOULA TOWER * 118.4 (CTAF) 377.175	GND CON 121.9	UNICOM 122.95
-----------------------	--	---	-------------------------	-------------------------



NW-1, 07 FEB 2013 to 07 MAR 2013

NW-1, 07 FEB 2013 to 07 MAR 2013

ELEV 3205	D	TDZE 3205
-----------	----------	-----------



CATEGORY	A	B	C	D
RNP 0.30 DA*	3523-1 318 (400-1)			
RNP 0.30 DA	3581-1 376 (400-1 1/4)			

AUTHORIZATION REQUIRED