

(MZULA3.MZULA) 11013

MZULA THREE DEPARTURE

SL-266 (FAA)

MISSOULA INTL (MSO)
MISSOULA, MONTANA

TAKE-OFF OBSTACLE NOTES

Rwy 11: Fence beginning 22' from DER, 487' right of centerline, up to 15' AGL/3215' MSL.

TAKE-OFF MINIMUMS

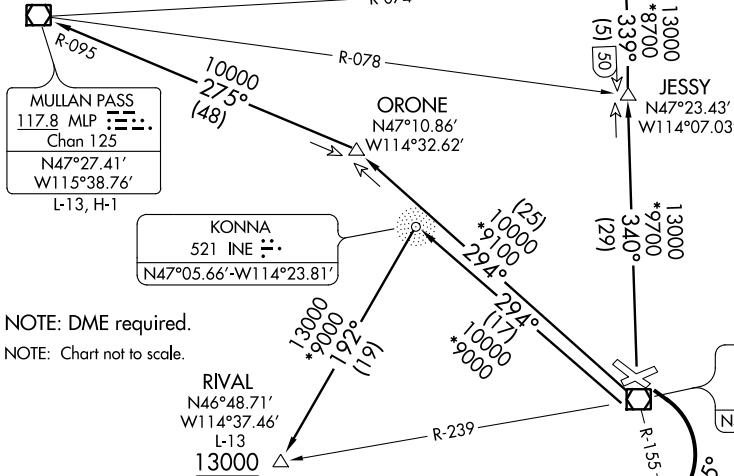
Rwy 7, 25: NA- obstacles.

Rwy 11: Standard with minimum climb of 400' per NM to 11000.

Rwy 29: NA-ATC.

KALISPELL
113.2 FCA
Chan 79
N48°12.85'
W114°10.55'
L-13

ATIS 126.65
GND CON 121.9
MISSOULA TOWER * 118.4 (CTAF) 377.175
SPOKANE DEP CON 124.9 298.95
SALT LAKE CITY CENTER 133.4 285.4



NOTE: DME required.
NOTE: Chart not to scale.

DEPARTURE ROUTE DESCRIPTION

TAKE-OFF RUNWAY 11: Climbing right turn heading 185° to intercept and proceed on MSO R-155 to cross IPPUG at/above 7800. Thence on transition or assigned route.

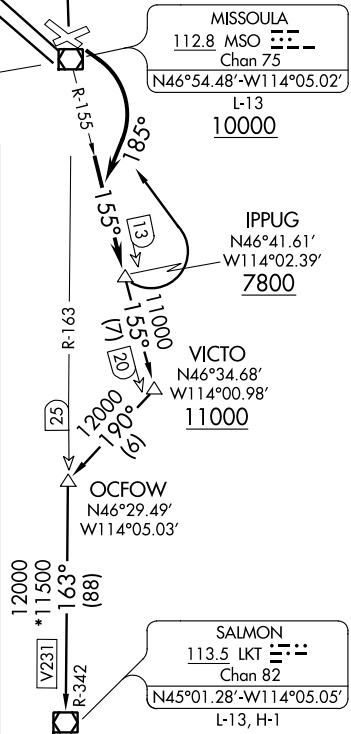
KALISPELL TRANSITION (MZULA3.FCA): From over IPPUG left turn via MSO R-155 to MSO VOR/DME, then via MSO R-340 to JESSY, then via MSO R-340 and FCA R-159 to FCA VOR/DME.

MISSOULA TRANSITION (MZULA3.MSO): From over IPPUG left turn via MSO R-155 to MSO VOR/DME.

MULLAN PASS TRANSITION (MZULA3.MLP): From over IPPUG left turn via MSO R-155 to MSO VOR/DME, then via MSO R-294 to ORONE, then via MLP R-095 to MLP VOR/DME.

RIVAL TRANSITION (MZULA3.RIVAL): From over IPPUG left turn via MSO R-155 to MSO VOR/DME, then via MSO R-294 to INE NDB, then via INE 192° bearing to RIVAL.

SALMON TRANSITION (MZULA3.LKT): From over IPPUG via MSO R-155 to VICTO, then via heading 190° to OCFOW, then via MSO R-163 and LKT R-342 to LKT VOR/DME.



NW-1, 07 FEB 2013 to 07 MAR 2013

NW-1, 07 FEB 2013 to 07 MAR 2013

MZULA THREE DEPARTURE

(MZULA3.MZULA) 11013

MISSOULA, MONTANA
MISSOULA INTL (MSO)