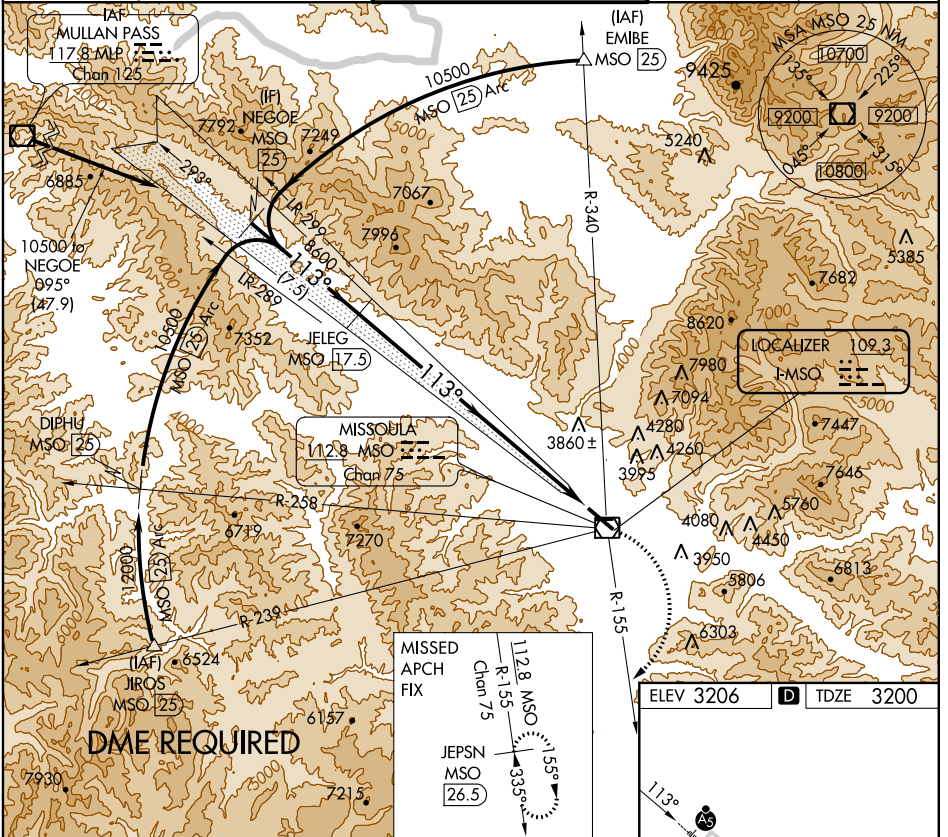


LOC I-MSO 109.3	APP CRS 113°	Rwy Idg TDZE Apt Elev 9501 3200 3206
---------------------------	------------------------	--

ILS Z RWY 11

MISSOULA INTL (MSO)

	Missed approach requires minimum climb of 410 feet per NM to 9800, if unable to comply with climb gradient, use ILS Y Rwy 11.	MALSR 	MISSED APPROACH: Climbing right turn to 10300 on MSO VOR/DME R-155 to JEPSN/MSO VOR/DME 26.5 DME and hold.				
	<table border="1"> <tr> <td>ATIS 126.65</td> <td>SPOKANE APP CON * 124.9 298.95</td> <td>MISSOULA TOWER * 118.4 (CTAF) 377.175</td> <td>GND CON 121.9</td> <td>UNICOM 122.95</td> </tr> </table>			ATIS 126.65	SPOKANE APP CON * 124.9 298.95	MISSOULA TOWER * 118.4 (CTAF) 377.175	GND CON 121.9
ATIS 126.65	SPOKANE APP CON * 124.9 298.95	MISSOULA TOWER * 118.4 (CTAF) 377.175	GND CON 121.9	UNICOM 122.95			



NW-1, 07 FEB 2013 to 07 MAR 2013

NW-1, 07 FEB 2013 to 07 MAR 2013

NEGEO MSO 25	VGS1 and ILS glidepath not coincident (VGS1 Angle 3.00/TCH 55).		10300	JEPSN MSO 26.5
10500	JELEP MSO 17.5	8600	MSO R-155	TWR 3298
Procedure Turn NA	113°	8600	MSO R-155	4612 X 75
GS 3.00° TCH 45	7.5 NM	16.1 NM		3250
CATEGORY	A	B	C	D
S-ILS 11	3411/24		211 (300-1/2)	

REIL Rwy 29
MIRL Rwy 7-25
HIRL Rwy 11-29