

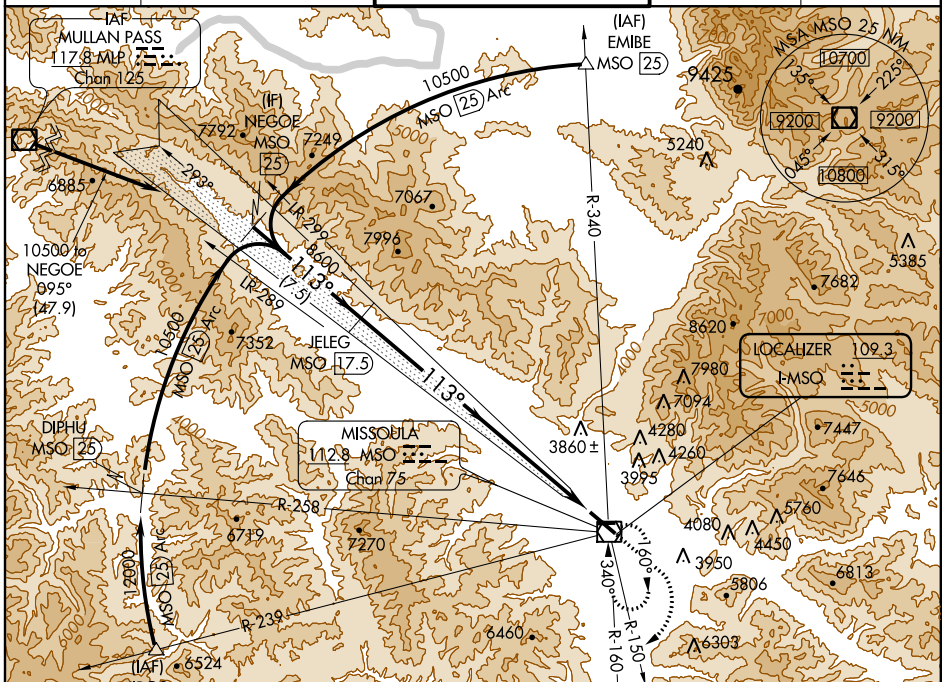
LOC I-MSO <b>109.3</b>	APP CRS <b>113°</b>	Rwy Idg TDZE Apt Elev	<b>9501</b> <b>3200</b> <b>3206</b>
---------------------------	------------------------	-----------------------------	---

# ILS Y RWY 11

MISSOULA INTL (MISO)

NA Inoperative table does not apply.	MALSR	MISSED APPROACH: Climb to 6200 then climbing right turn to 8500 on MSO VOR/DME R-150 then climbing left turn to 9100 direct MSO VOR/DME and hold.	

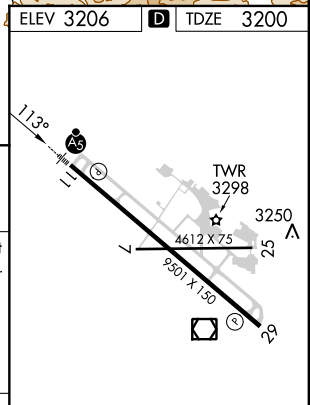
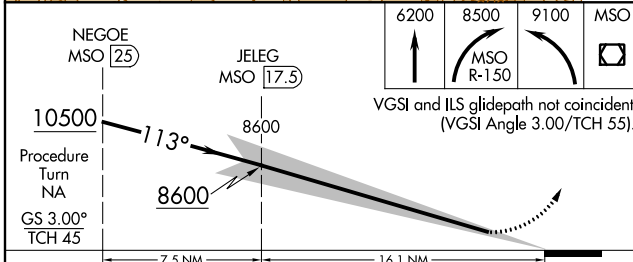
ATIS <b>126.65</b>	SPOKANE APP CON * <b>124.9 298.95</b>	MISSOULA TOWER * <b>118.4 (CTAF) 377.175</b>	GND CON <b>121.9</b>	UNICOM <b>122.95</b>
-----------------------	--	---	-------------------------	-------------------------



NW-1, 07 FEB 2013 to 07 MAR 2013

NW-1, 07 FEB 2013 to 07 MAR 2013

ELEV 3206	TDZE 3200
-----------	-----------



CATEGORY	A	B	C	D
S-ILS 11		5022-7	1822 (1900-7)	

REIL Rwy 29  
MIRL Rwy 7-25  
HIRL Rwy 11-29