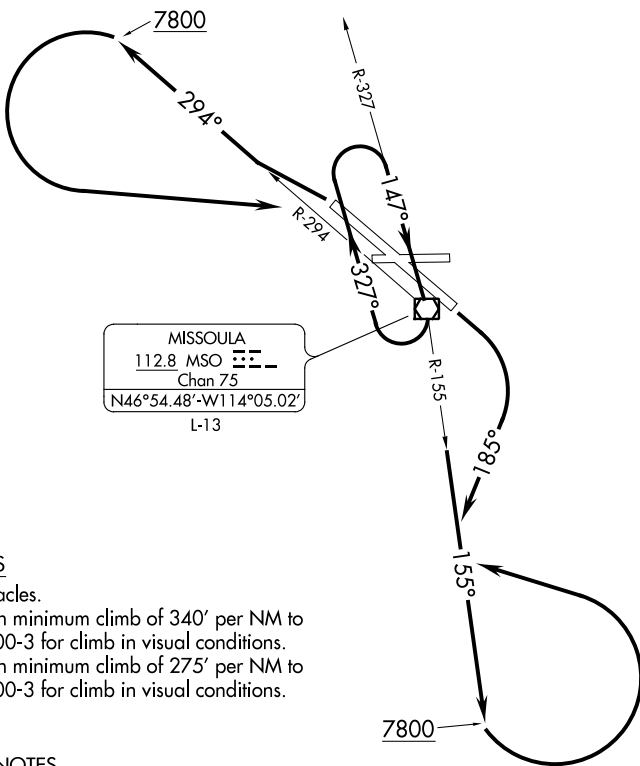


ATIS 126.65
GND CON
121.9
MISSOULA TOWER *
118.4 (CTAF) 377.175
SPOKANE DEP CON
124.9 298.95
SALT LAKE CITY CENTER
133.4 285.4



TAKE-OFF MINIMUMS

- Rwy 7, 25: NA- Obstacles.
- Rwy 11: Standard with minimum climb of 340' per NM to 7800, or 2700-3 for climb in visual conditions.
- Rwy 29: Standard with minimum climb of 275' per NM to 7800, or 2700-3 for climb in visual conditions.

TAKE-OFF OBSTACLE NOTES

Rwy 11: Fence beginning 22' from DER, 487' right of centerline, up to 15' AGL/3215' MSL.

NOTE: Chart not to scale.

DEPARTURE ROUTE DESCRIPTION

TAKE-OFF RUNWAY 11: Climbing right turn heading 185° to intercept MSO R-155, southeast bound to 7800, thence. . . .
or, climb in visual conditions to cross MSO VOR/DME southeast bound at or above 5800, continue climb to 7800 via MSO VOR/DME R-155, thence. . . .

TAKE-OFF RUNWAY 29: Climb via MSO R-294 to 7800, then climbing left turn via MSO R-294 to MSO VOR/DME, climb in MSO VOR/DME holding pattern to MEA/MCA for route of flight or, climb in visual conditions to cross MSO VOR/DME southeast bound at or above 5800, continue climb to 7800 via MSO VOR/DME R-155, thence. . . .

. . . climbing left turn via MSO VOR/DME R-155 to MSO VOR/DME, climb in MSO VOR/DME holding pattern to MEA/MCA for route of flight.

NW-1, 07 FEB 2013 to 07 MAR 2013

NW-1, 07 FEB 2013 to 07 MAR 2013