

(DIDLY3.DIDLY) 11013

# DIDLY THREE DEPARTURE

SL-266 (FAA)

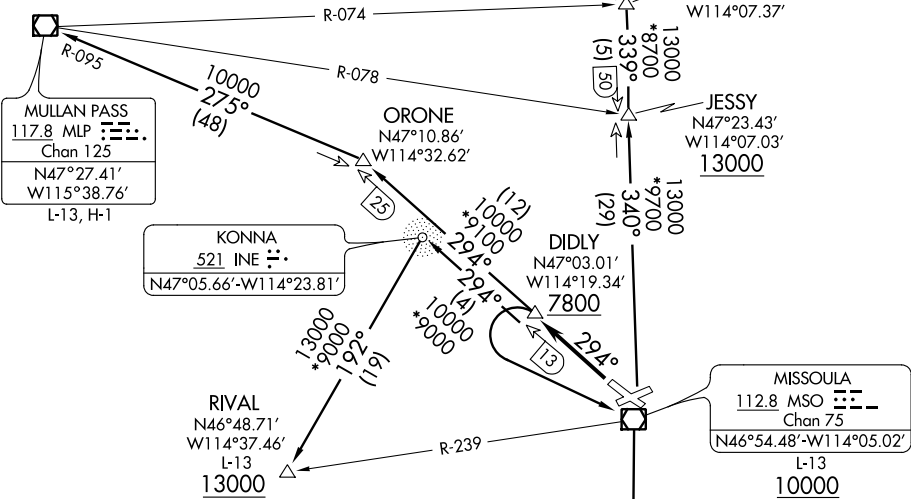
MISSOULA INTL (MSO)  
MISSOULA, MONTANA

### TAKE-OFF MINIMUMS

Rwy 7, 25: NA-obstacles.

Rwy 11: NA-ATC.

Rwy 29: Standard with minimum climb of 400' per NM to 7800.



ATIS 126.65  
GND CON 121.9  
MISSOULA TOWER \* 118.4 (CTAF) 377.175  
SPOKANE DEP CON 124.9 298.95  
SALT LAKE CITY CENTER 133.4 285.4

### DEPARTURE ROUTE DESCRIPTION

**TAKE-OFF RUNWAY 29:** Climb on MSO R-294 to cross DIDLY at/above 7800. Thence on transition or assigned route.

**KALISPELL TRANSITION (DIDLY3.FCA):** From over DIDLY INT left turn via MSO R-294 to MSO VOR/DME, then via MSO R-340 to JESSY, then via MSO R-340 and FCA R-159 to FCA VOR/DME.

**MISSOULA TRANSITION (DIDLY3.MSO):** From over DIDLY INT left turn via MSO R-294 to MSO VOR/DME.

**MULLAN PASS TRANSITION (DIDLY3.MLP):** From over DIDLY INT via MSO R-294 to ORONE, then via MLP R-095 to MLP VOR/DME.

**RIVAL TRANSITION (DIDLY3.RIVAL):** From over DIDLY INT via MSO R-294 to INE NDB, then via INE 192° bearing to RIVAL INT.

**SALMON TRANSITION (DIDLY3.LKT):** From over DIDLY INT left turn via MSO R-294 to MSO VOR/DME, then via MSO R-163 and LKT R-342 to LKT VOR/DME.

NOTE: DME required.  
NOTE: Chart not to scale.

# DIDLY THREE DEPARTURE

(DIDLY3.DIDLY) 11013

MISSOULA, MONTANA  
MISSOULA INTL (MSO)

NW-1, 07 FEB 2013 to 07 MAR 2013

NW-1, 07 FEB 2013 to 07 MAR 2013