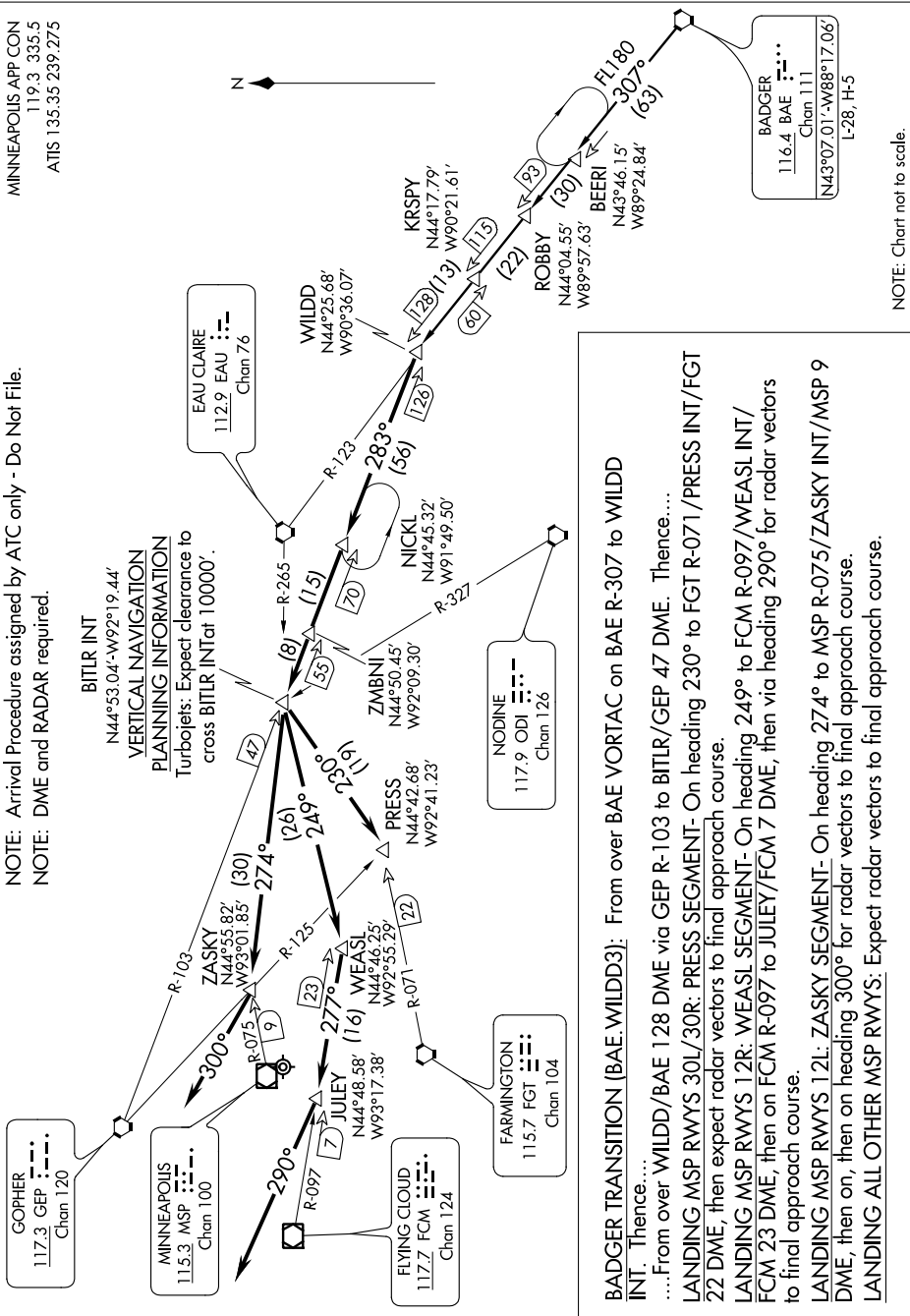


WILDD THREE ARRIVAL

NC-1, 07 FEB 2013 to 07 MAR 2013

NOTE: Arrival Procedure assigned by ATC only - Do Not File.
NOTE: DME and RADAR required.

MINNEAPOLIS APP CON
119.3 335.5
ATIS 135.35 239.275



NOTE: Chart not to scale.

BADGER TRANSITION [BAE.WILDD3]: From over BAE VORTAC on BAE R-307 to WILDD INT. Thence....

....From over WILDD/BAE 128 DME via GEP R-103 to BITLIR/GEP 47 DME. Thence....

LANDING MSP RWYS 30L/30R: PRESS SEGMENT- On heading 230° to FGT R-071/PRESS INT/FGT 22 DME, then expect radar vectors to final approach course.

LANDING MSP RWYS 12R: WEASL SEGMENT- On heading 249° to FCM R-097/WEASL INT/FCM 23 DME, then on FCM R-097 to JULY/FCM 7 DME, then via heading 290° for radar vectors to final approach course.

LANDING MSP RWYS 12L: ZASKY SEGMENT- On heading 274° to MSP R-075/ZASKY INT/MSP 9 DME, then on, then on heading 300° for radar vectors to final approach course.

LANDING ALL OTHER MSP RWYS: Expect radar vectors to final approach course.

NC-1, 07 FEB 2013 to 07 MAR 2013