

# SCHEP FIVE DEPARTURE

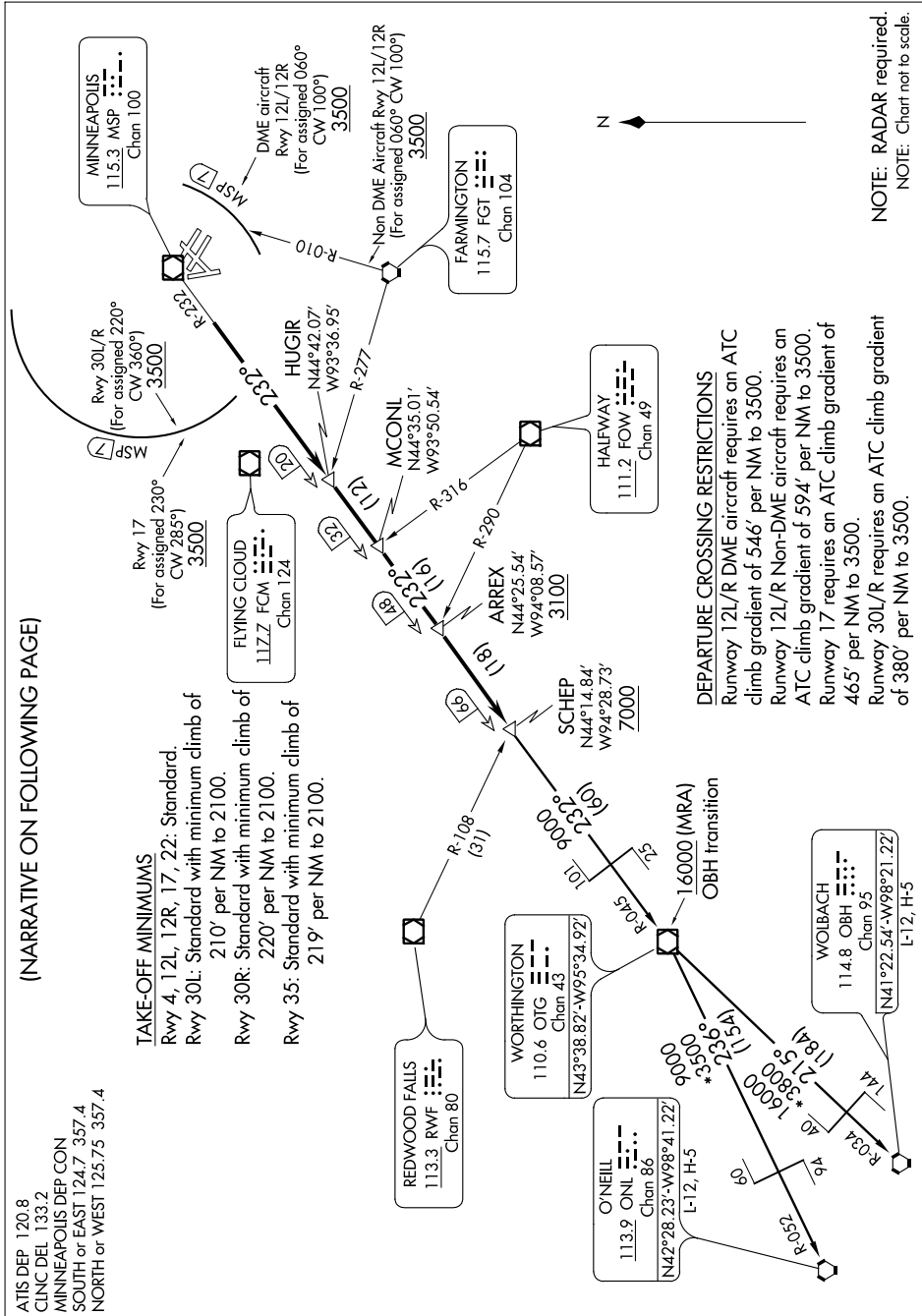
NC-1, 07 FEB 2013 to 07 MAR 2013

## (NARRATIVE ON FOLLOWING PAGE)

ATIS DEP 120.8  
CLNC DEL 133.2  
MINNEAPOLIS DEP CON  
SOUTH or EAST 124.7 357.4  
NORTH or WEST 125.75 357.4

### TAKE-OFF MINIMUMS

- Rwy 4, 12L, 12R, 17, 22: Standard.
- Rwy 30L: Standard with minimum climb of 210' per NM to 2100.
- Rwy 30R: Standard with minimum climb of 220' per NM to 2100.
- Rwy 35: Standard with minimum climb of 219' per NM to 2100.



**DEPARTURE CROSSING RESTRICTIONS**  
 Runway 12L/R DME aircraft requires an ATC climb gradient of 546' per NM to 3500.  
 Runway 12L/R Non-DME aircraft requires an ATC climb gradient of 594' per NM to 3500.  
 Runway 17 requires an ATC climb gradient of 465' per NM to 3500.  
 Runway 30L/R requires an ATC climb gradient of 380' per NM to 3500.

NOTE: RADAR required.  
 NOTE: Chart not to scale.

NC-1, 07 FEB 2013 to 07 MAR 2013