

RNAV (GPS) Z RWY 35

MINNEAPOLIS-ST PAUL INTL/WOLD-CHAMBERLAIN (MSP)

WAAS CH 90128 W35A	APP CRS 348°	Rwy Idg TDZE Apt Elev	8000 834 841
--	------------------------	-----------------------------	---

▼ For inoperative ALSF increase LPV visibility to RVR 4000.
▲ Baro-VNAV NA below -13°C (8°F).
 DME/DME RNP-0.3 NA

ALSF-2

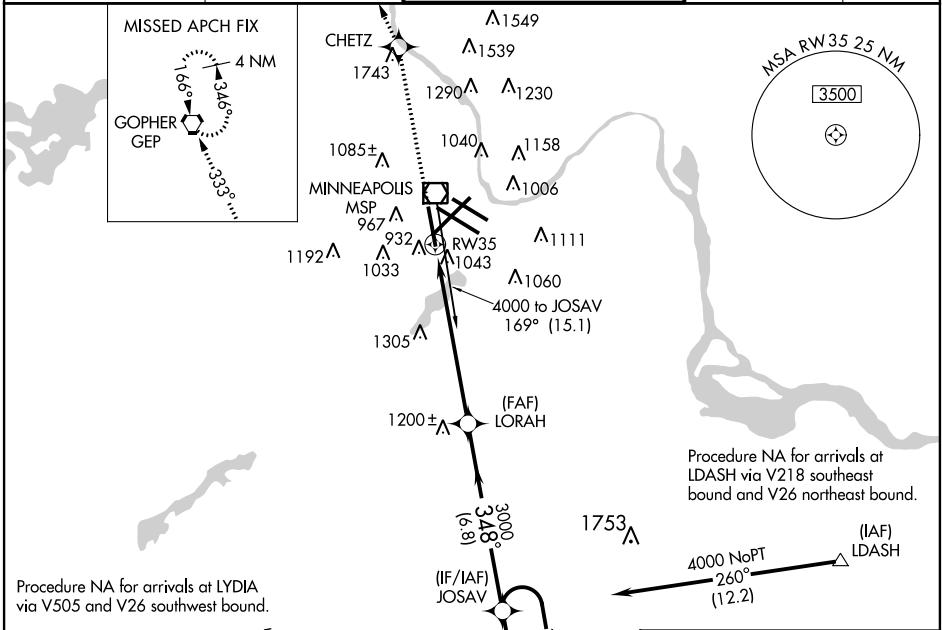
MISSED APPROACH: Climb to 5000 direct CHETZ and via 333° track to GOPHER VORTAC and hold, continue climb-in-hold to 5000.

ATIS ARR 135.35 239.275 DEP 120.8	MINNEAPOLIS APP CON 119.3 335.5
---	---

MINNEAPOLIS TOWER 123.95 273.55 (12L-30R) 126.7 273.55 (12R-30L, 4-22) 123.675 273.55 (17-35)

GND CON N 121.8 348.6 S 121.9 348.6 W 127.925

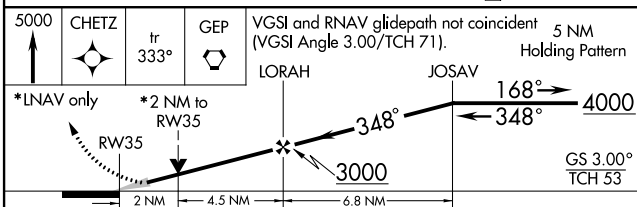
CLNC DEL 133.2



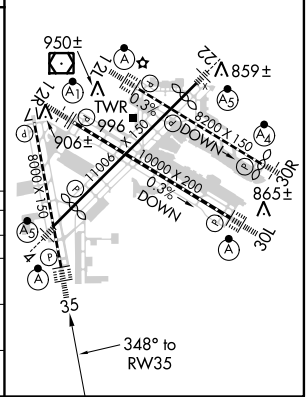
Procedure NA for arrivals at LYDIA via V505 and V26 southwest bound.
 (IAF) LYDIA 4000 NoPT 077° (13)
 Procedure NA for arrivals at PEPPR via V13-411 southbound.
 (IAF) PEPPR 4000 NoPT 002° (16)
 (IF/IAF) JOSAV 3000 348° (6.8)
 (IAF) LORAH 1200± (FAF) LORAH
 4000 to JOSAV 169° (15.1)
 1753△

ELEV 841	D TDZE 834
----------	-------------------

HIRL all Rwys
 REIL Rwys 17 and 30R
 TDZ/CL Rwys 12L, 12R, 30L, and 35



CATEGORY	A	B	C	D
LPV DA	1084/24		250 (300-½)	
LNAV/VNAV DA	1341/60		507 (500-1¼)	
LNAV MDA	1540/24	706 (700-½)	1540-1½ 706 (700-1½)	1540-1¾ 706 (700-1¾)
CIRCLING	1540-1	699 (700-1)	1540-2 699 (700-2)	1540-2¼ 699 (700-2¼)



NC-1, 07 FEB 2013 to 07 MAR 2013

NC-1, 07 FEB 2013 to 07 MAR 2013